

Henri Cartier-Bresson: The Early Work

Peter Galassi



The Museum of Modern Art, New York

Distributed by New York Graphic Society Books/Little, Brown and Company, Boston

USP-FAU
779
C248G

MONOGRAFIAS
HENRI CARTIER-BRESSON : THE EARLY WORK

00027412



This book and the exhibition it accompanies have been made possible by grants from Champagne Taittinger, as part of its program in support of the arts, and from the International Herald Tribune, in celebration of its 100th Anniversary.

Schedule of the exhibition:

The Museum of Modern Art, New York
September 10–November 29, 1987

The Detroit Institute of Arts
December 15, 1987–February 7, 1988

The Art Institute of Chicago
February 27–April 16, 1988

The Museum of Photographic Arts, San Diego
May 10–June 26, 1988

Danforth Museum of Art, Framingham, Massachusetts
September 25–November 28, 1988

The Museum of Fine Arts, Houston
December 17, 1988–February 26, 1989

National Gallery of Canada, Ottawa
March 31–May 28, 1989

Copyright © 1987 by The Museum of Modern Art, New York
All rights reserved

Library of Congress Catalogue Card Number 87-61124

Clothbound ISBN 0-87070-261-0

Paperbound ISBN 0-87070-262-9

Edited by James Leggio

Designed by Antony Drobinski, Emsworth Studios, New York

Production by Daniel Frank

Half-tone photography for plates by Robert J. Hennessey

Type set by Concept Typographic Services, New York

Printed by Franklin Graphics, Providence, Rhode Island

Bound by Sendor Bindery, New York

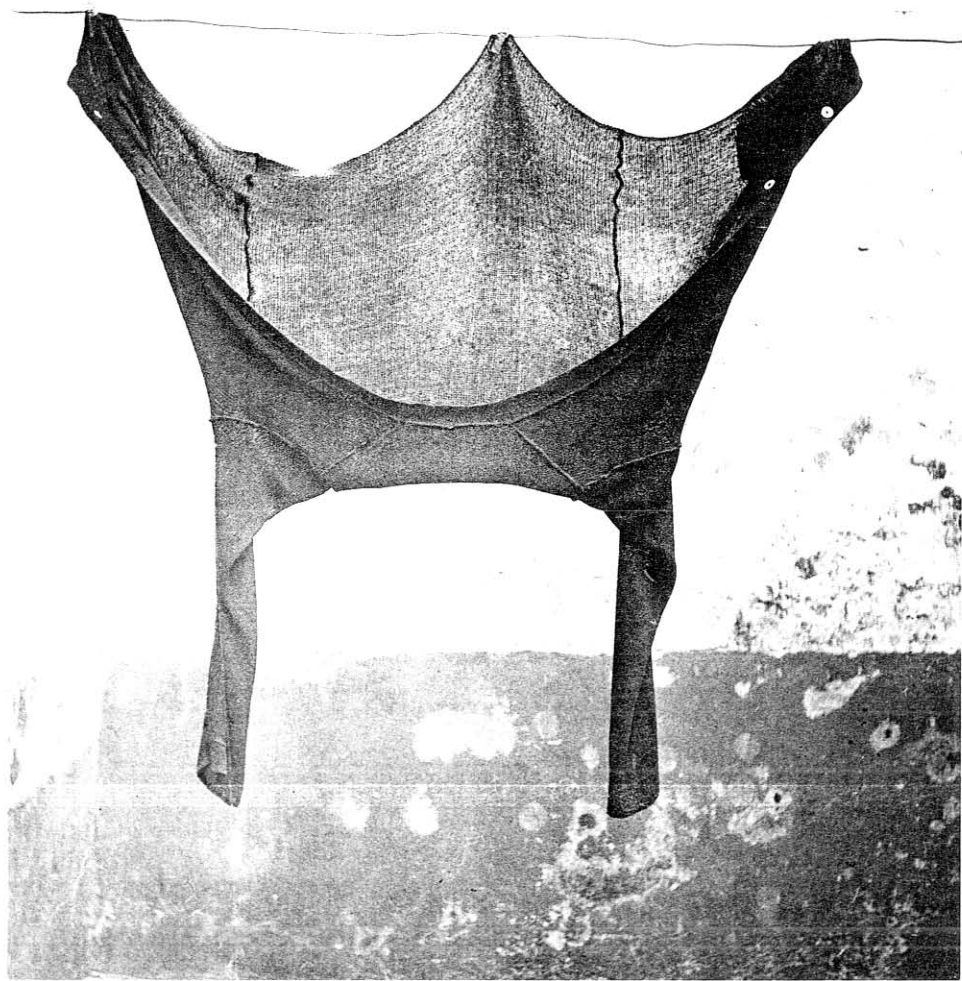
In all but a few cases, the half-tone negatives for the plates in this book were made directly from the original prints. Copy photographs used for the remainder of the plates and for illustrations in the essay have been provided, in the majority of cases, by the owners or custodians of the works, indicated in the captions. The following list applies to photographs for which a separate acknowledgment is due: Cinémathèque française, Paris, fig. 13; Pictorial Service, Paris, courtesy Henri Cartier-Bresson, figs. 7, 11, 12; Robert D. Rubic, New York, fig. 26; E. V. Thaw & Co., Inc., New York, fig. 28.

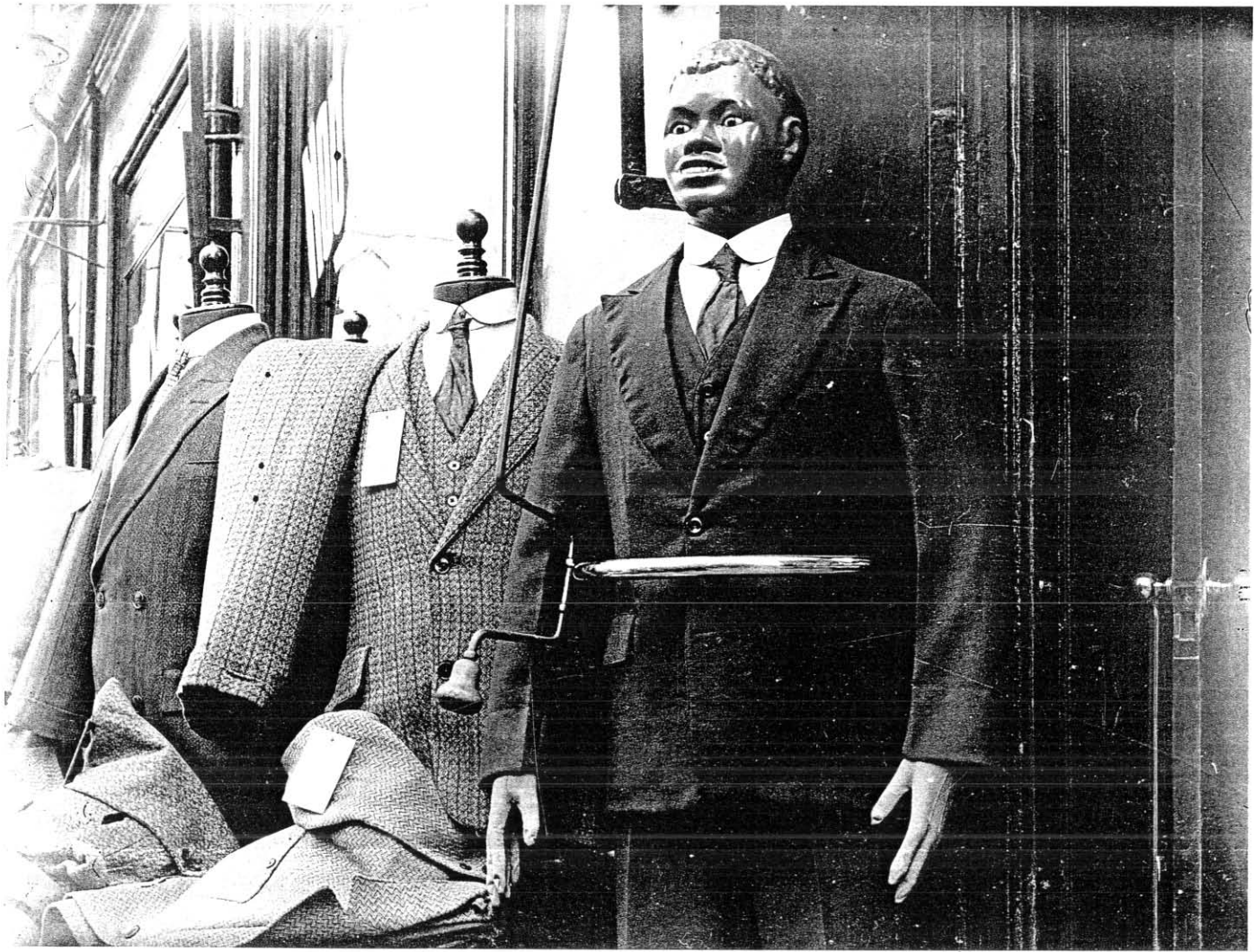
Distributed outside the United States and Canada by
Thames and Hudson Ltd., London

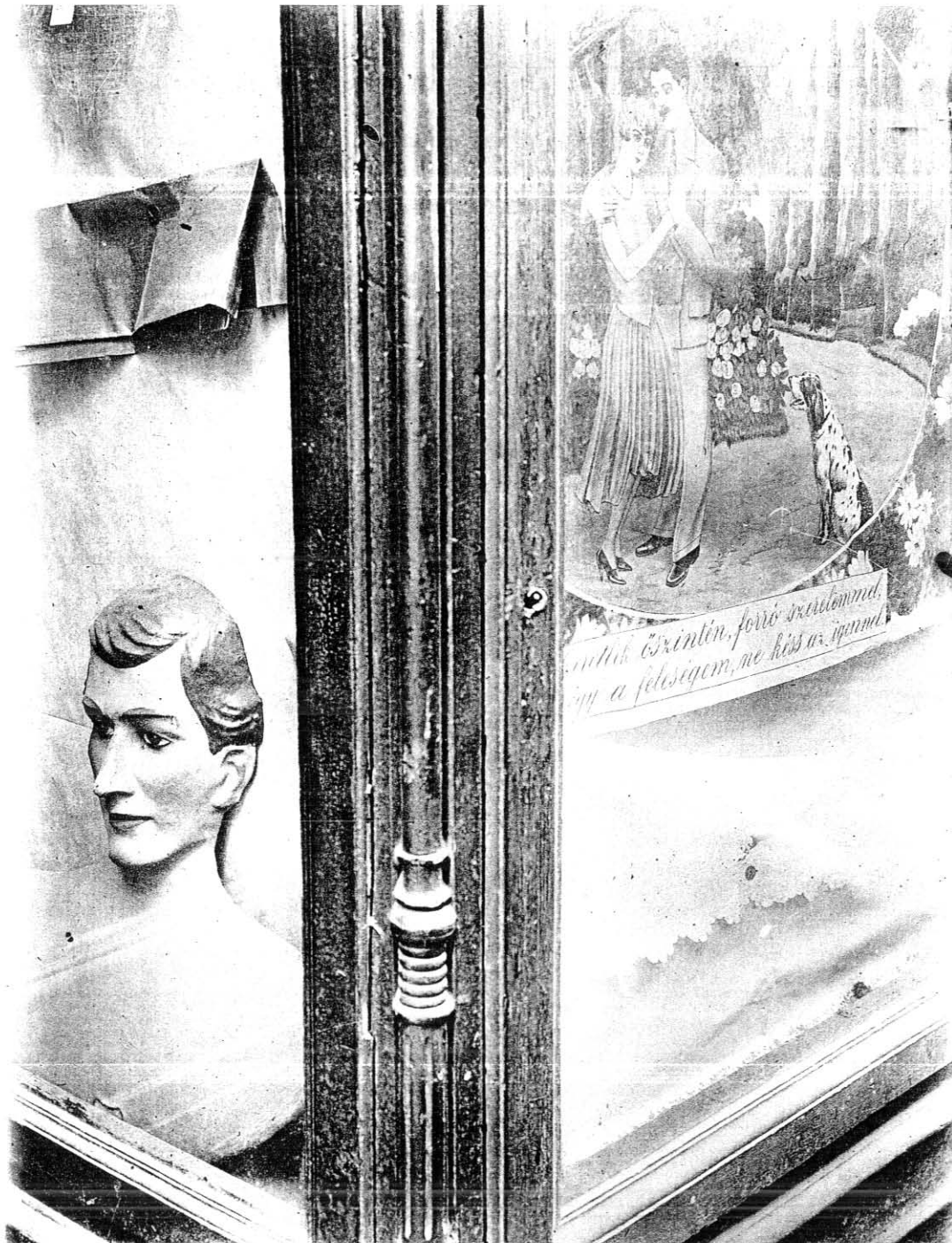
The Museum of Modern Art
11 West 53 Street
New York, New York 10019

Printed in the United States of America

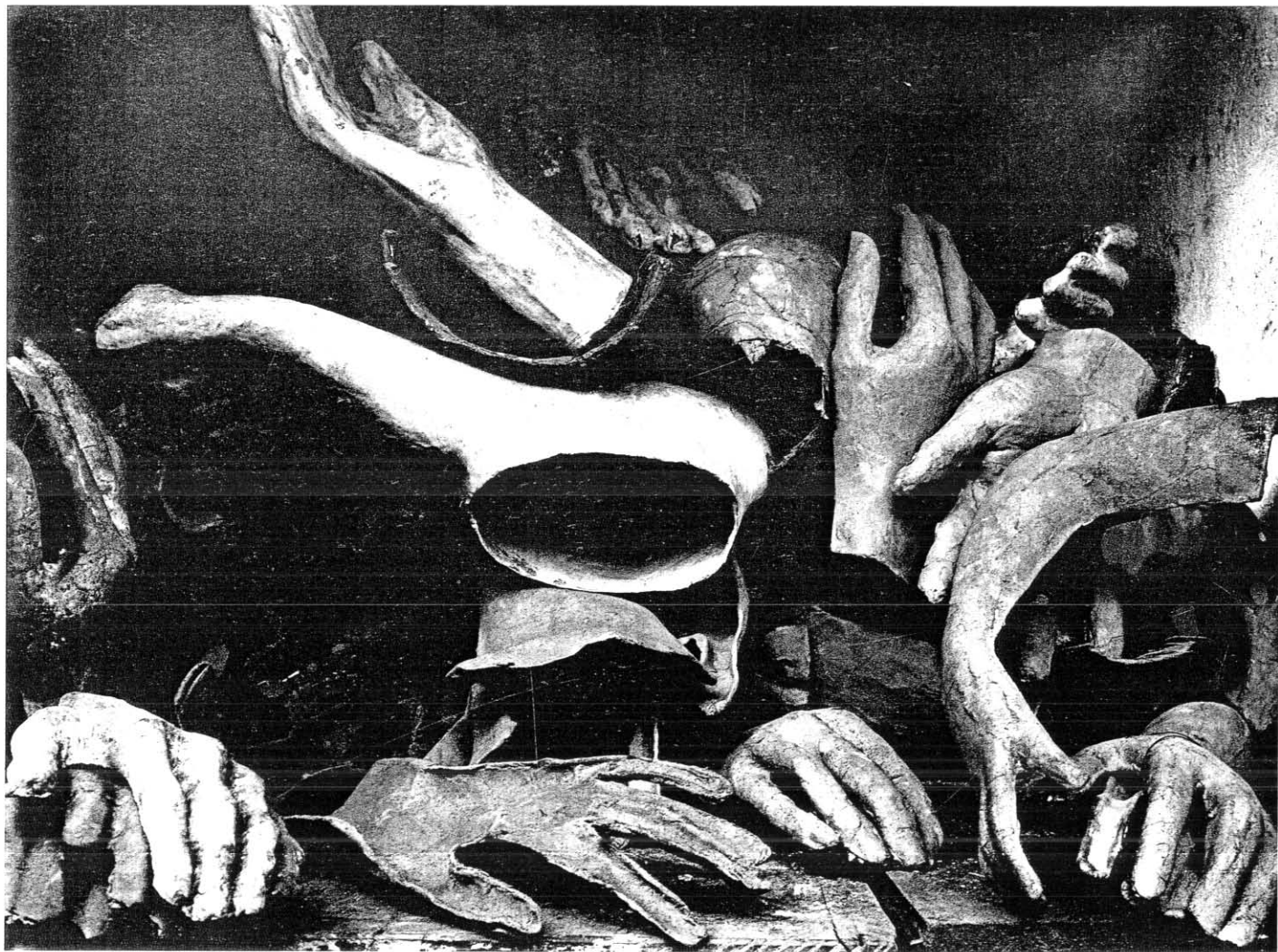
Frontispiece: *Italy*, 1932







Nullus est in foris, foris est in domo,
in a felisqem, ne his as ipum.

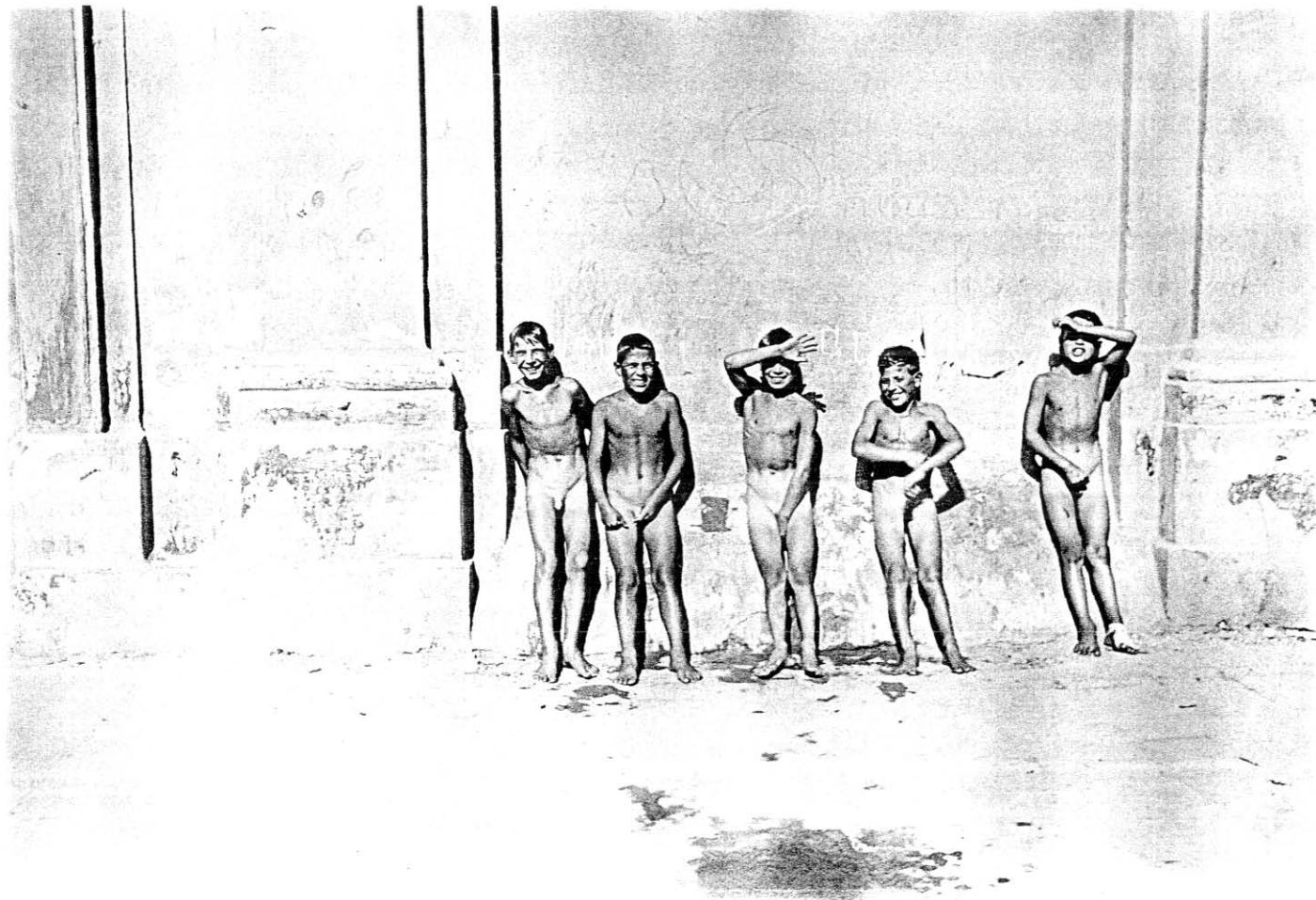








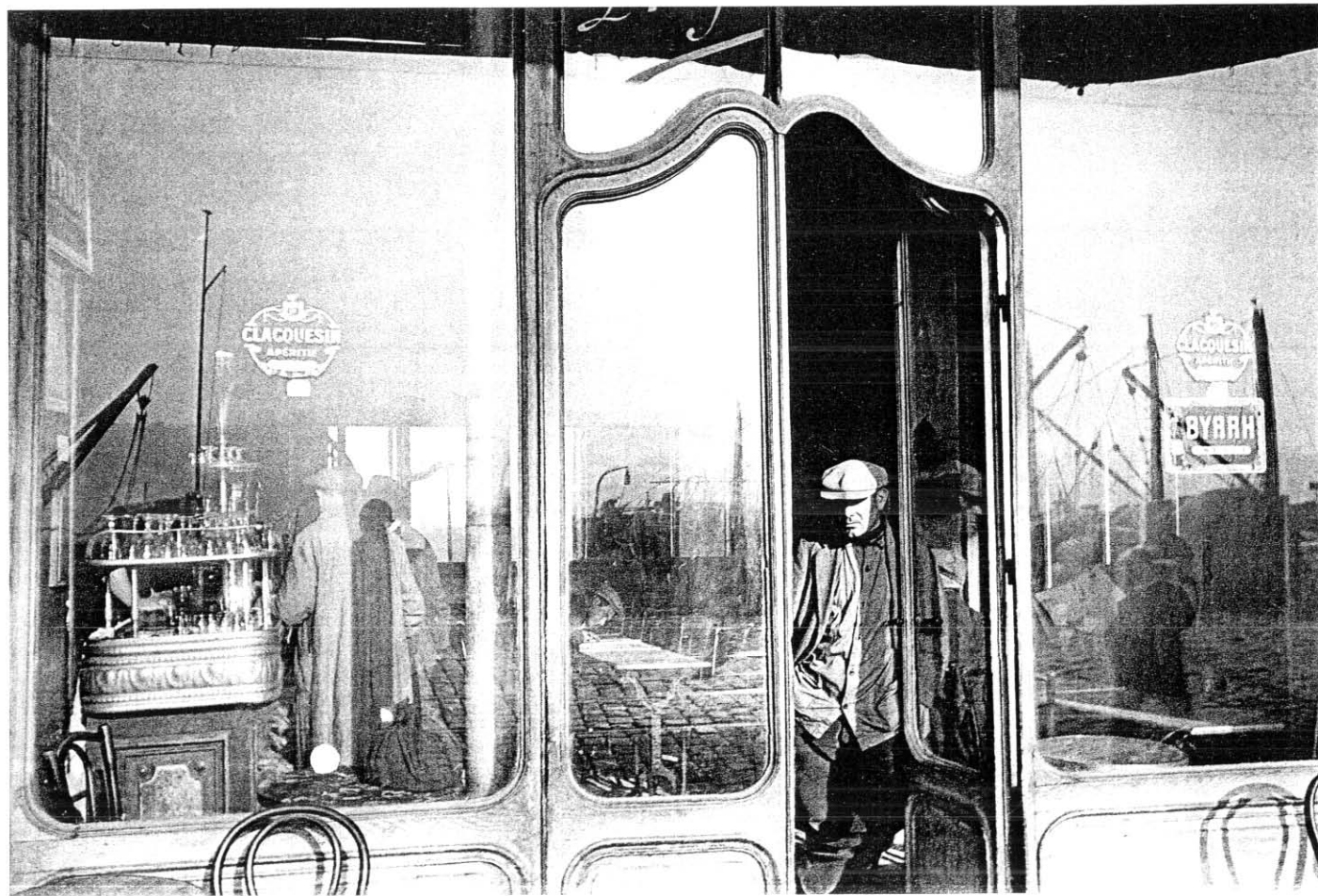
















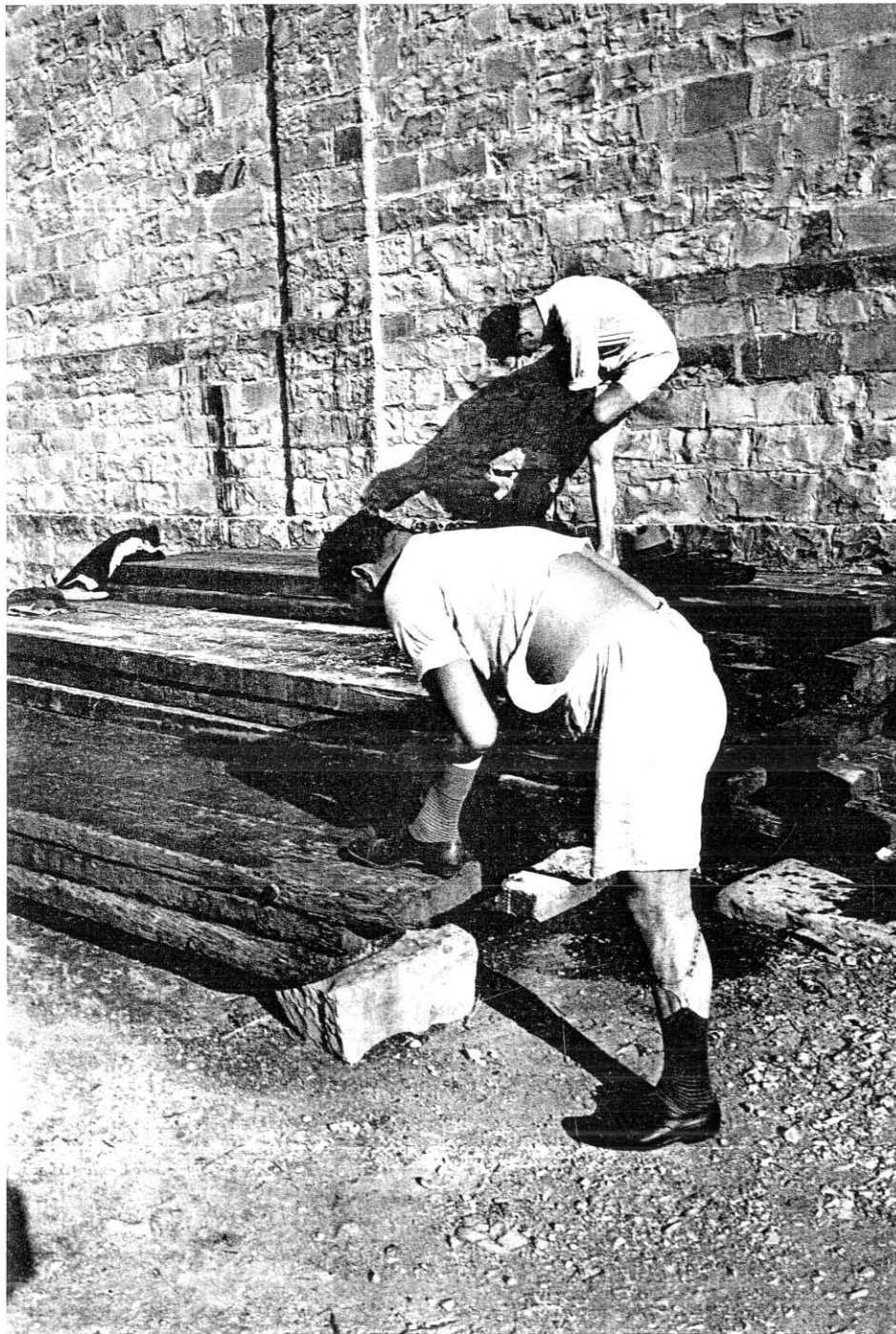


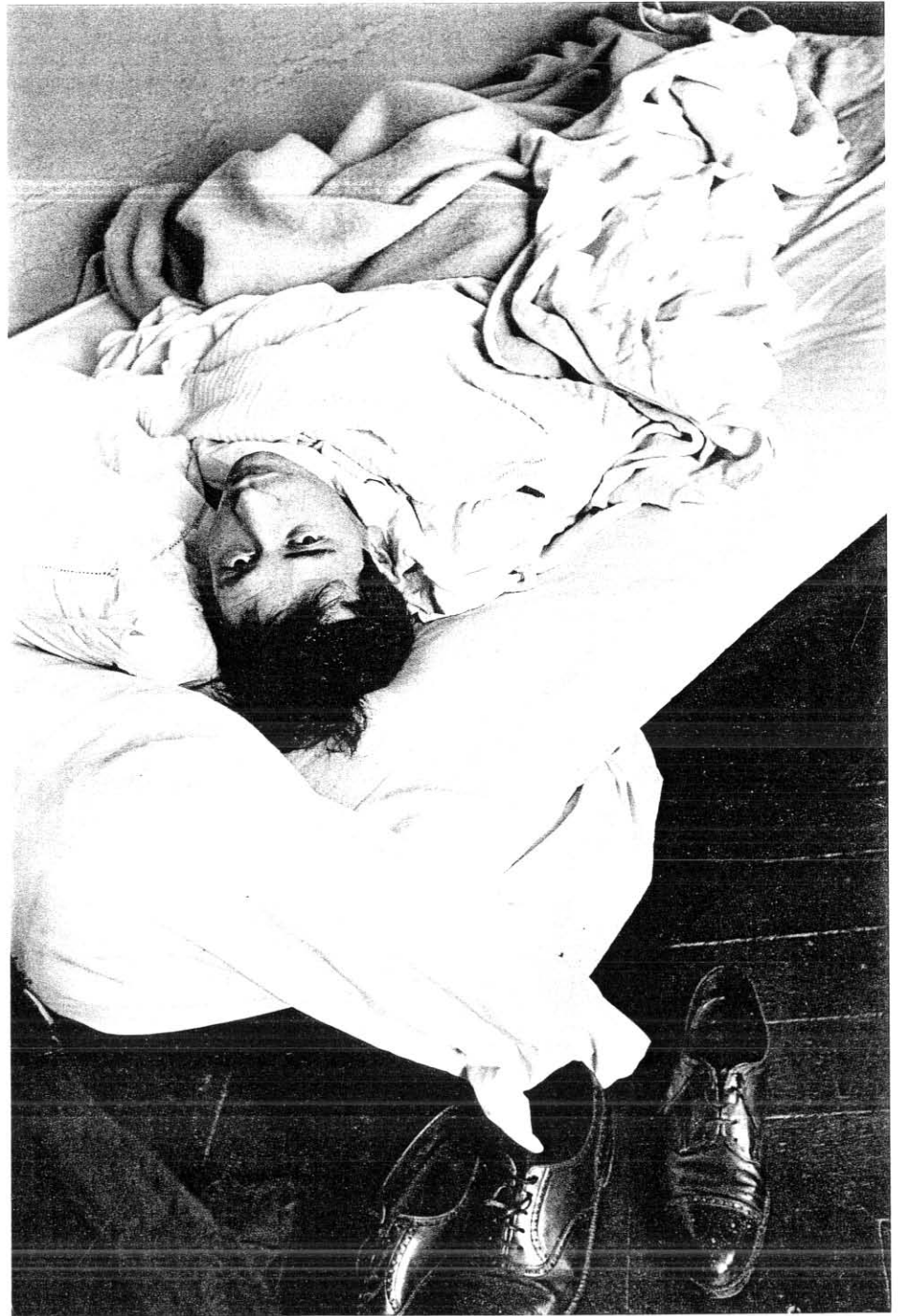






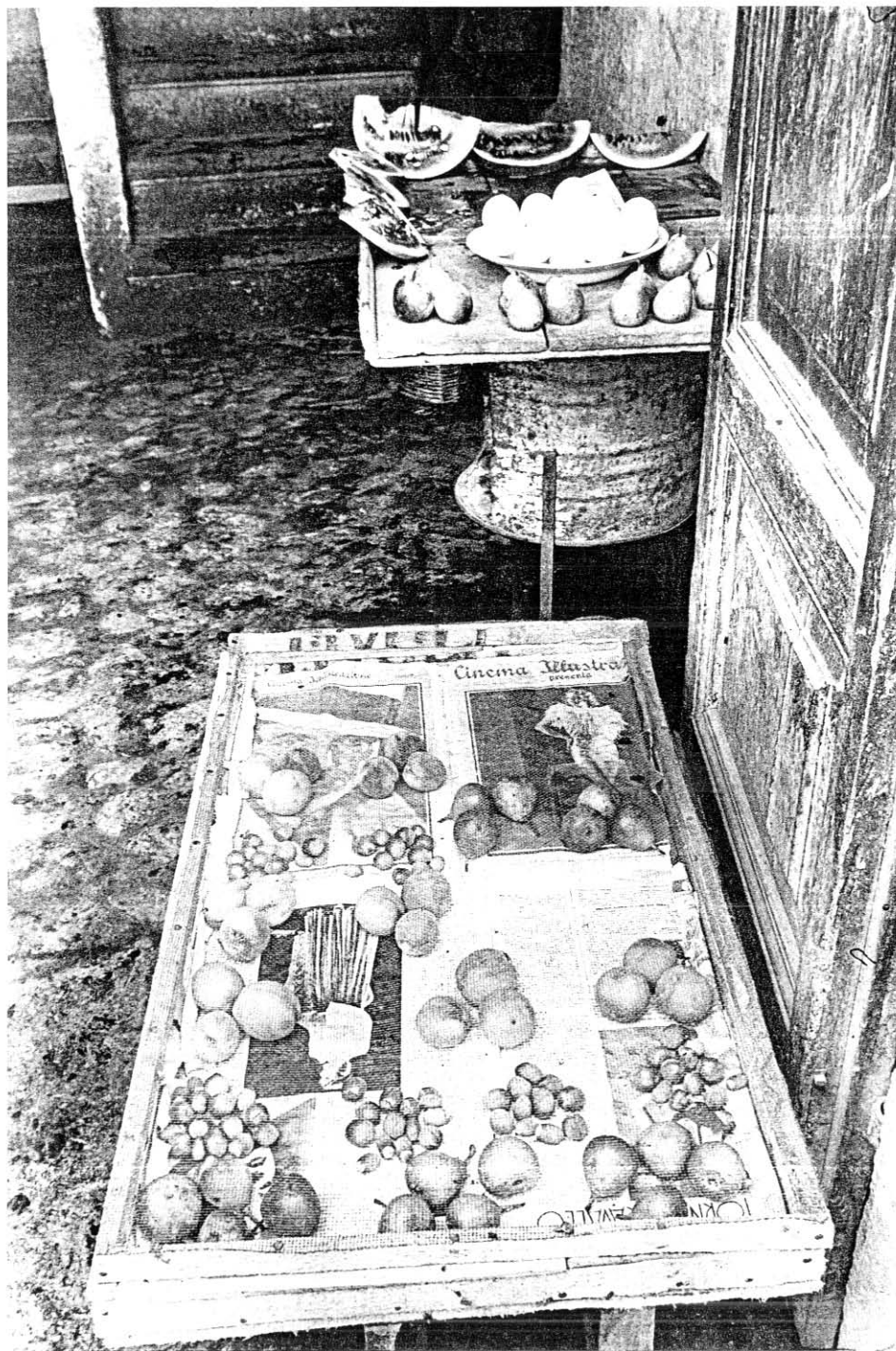






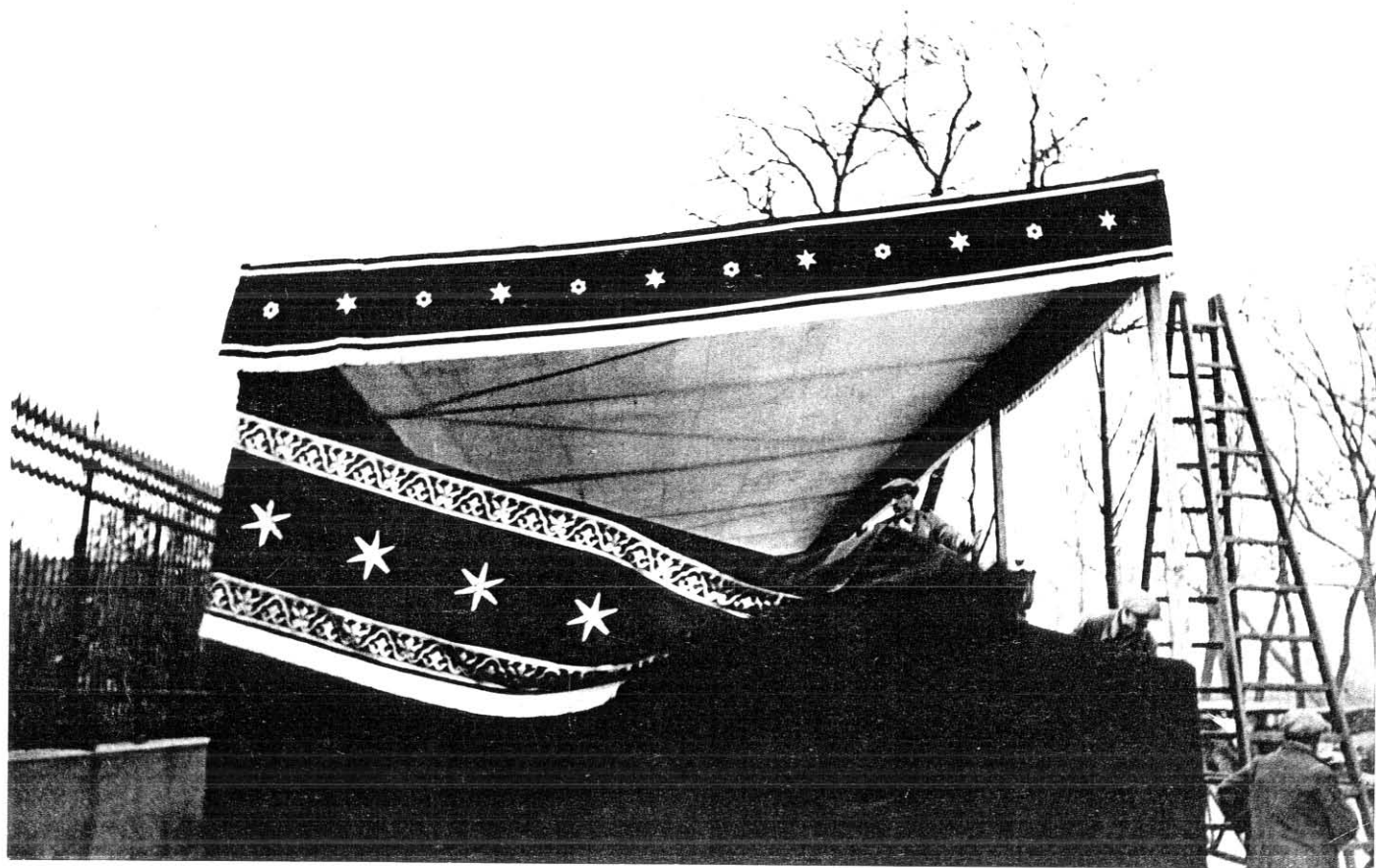


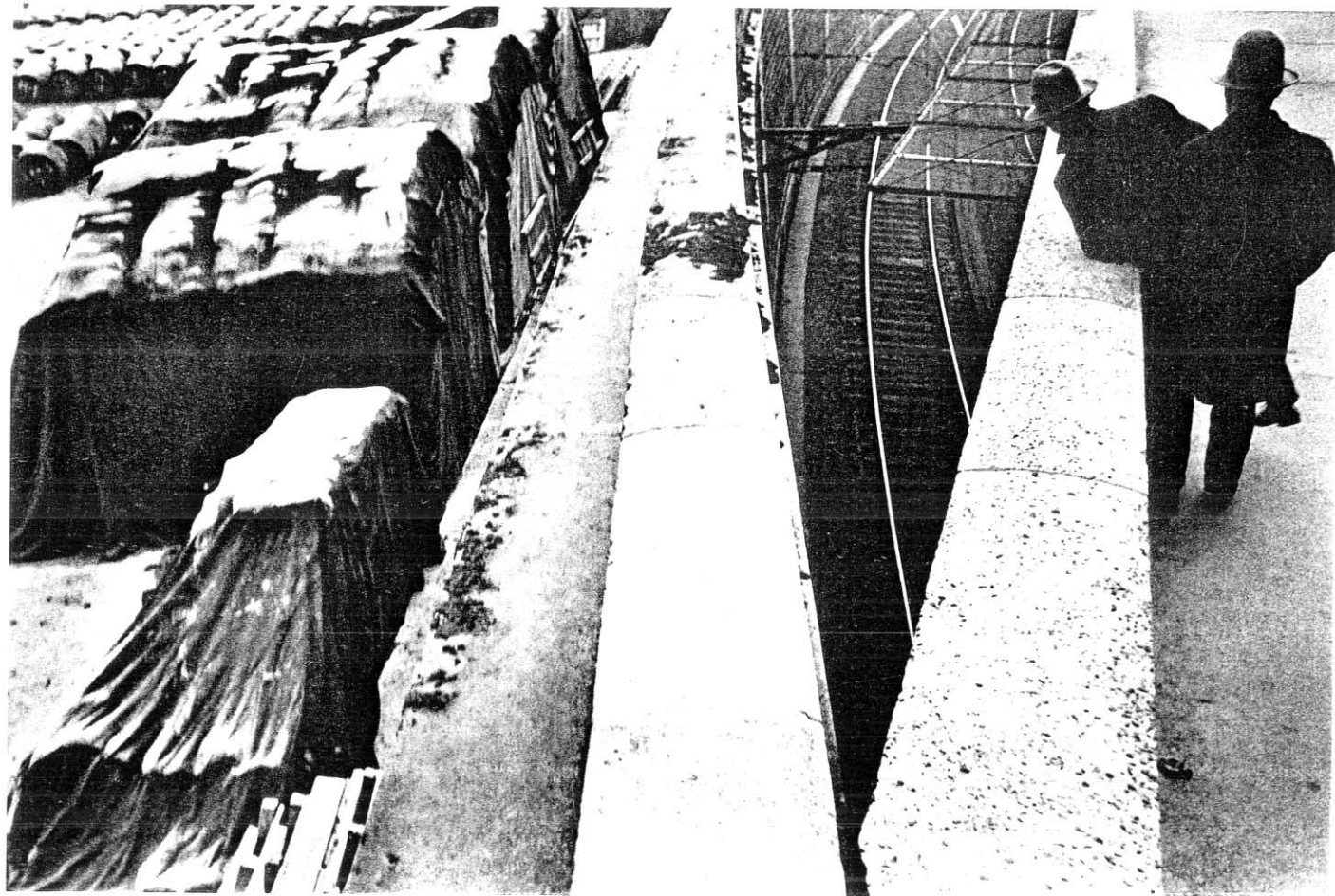


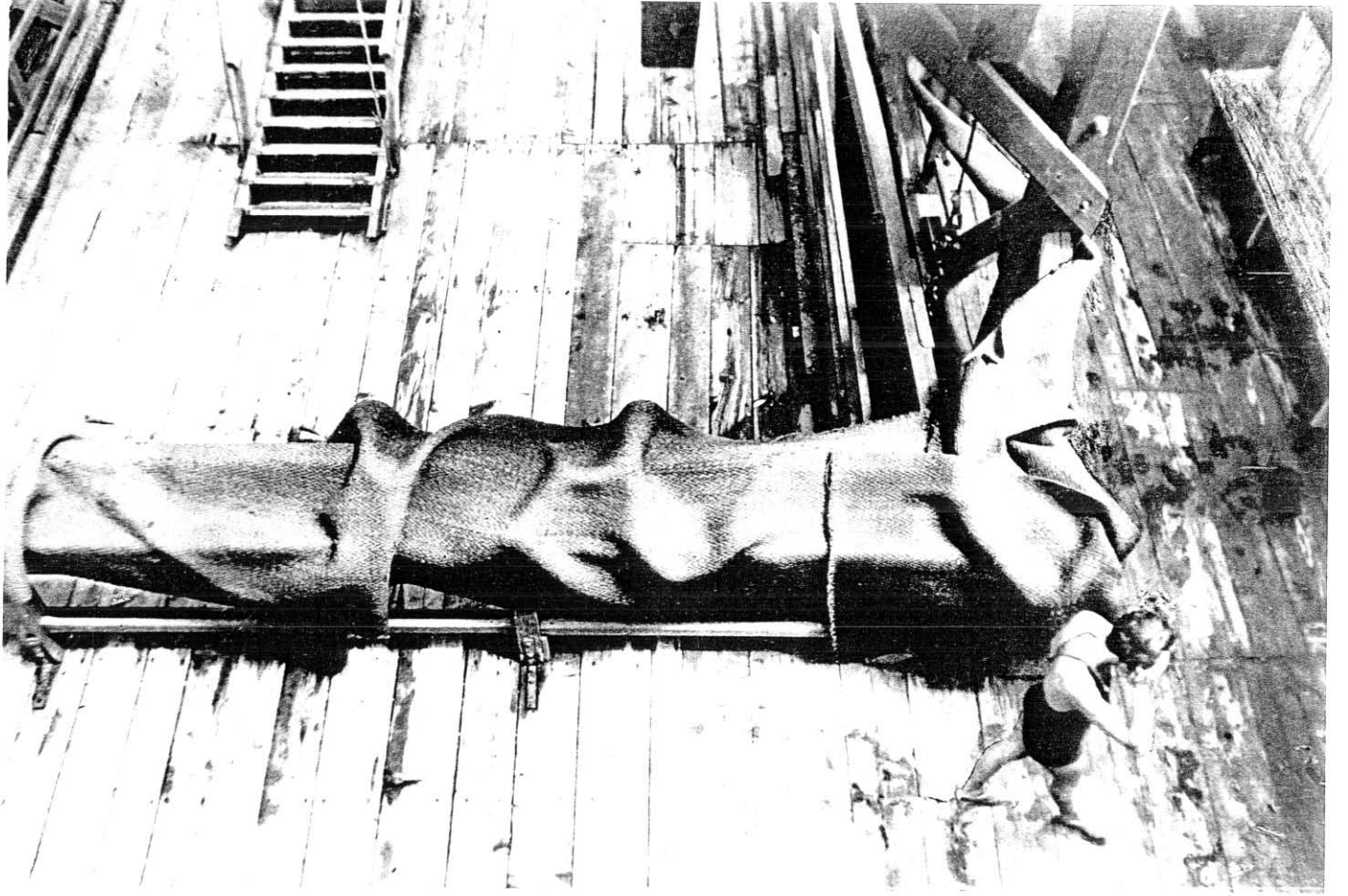


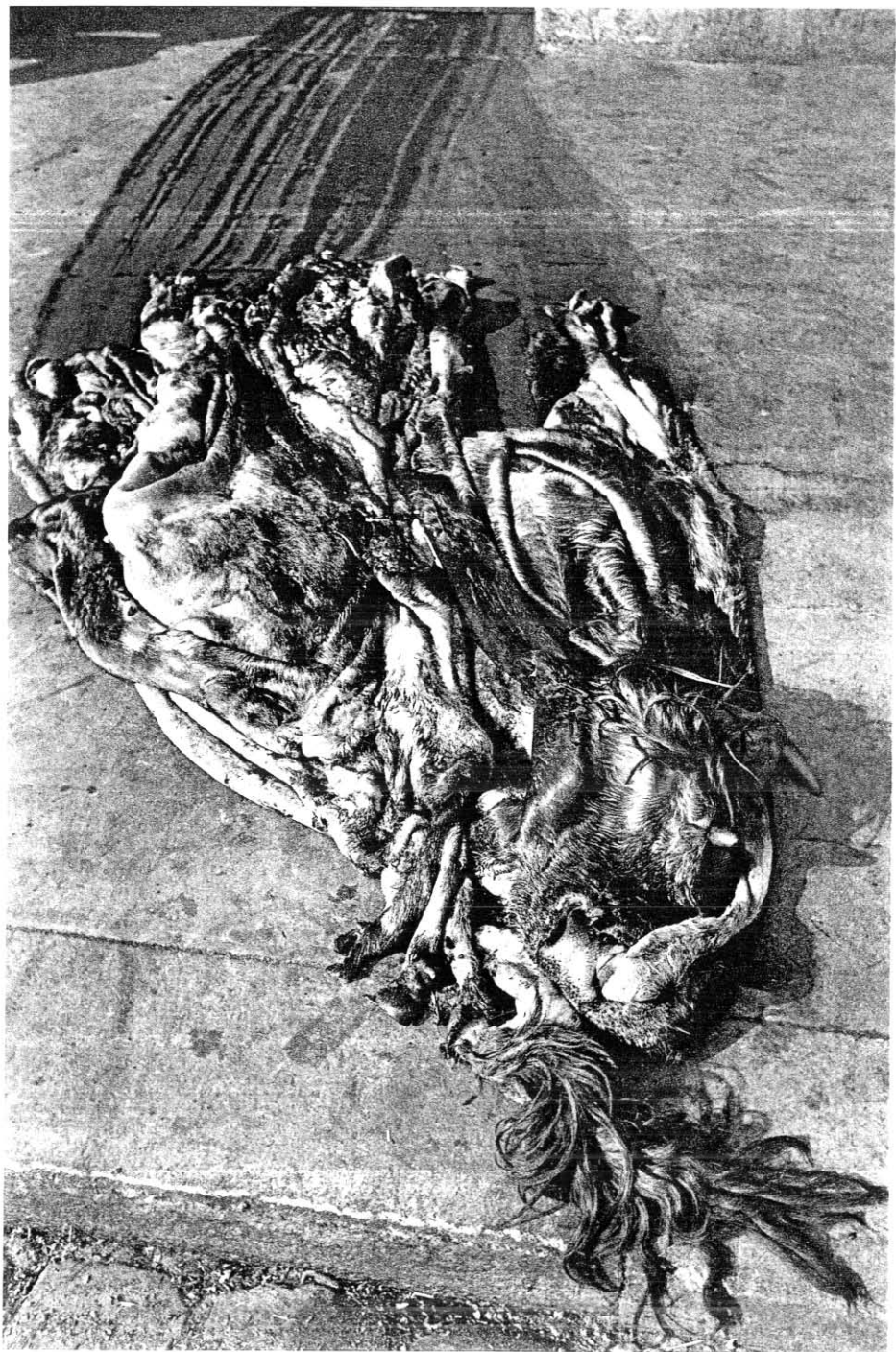


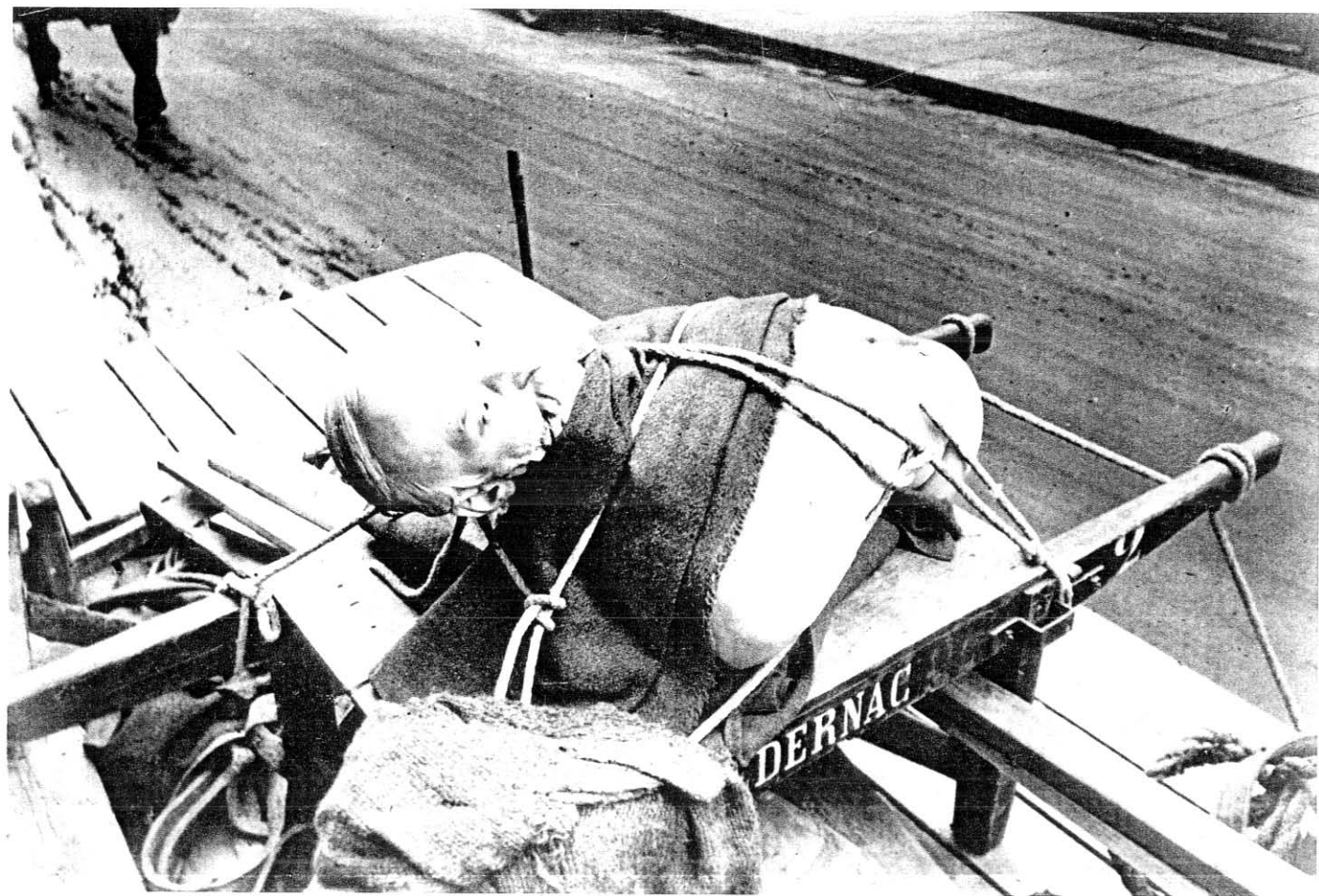




















Two women in the corridor of the
Kaiser Hotel, Tokyo, 1942



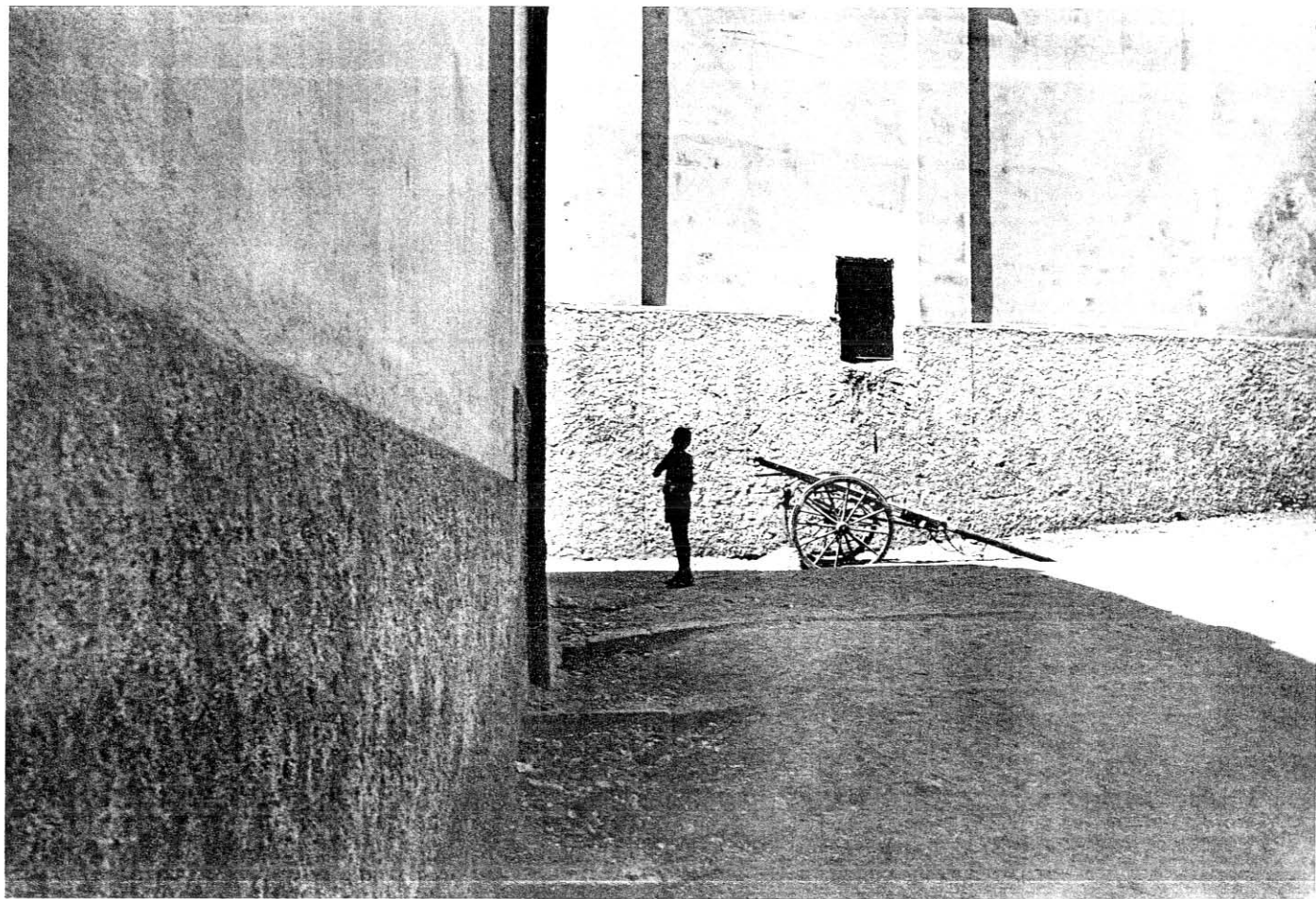
1912 July 1st



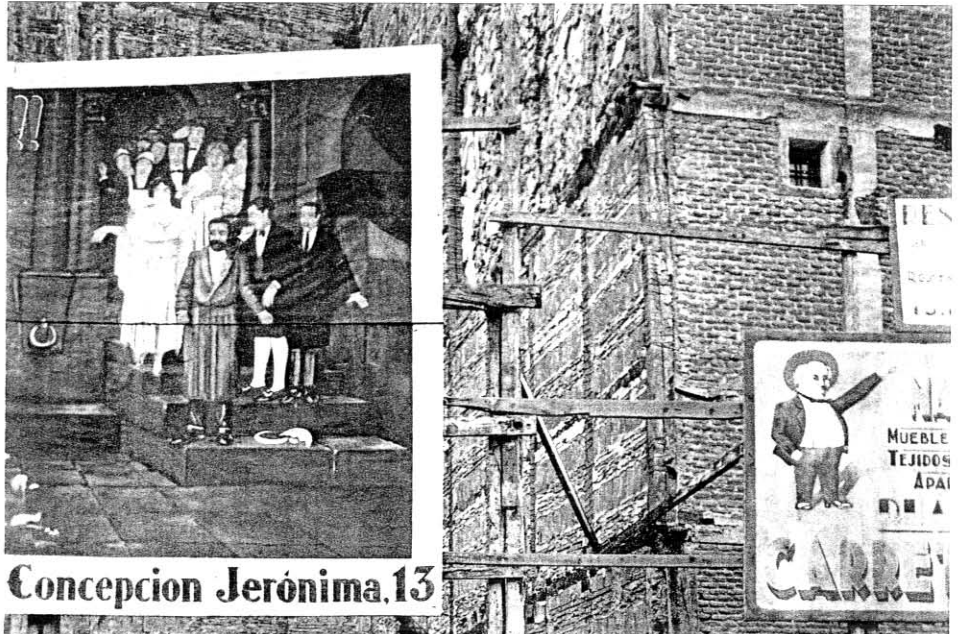


1953



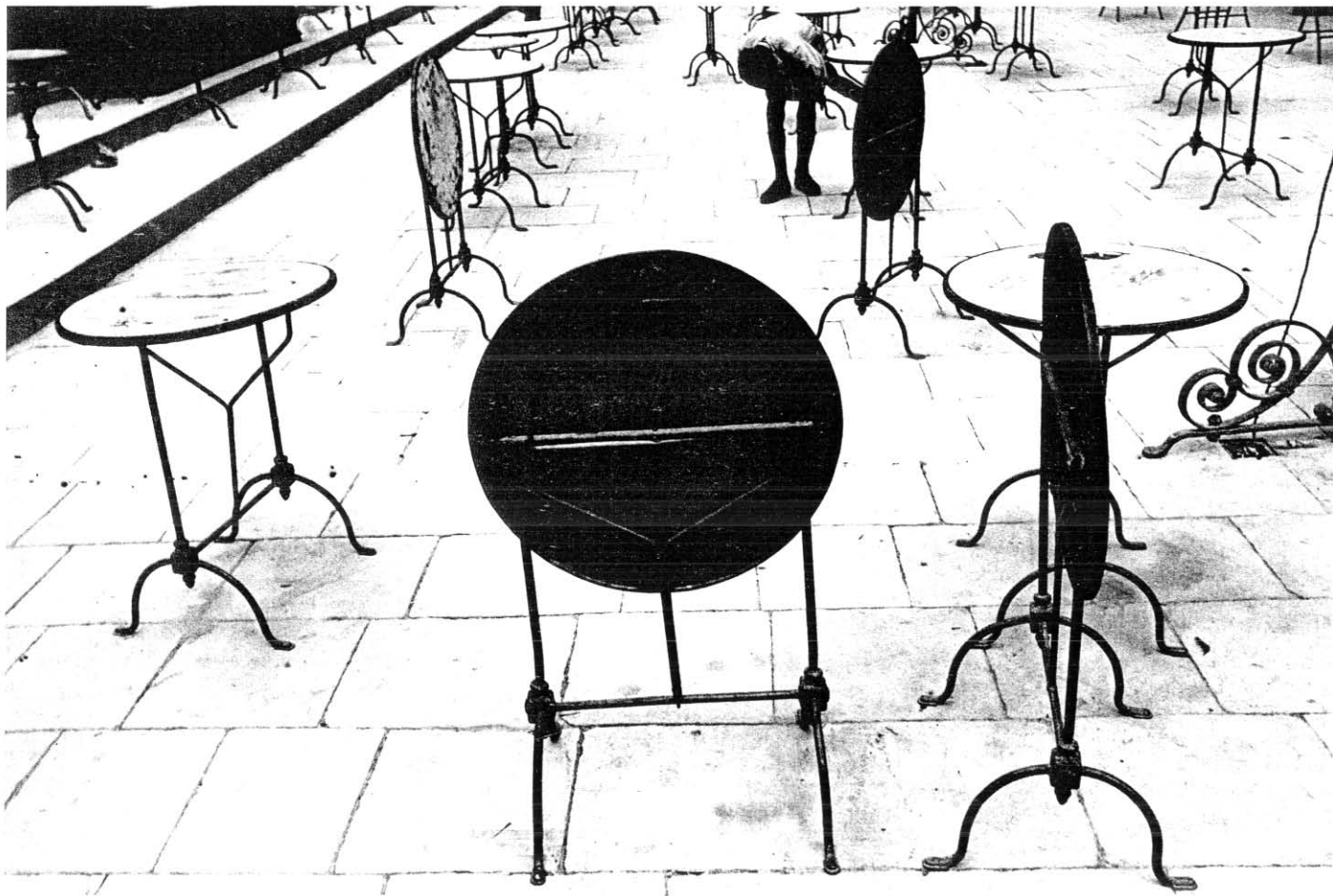






Concepcion Jerónima.13

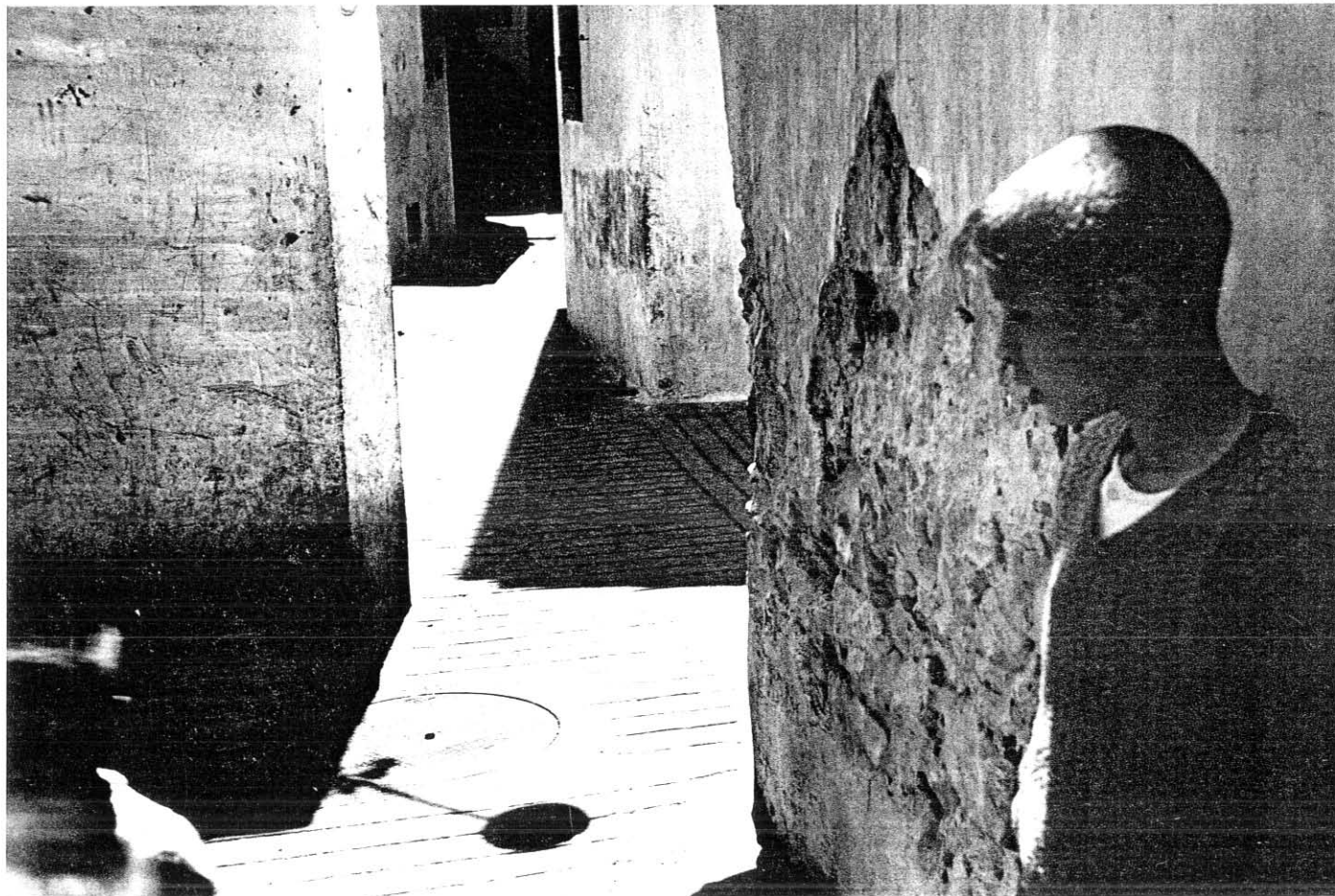






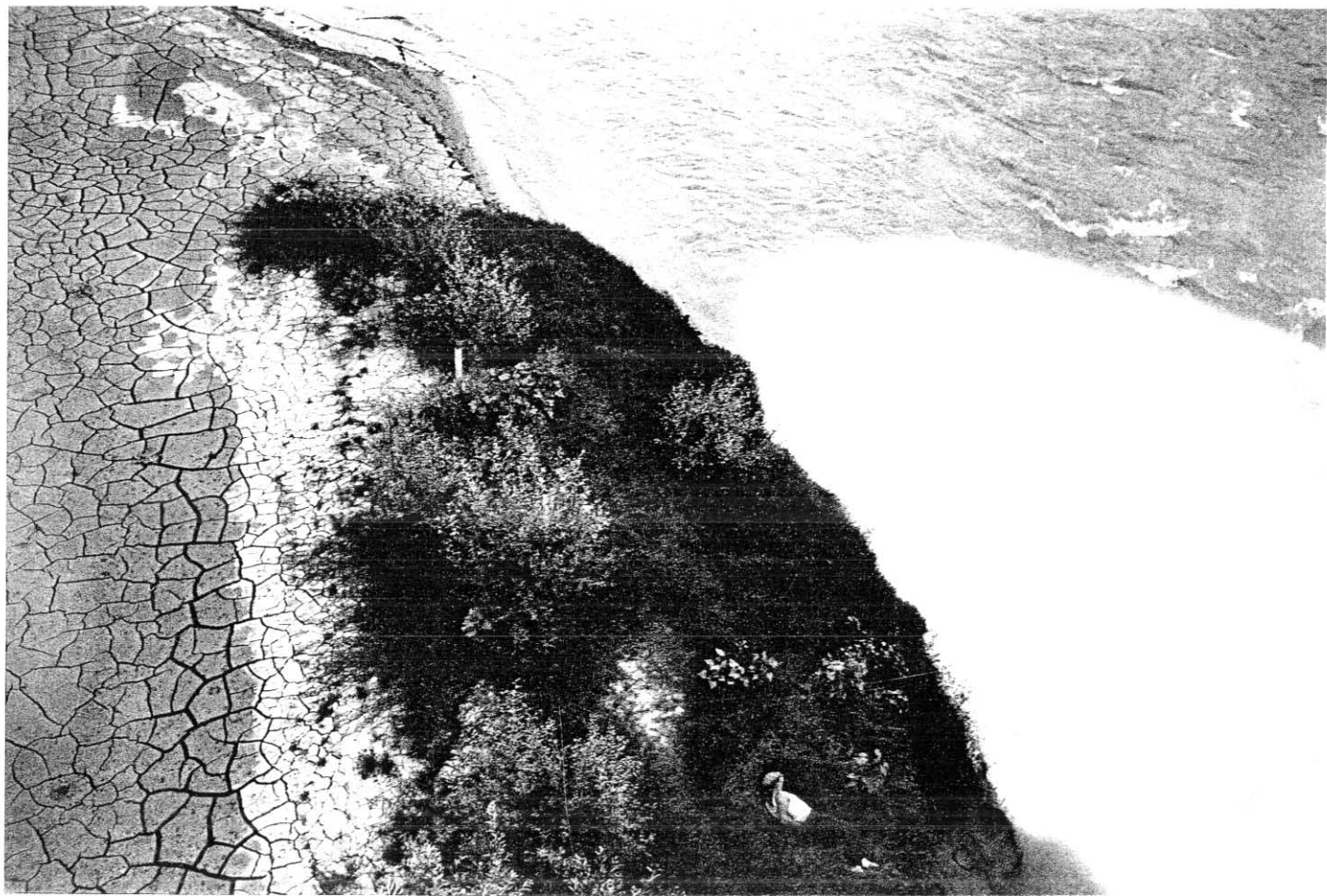


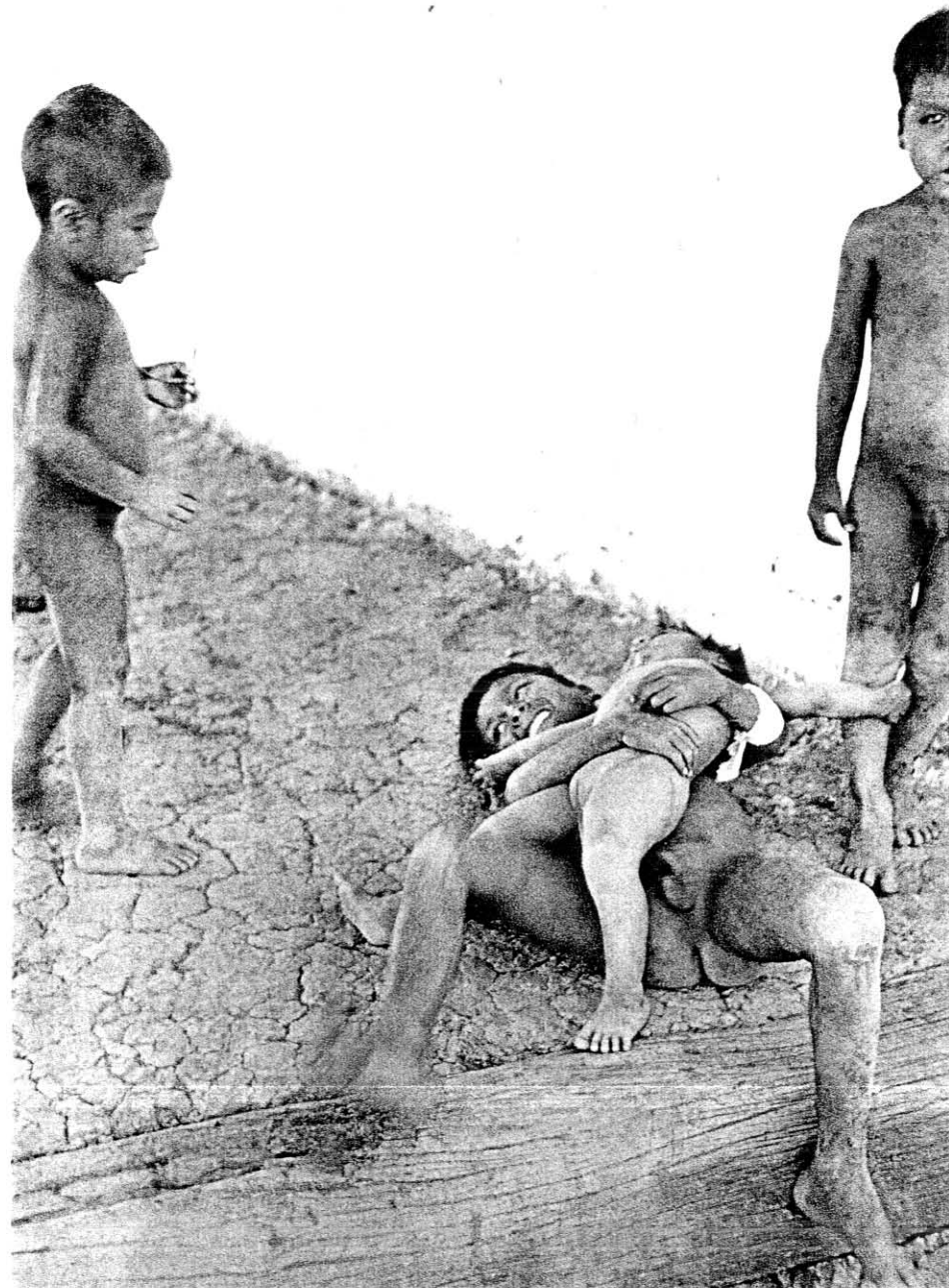






Italy 1958-59



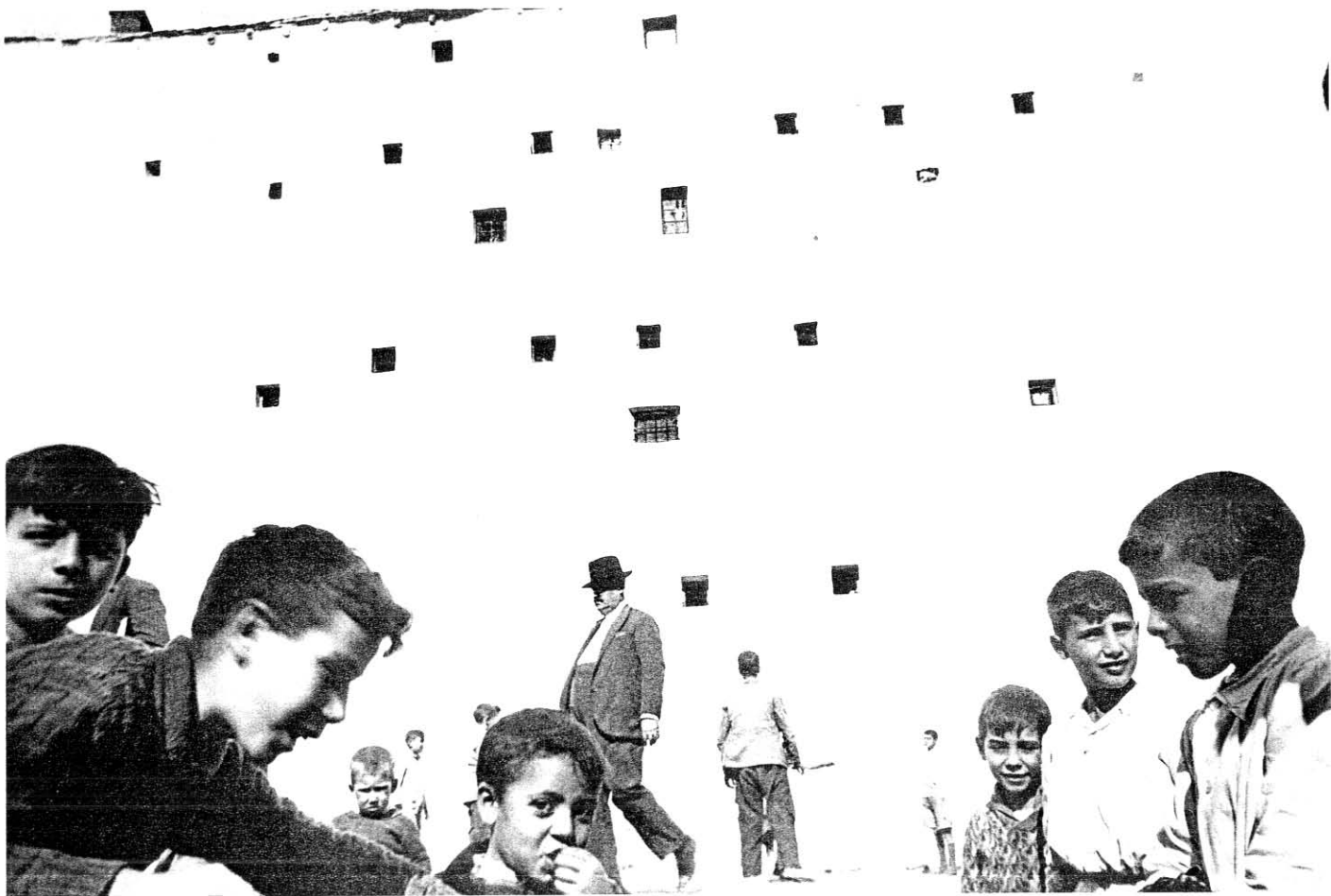










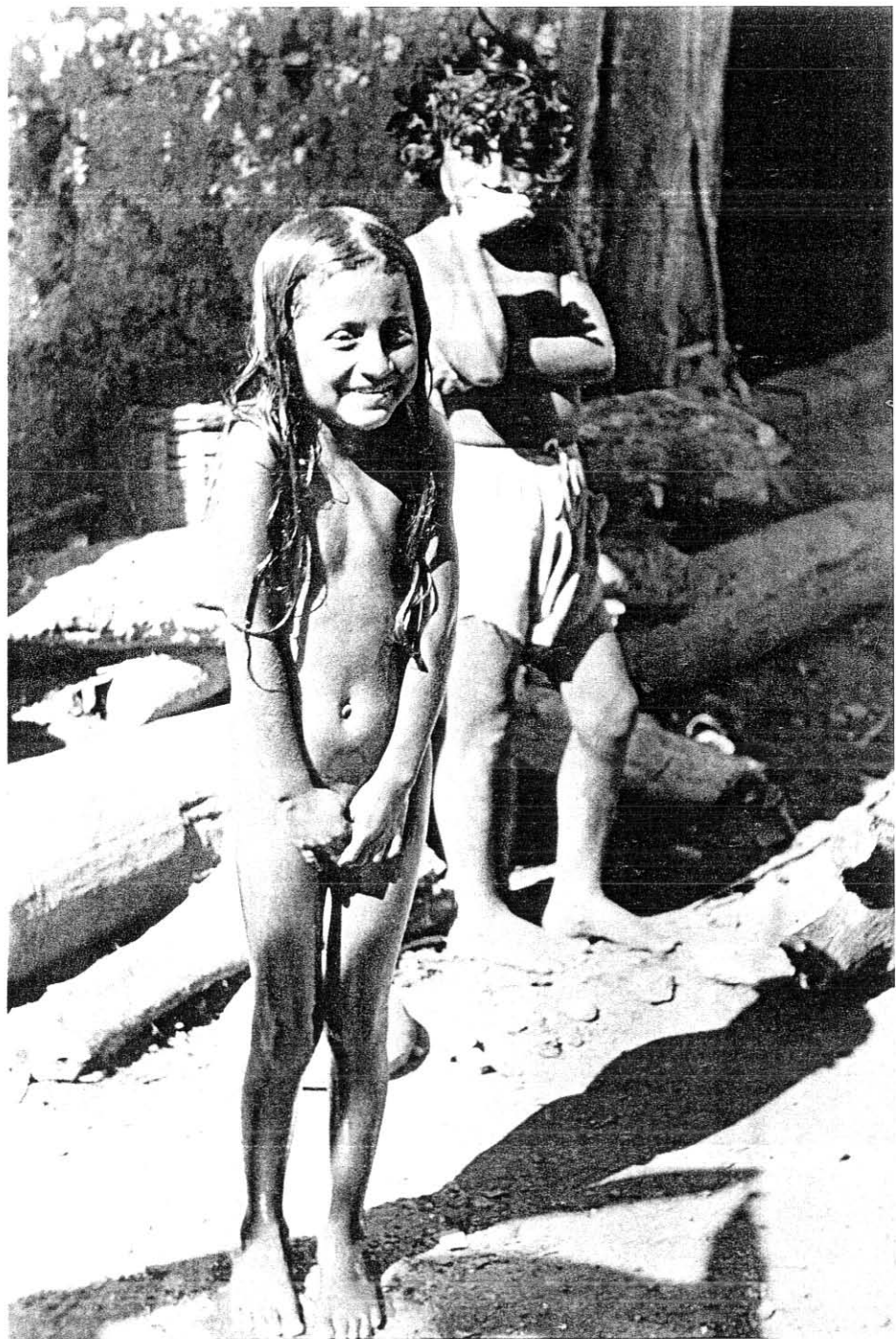


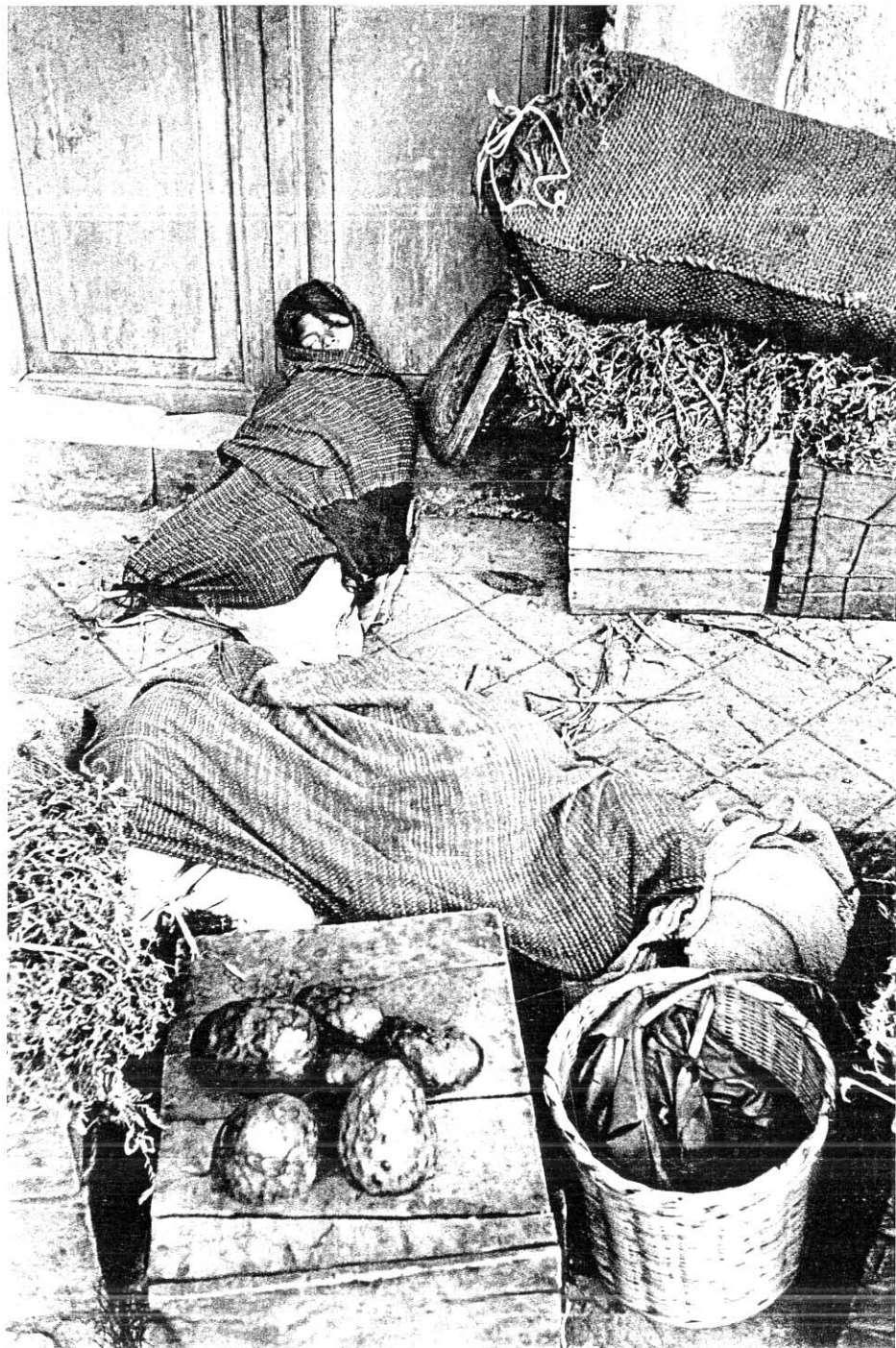






Mexico City 1944

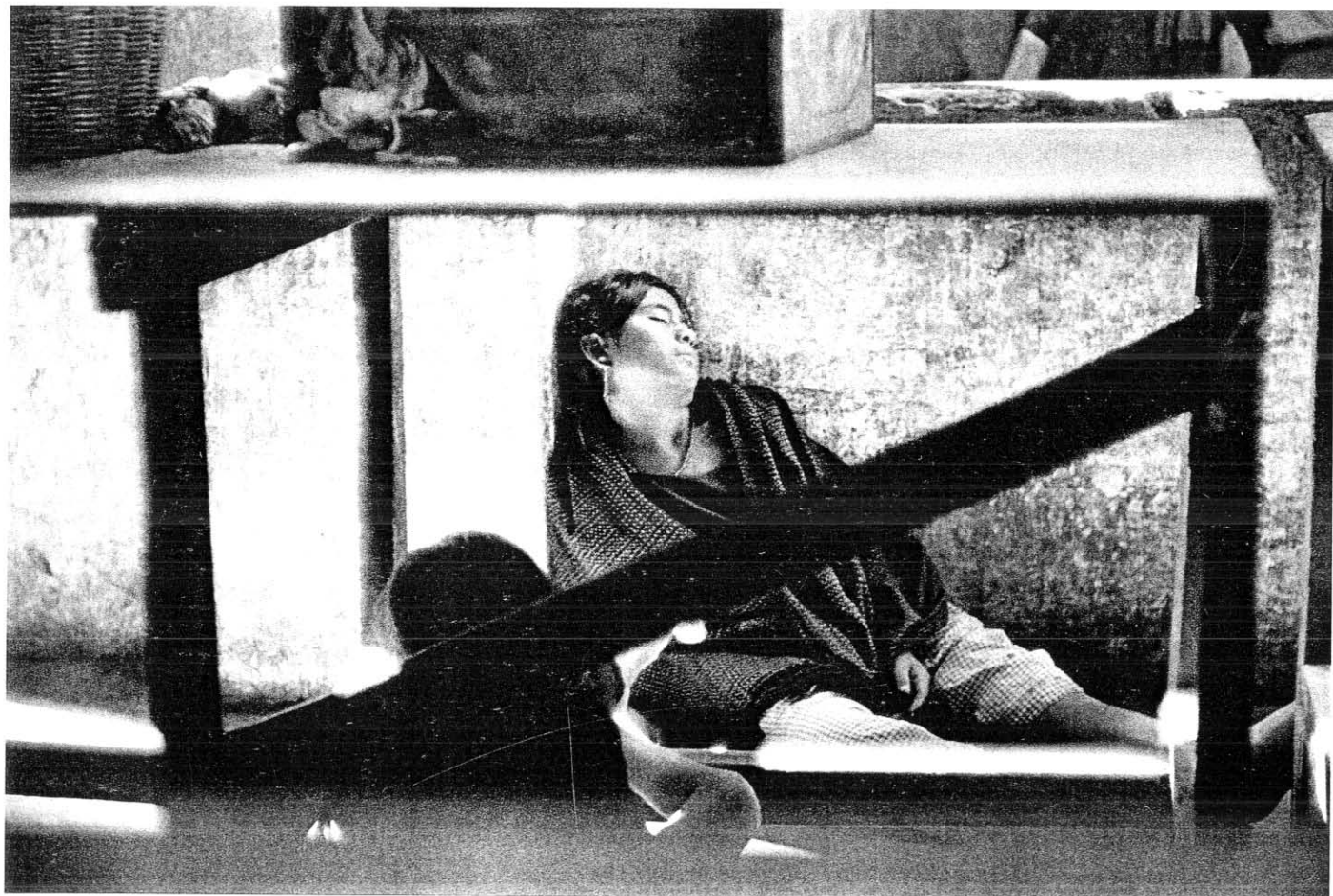




























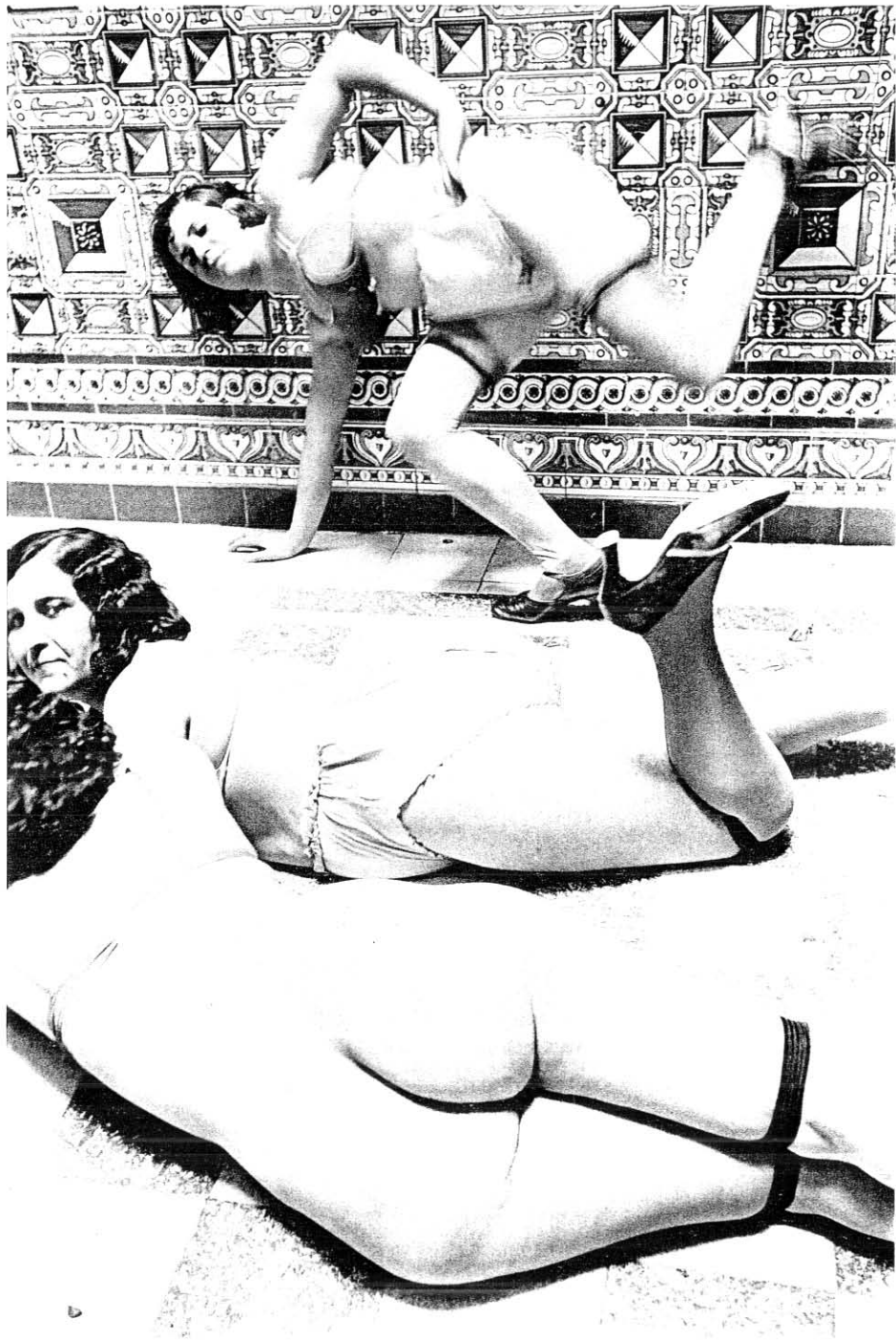


















MAY 1987



