

#6609

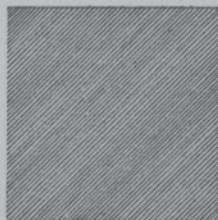
6 30



1



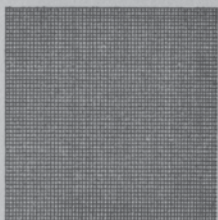
2



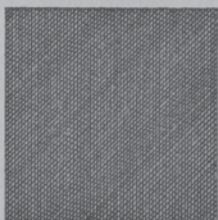
3



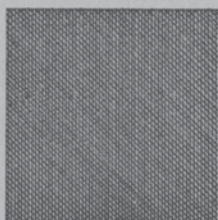
4



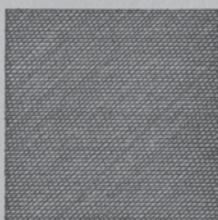
12



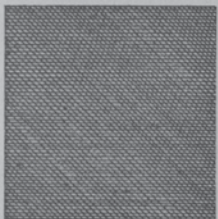
13



14



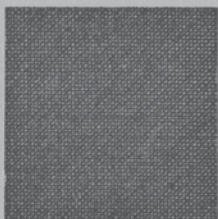
23



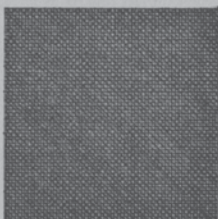
24



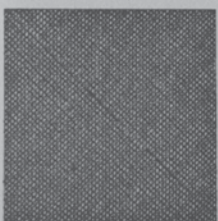
34



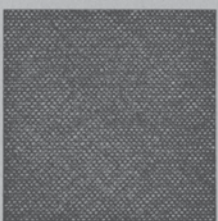
123



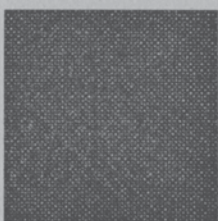
124



134

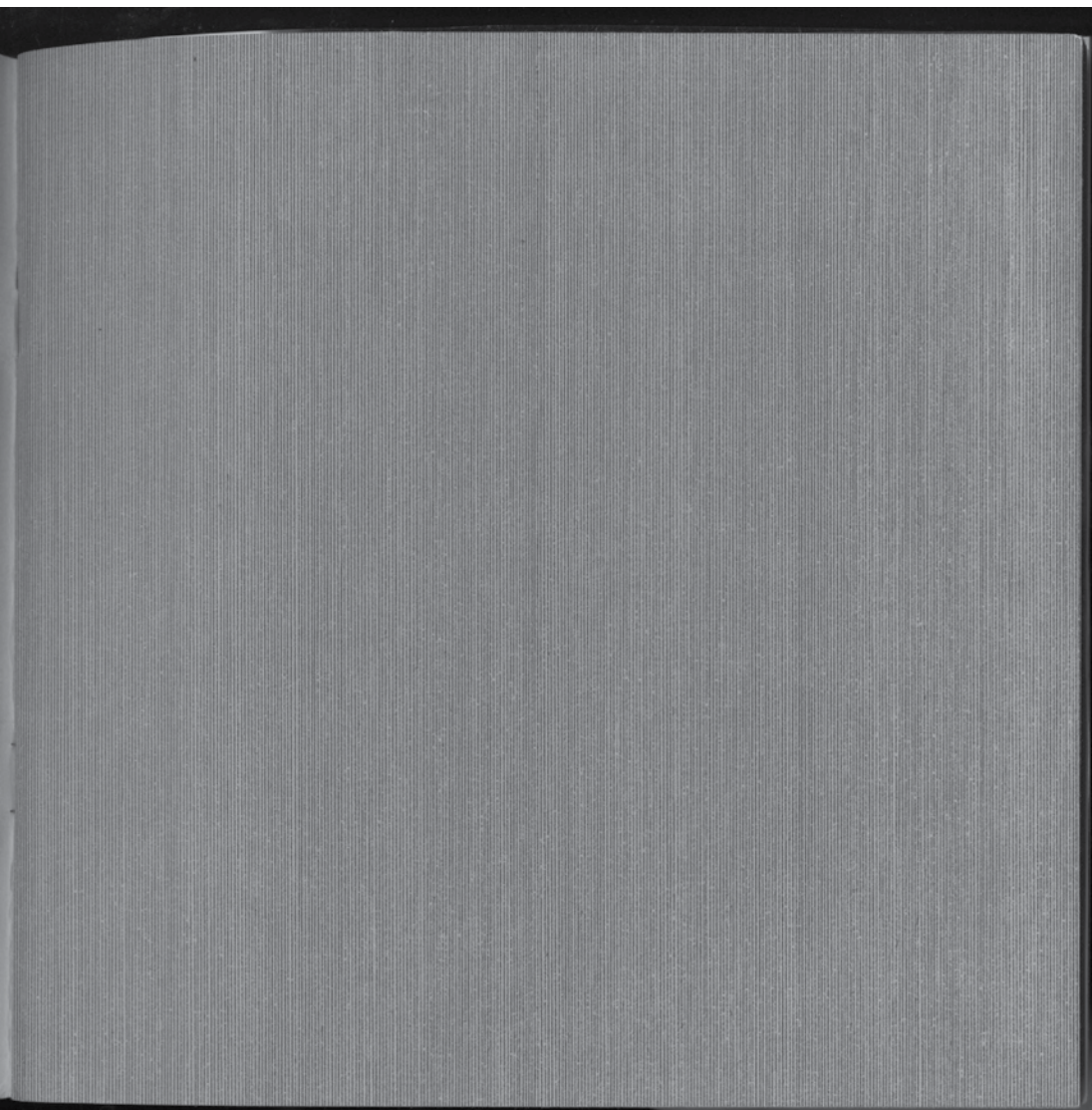


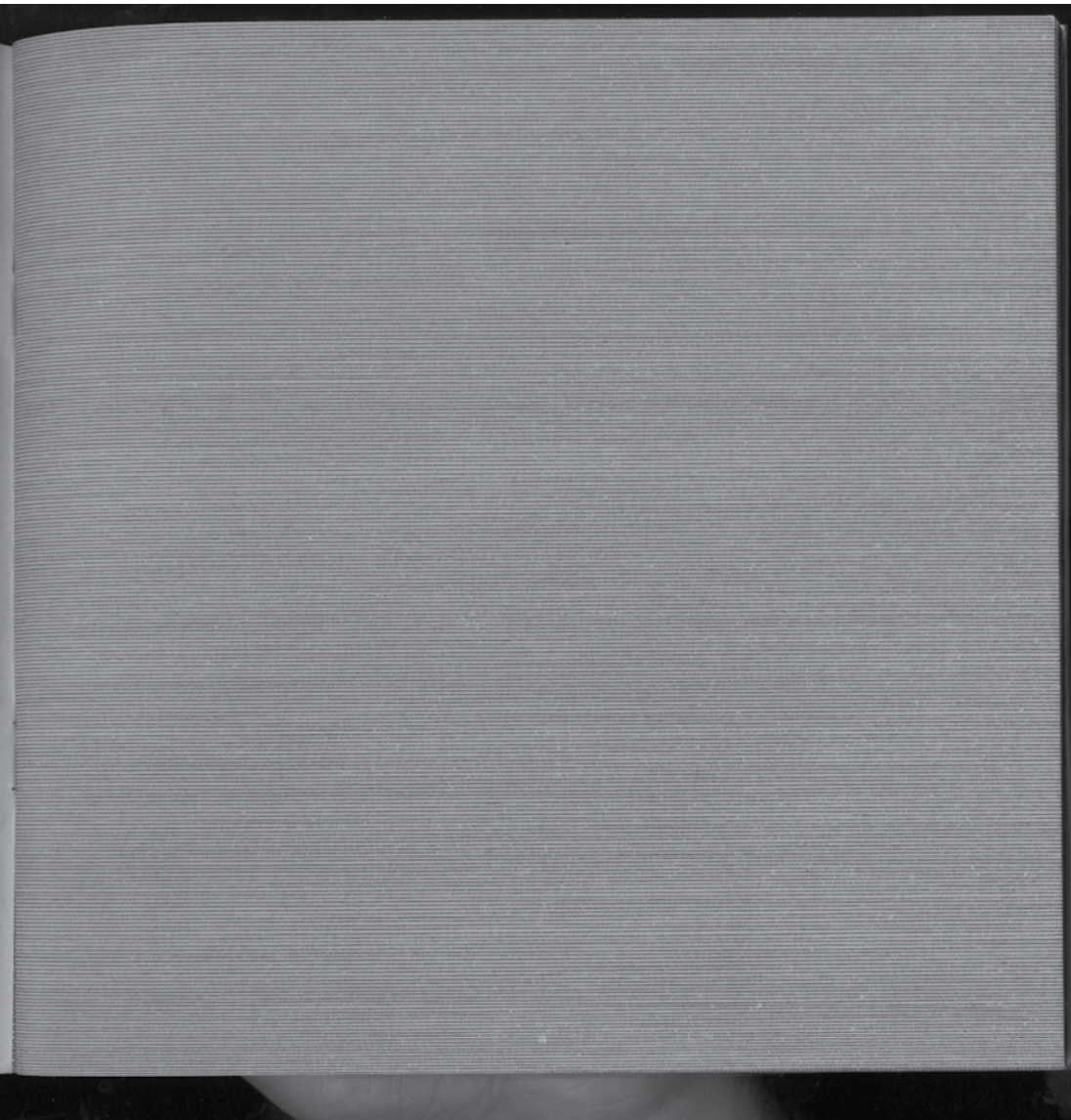
234

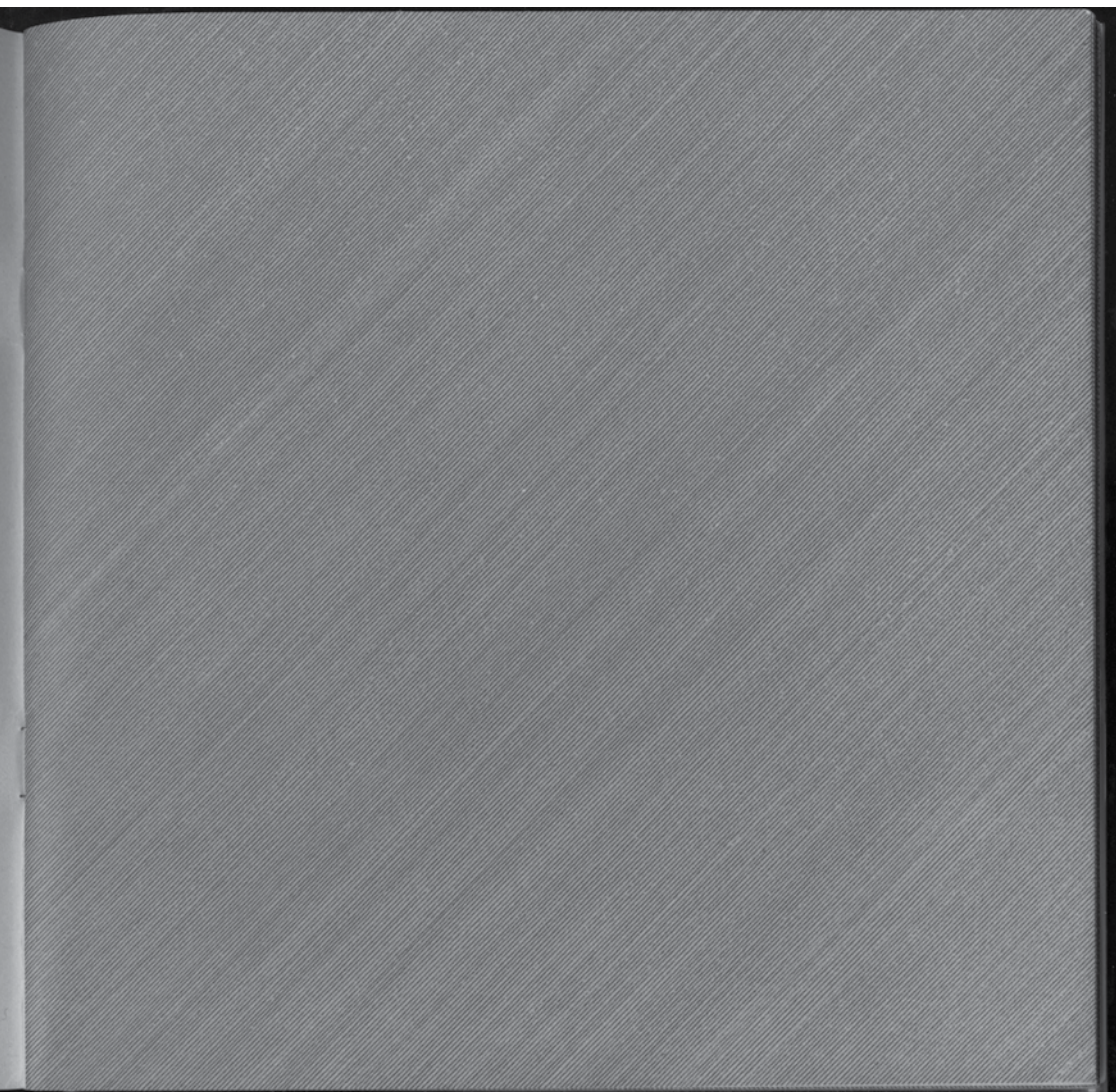


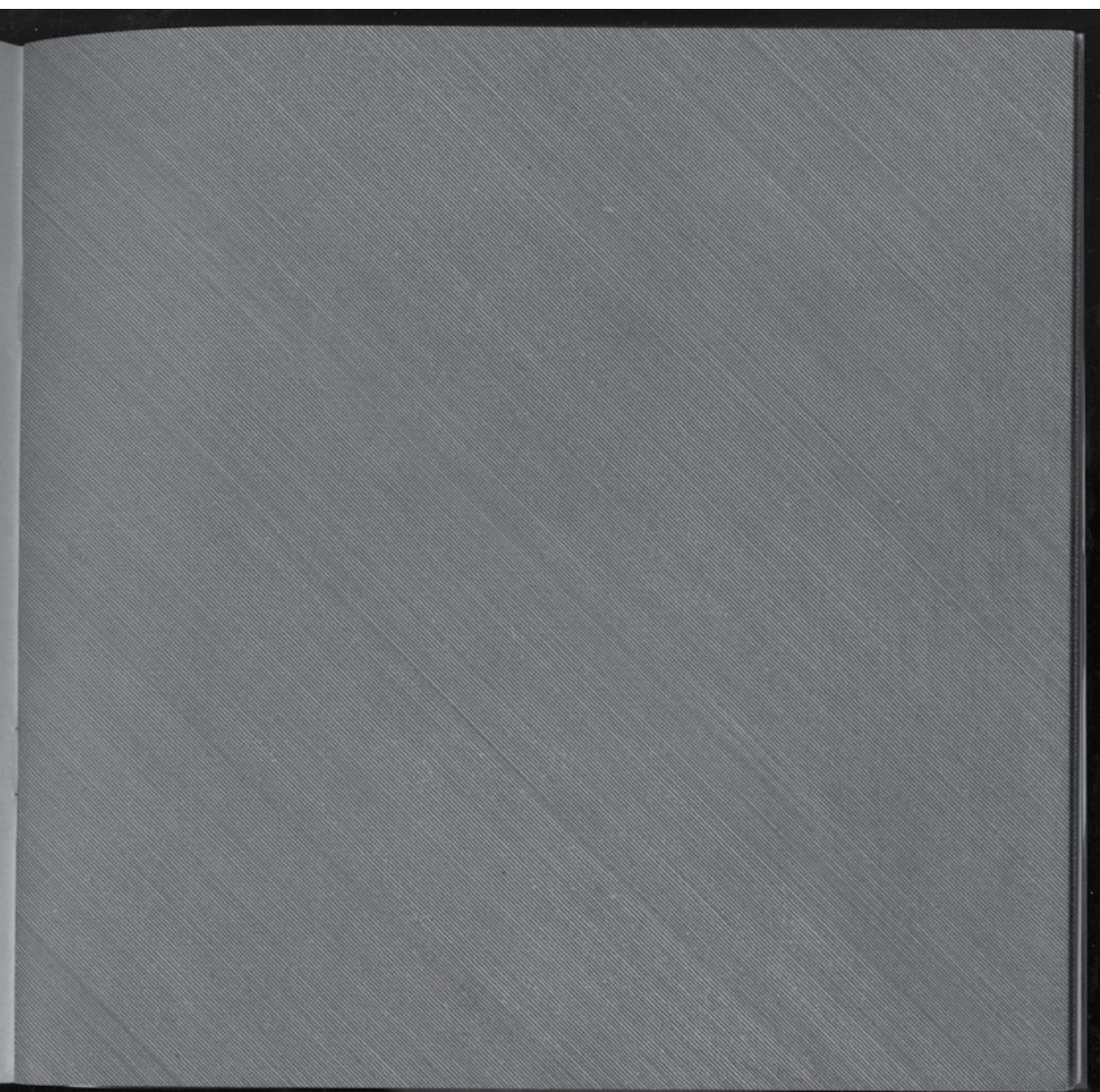
1234

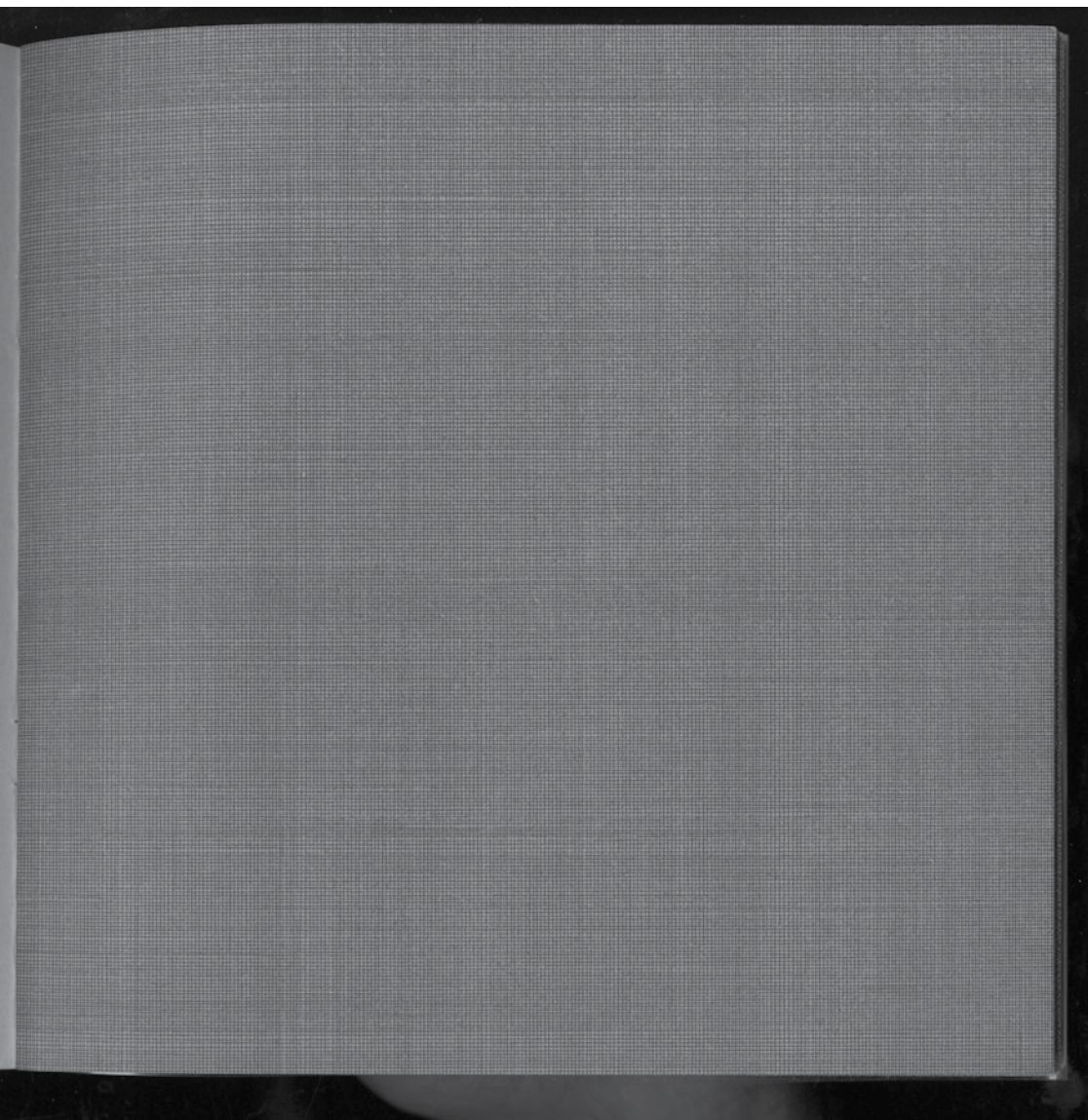
four basic kinds
of Straight lines;
1. Vertical
2. Horizontal
3. Diagonal l. to r.
4. Diagonal r. to l.
and their combinations
S. LEWITT 1969.

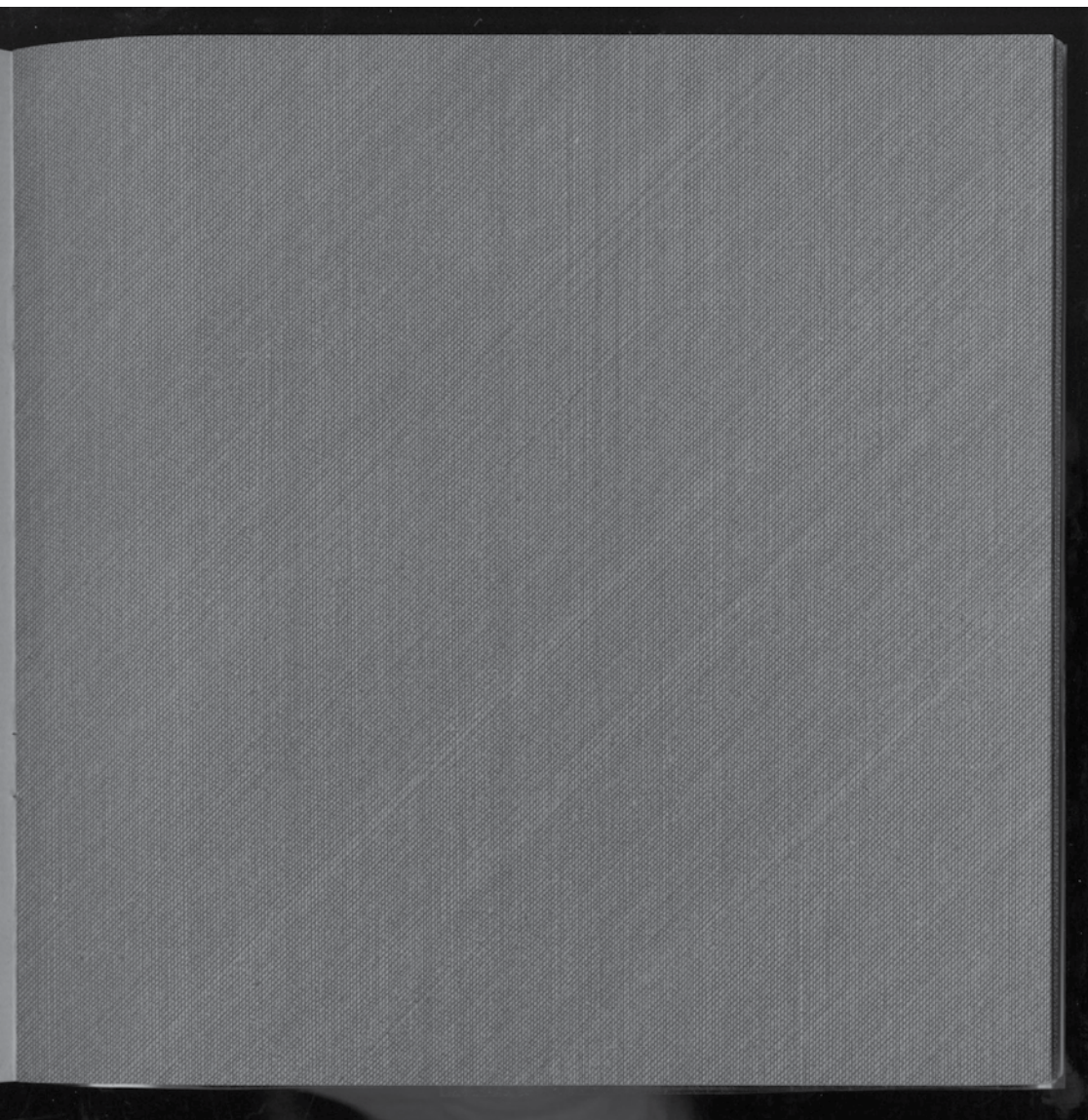


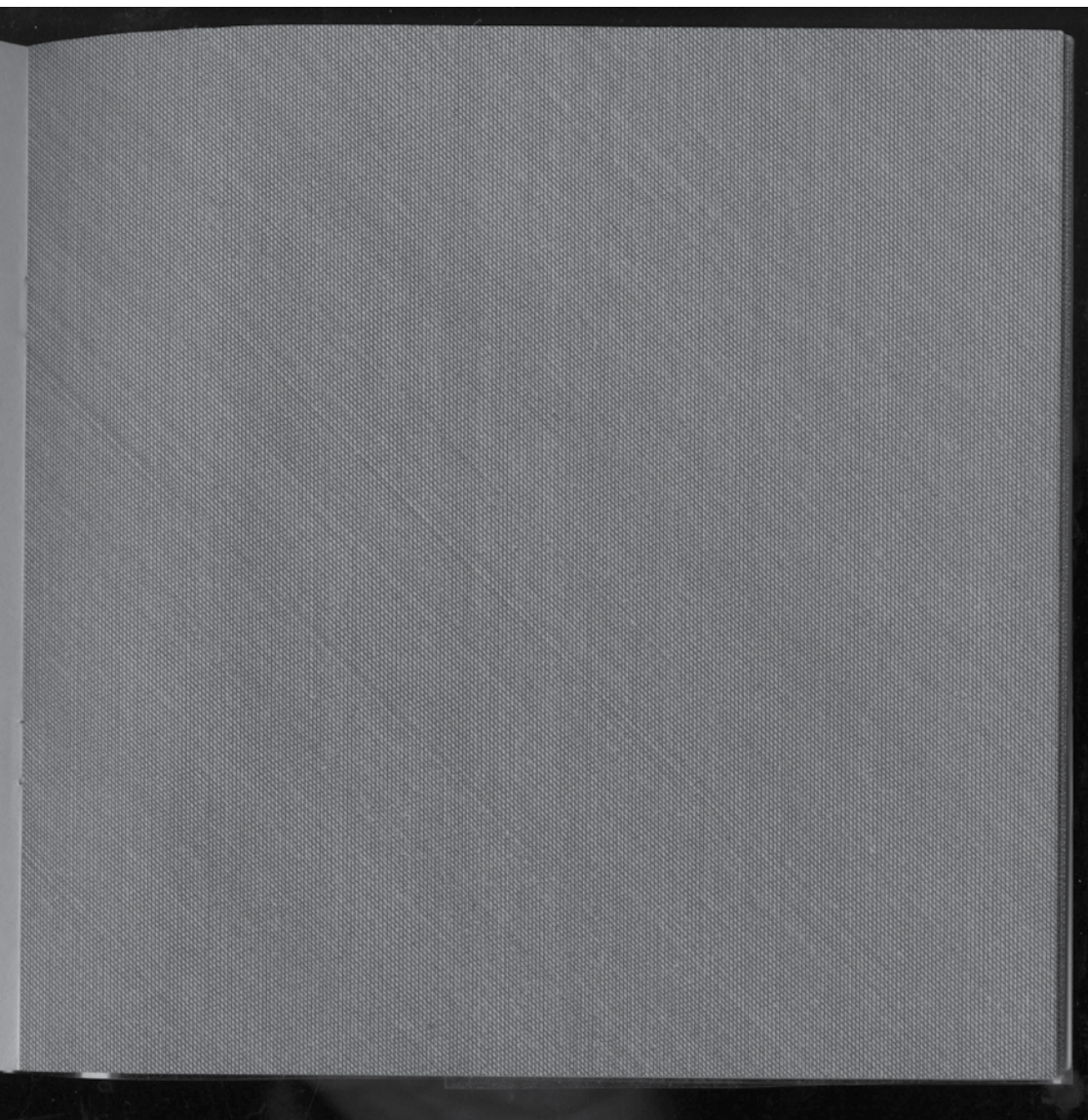


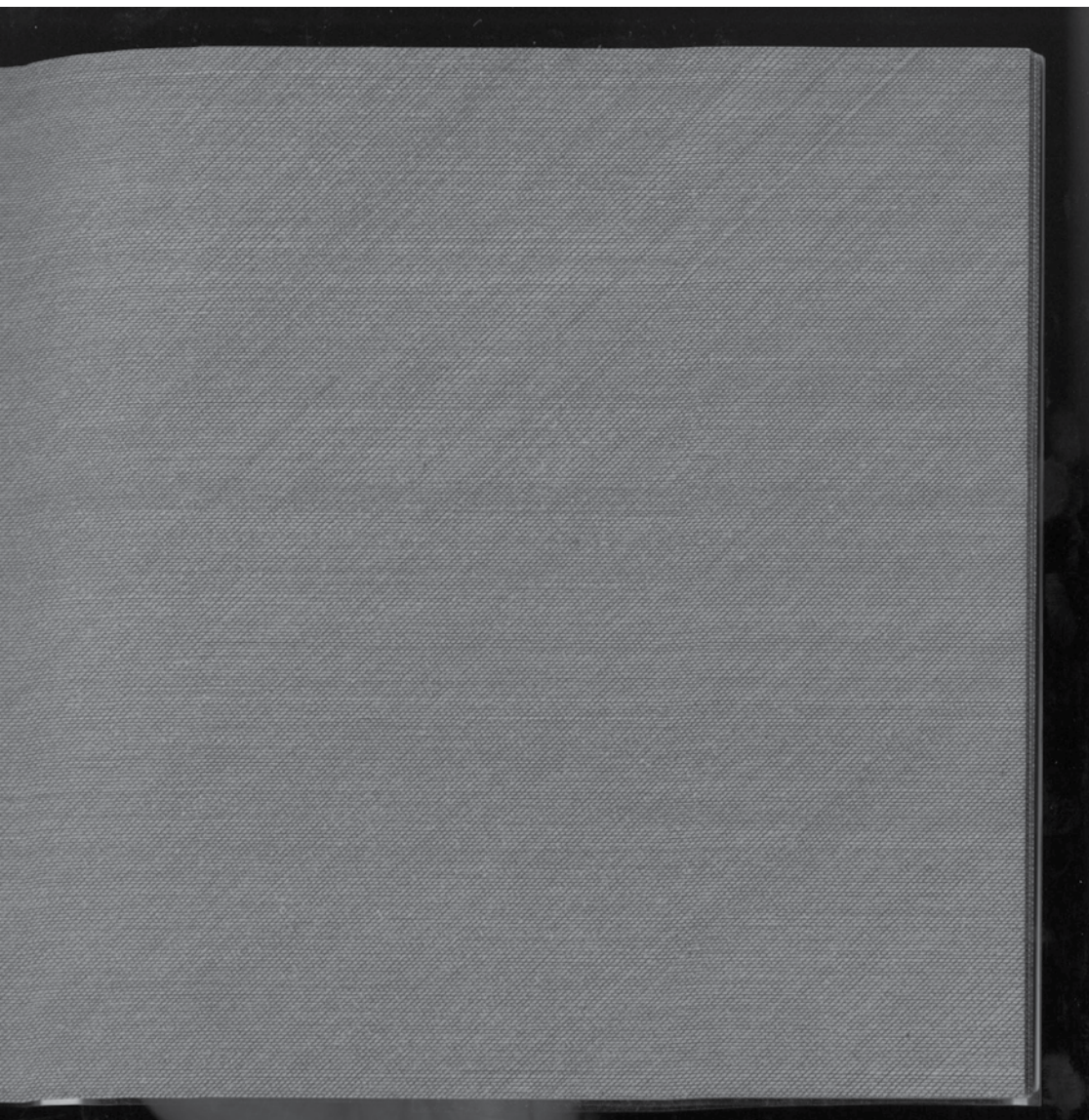


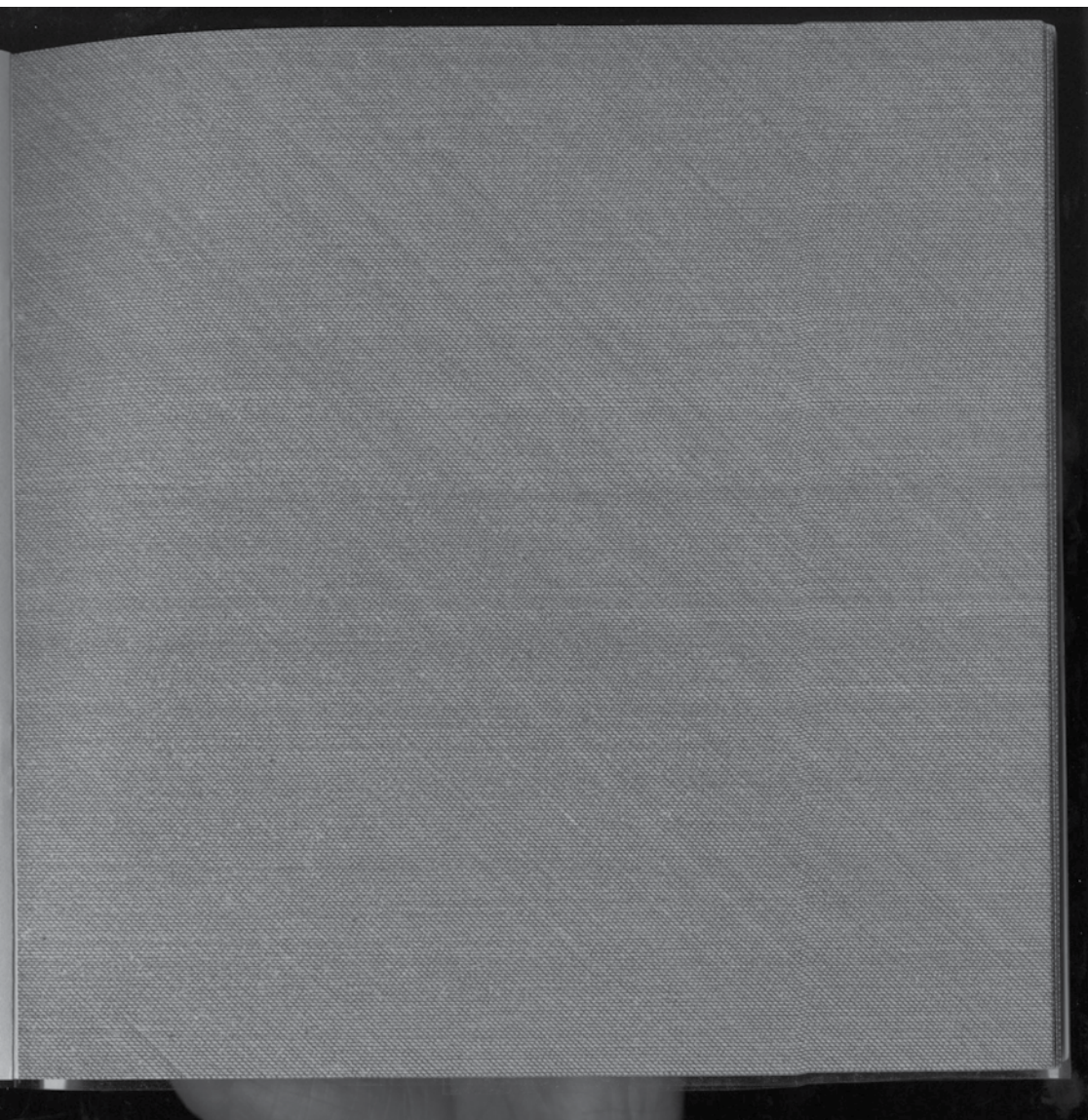


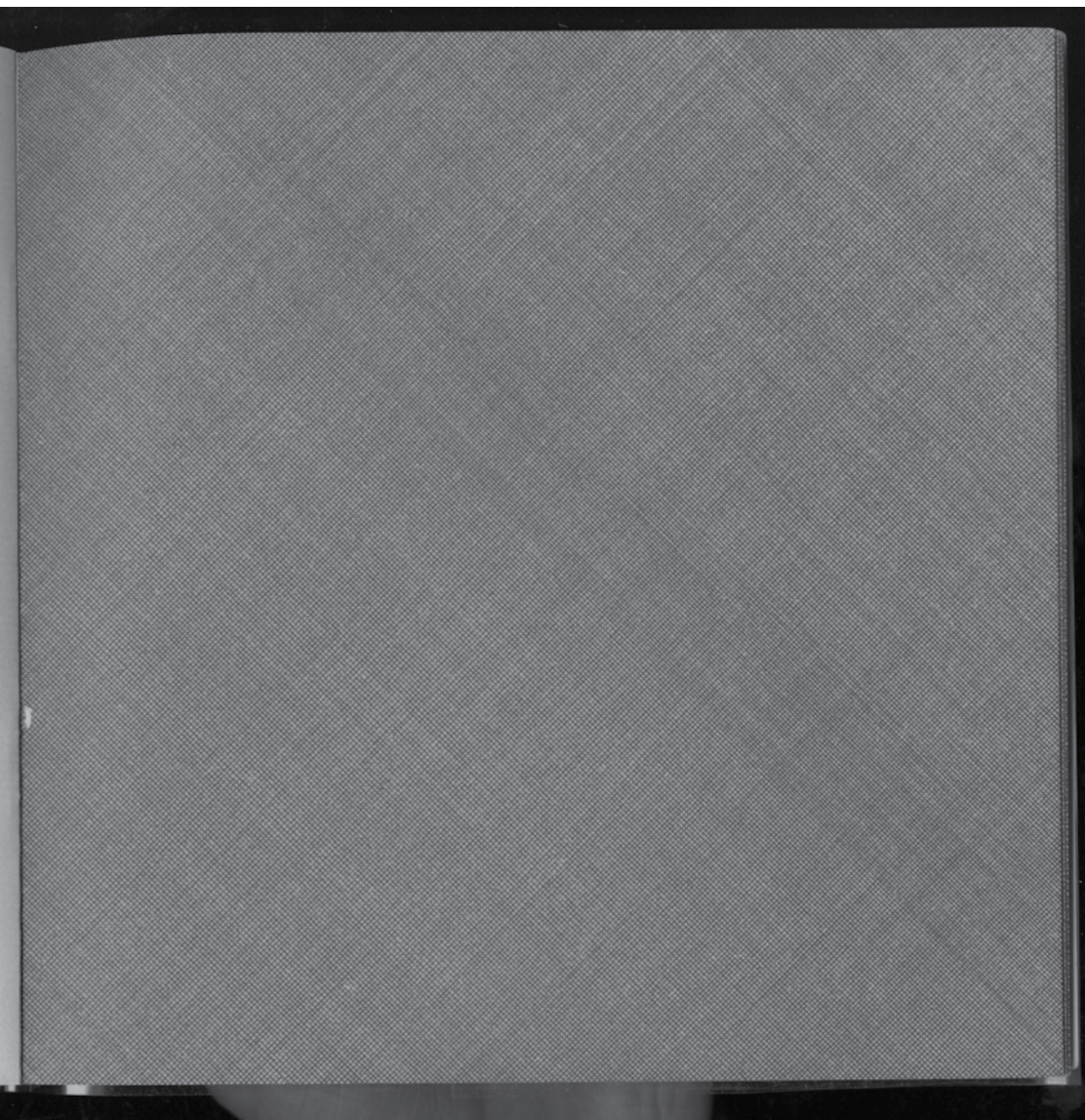


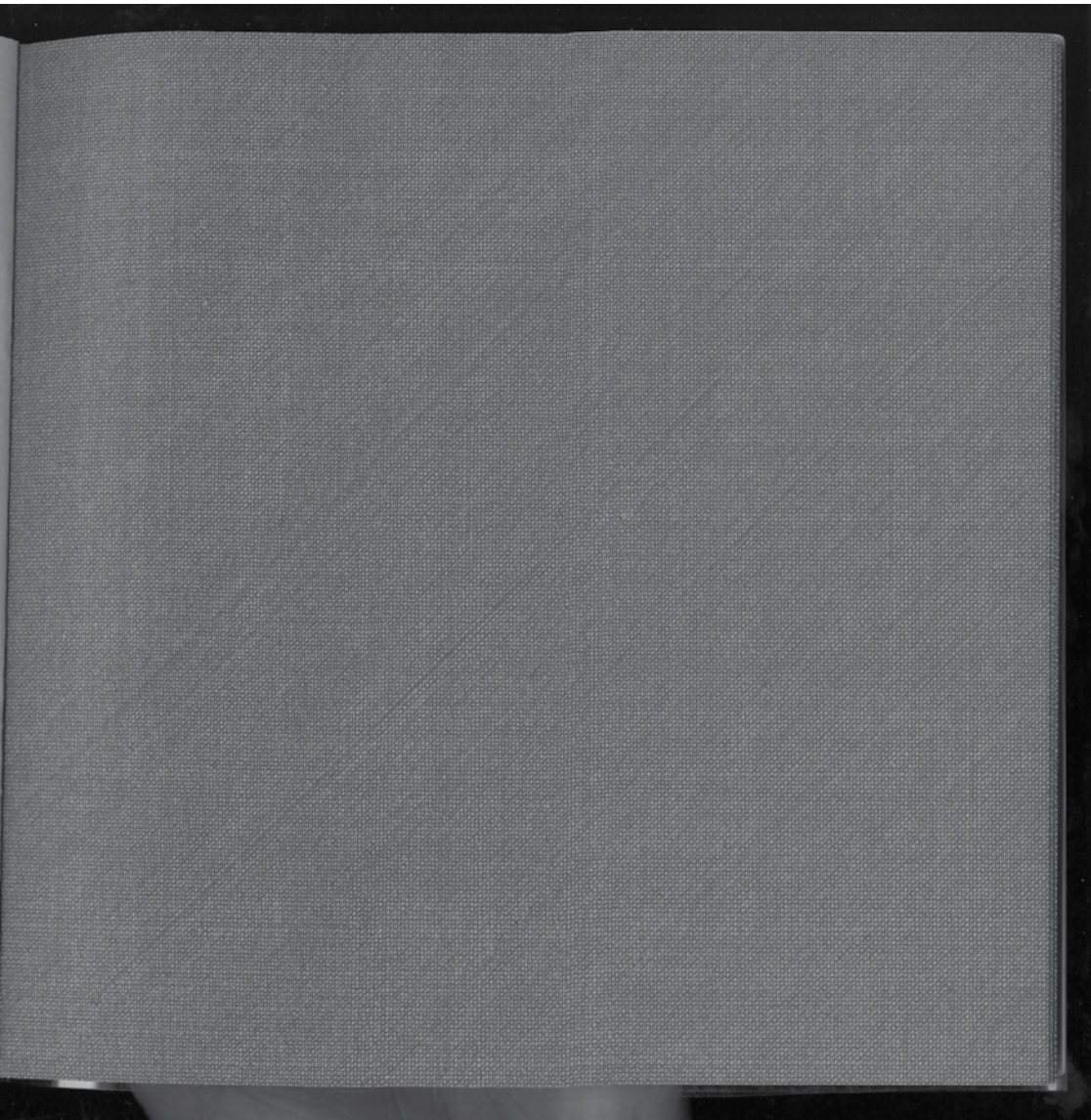


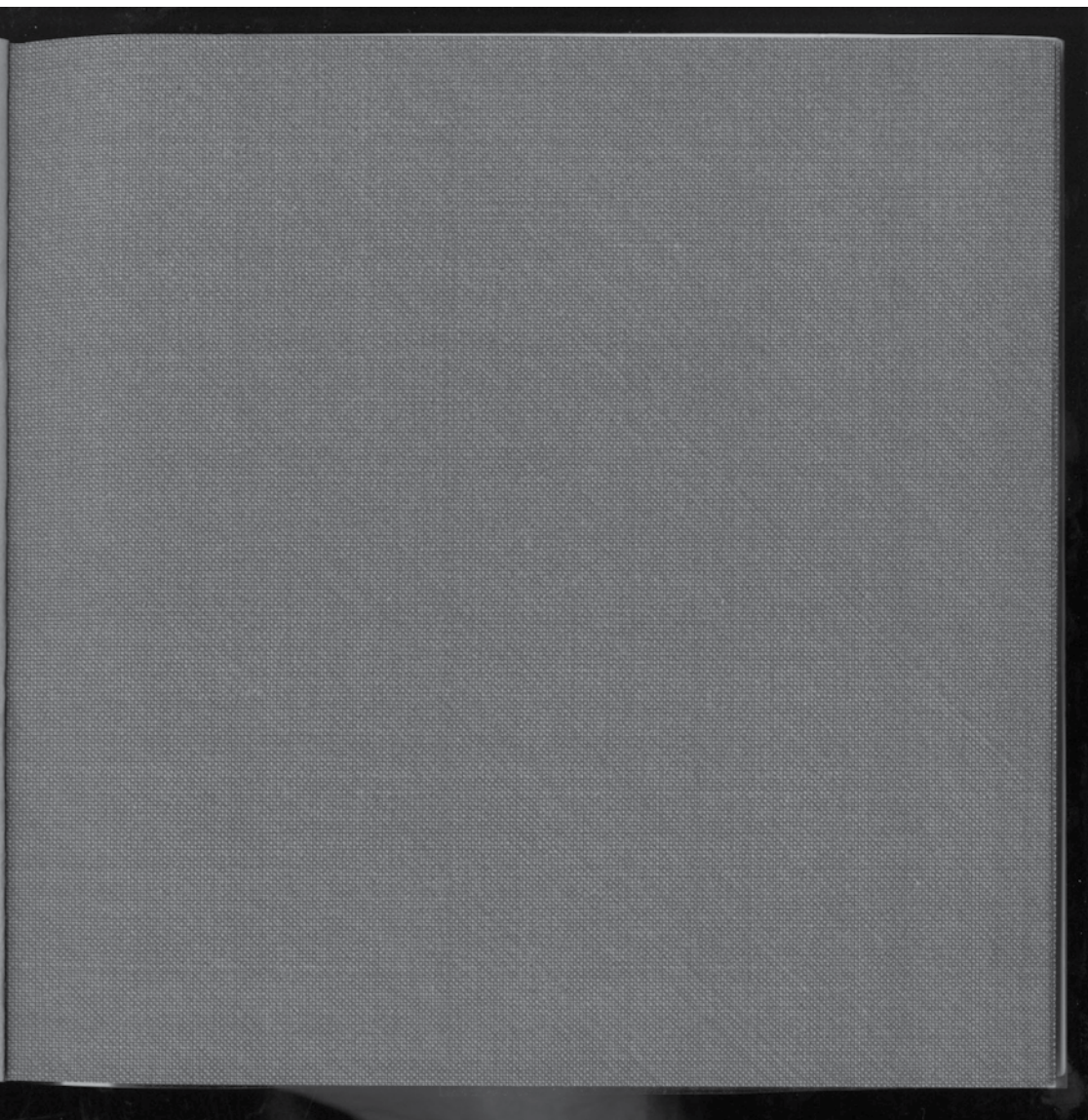


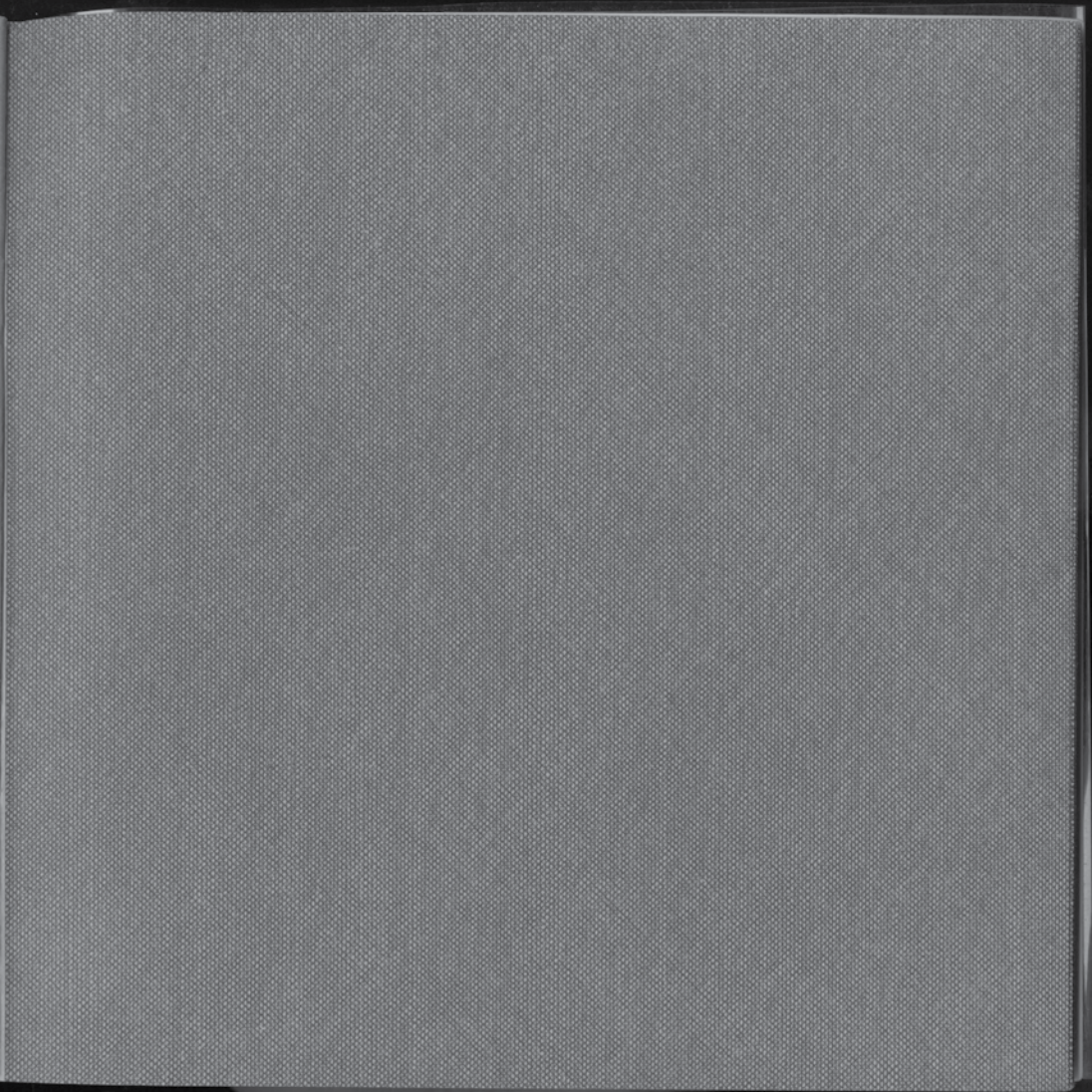


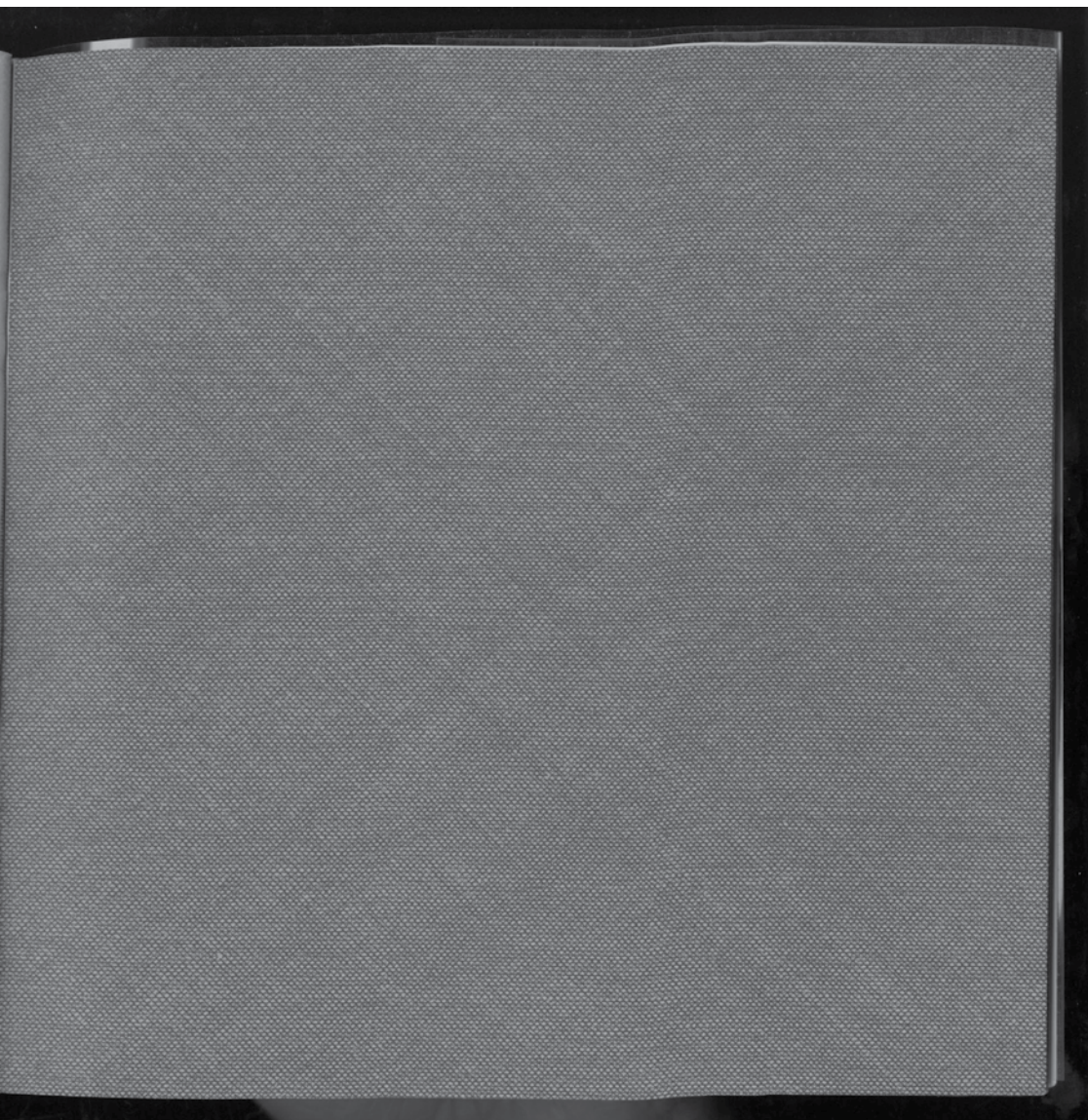




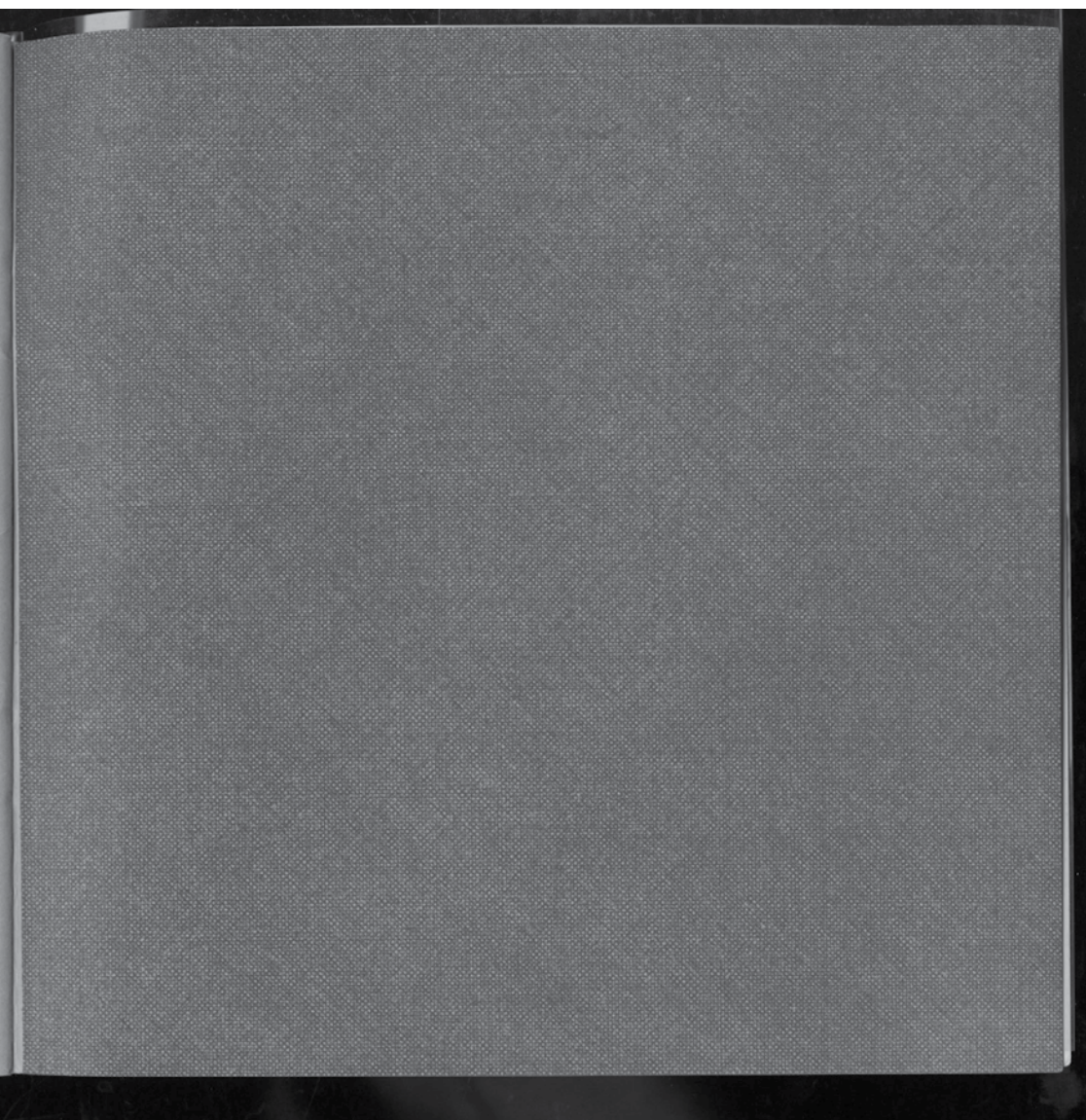








1234



Published by Studio International 37 Museum St London WC1, printed in Great Britain by W & J Mackay & Co Ltd, Chatham, Kent

© Copyright Sol Lewitt 1969



