

ECHO-LOGY

ALLAN KAPROW

ECHO-LOGY



1

carrying some downstream water
a distance upstream

bucket-by-bucket

pouring it into stream

transferring a mouthful of upstream water
a distance downstream

mouth-to-mouth

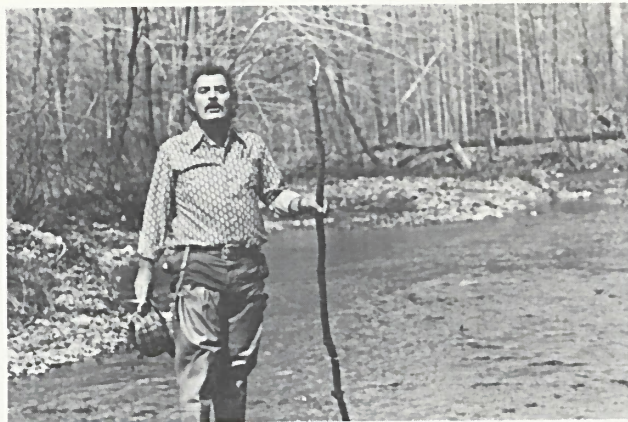
spitting it into stream



Photos: Lizbeth Marano







2

**sending a mouthed silent word
a distance upstream**

person-by-person

saying it aloud to the trees

**propelling a shouted word
a distance downstream**

person-by-person

mouthng it to the sky



3

**transporting a gas-soaked cloth
a distance upstream
(waving it gently in the air)**

person-to-person

waving it gently until dry

**carrying a bagged breath
a distance downstream**

each adding a breath

opening the bag to the wind

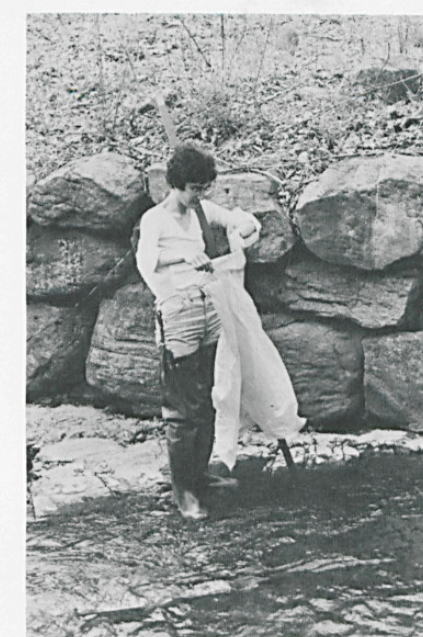




ECHO-LOGY is concerned with natural processes. Water flowing downstream is carried mechanically upstream, is dumped and flows back. Some is lost along the way. More water is transferred downstream mouth-by-mouth, loses oxygen, is mixed with saliva and is given back to the stream to be altered again. A word is silently formed, is recognized from a distance and is passed in that manner upstream, changing its identity, and is spoken to the trees. A word shouted from person to person, so loudly as to be misunderstood, rushes downstream similarly and is silently conveyed to the air. A gas-soaked rag is evaporated in stages on its trip upstream, becoming relatively clean as it gives its fumes to the atmosphere and further chemical change. Human breaths are collected and conducted downstream by hand. Small bits escape. The growing bagful becomes stale and the container is then released to the winds. The movement is simply back and forth.

ECHO-LOGY was carried out by a small group of persons moving in the water of a stream in Far Hills, N.J. on the weekend of May 3rd and 4th, 1975. It was commissioned by the Merriewold West Gallery.

9/74-4/75



ALLAN KAPROW

Published by D'ARC PRESS, N.Y.C.
© Allan Kaprow 1975