





# OffLine

A retrospective: 1990-2003



## Acknowledgements

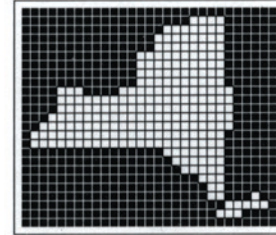
After thirteen years OffLine has many individuals to thank. To the many artists, video contributors, TV stations, arts organizations, and friends we sign off with gratitude.

A special thank you to all the funders who have generously supported Offline over the years including the National Endowment for the Arts, the Technical Assistance Program, the Electronic Media and Film Program of the New York State Council on the Arts, the Experimental Television Center's Electronic Arts Grant Program, the New York Foundation for the Arts, Visual Studies Workshop, and Media Ithaca. Your support has brought unique art forms into the homes of countless thousands. We feel very proud of that.



Carmelita Tropicana

State of the Arts

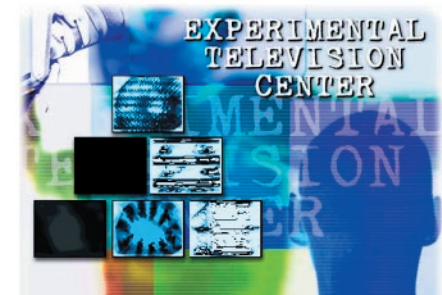


NYSCA



NATIONAL  
ENDOWMENT  
FOR THE ARTS

VISUAL  
STUDIES  
WORKSHOP







For the artists of New York State.

# Introduction

During its thirteen-year existence OffLine grew from a small cable arts program in Ithaca, NY to a regional, national, and eventually, international entity. Its list of funders grew along with its vision for new arts. More than seventy artists were interviewed and more than four hundred independent works were exhibited. This book is a summary and synthesis of its history.



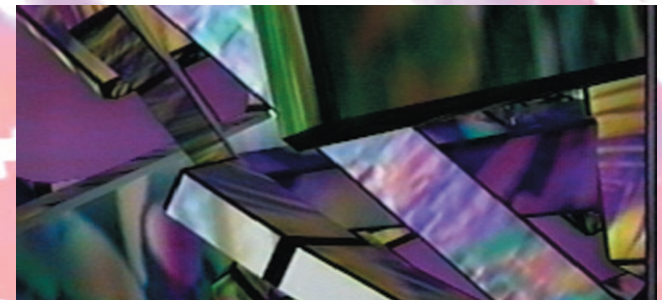
"That's the kind of video I like."  
Daniel J. Martinez

"It's an alien type of situation."  
Celia Muñoz

OffLine began as an experiment.

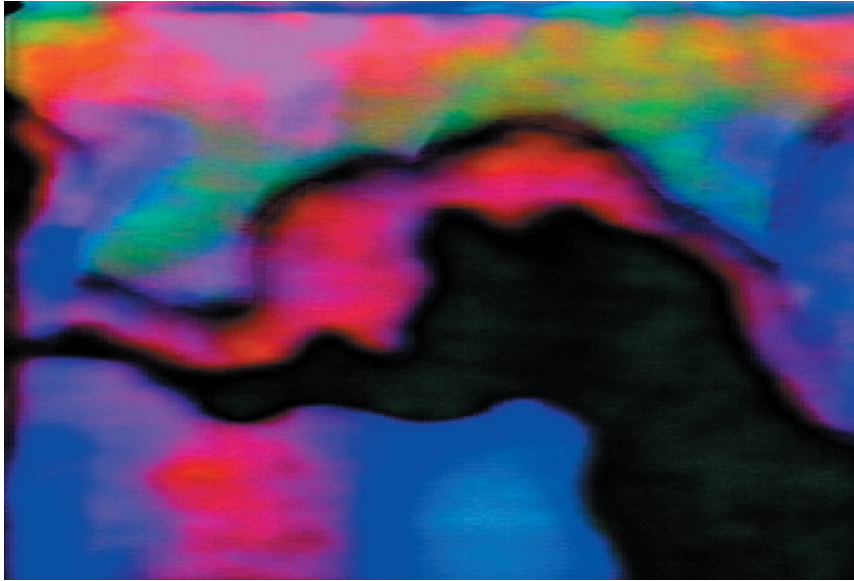
OffLine was a national arts organization, cable television screening, and distributor of independently produced films and videos. It distributed its television series around the country via public access cable television channels. The program aired for an estimated audience of ten million viewers in over one hundred cities nationwide and served as a creative conduit for numerous national and international screenings, arts organizations, micro-cinemas, festivals, netcast providers, and artists.

*With the Good Witch*  
Joel Baird and  
Rick Phillips



*Continuum* Maureen Nappi





*Nightflower Whose Family*

OffLine's cable television screenings showcased over four hundred works by independent media producers internationally. The program focused on the diverse forms of the artistic experience. All creative strategies to video and film were encouraged. Genres included experimental, art, computer graphics, animation, music videos, performance art, experimental documentary, and short narrative.

OffLine also featured a wide variety of interviews with artists. Artists included Philip Glass, Steina Vasulka, Dee Dee Halleck, Craig Baldwin, Malachi and the Mass Resists, the Second Hand Dance Company, George Rhoads, Flava Flav, Alien Farm, Tall, and many more.

OffLine received funding from the National Endowment for the Arts, the Technical Assistance Program and the Electronic Media and Film Program of the New York State Council on the Arts, the Experimental Television Center's Electronic Arts Grant Program, the New York Foundation for the Arts, Visual Studies Workshop, and Media Ithaca.

## 1990

OffLine began in an effort to bring together the works of artists and student filmmakers in Ithaca, New York during the summer and fall of 1990. The project was spearheaded by Greg Bowman, then Access Facilitator of Cable 13, a public access television studio in Ithaca, New York. Bowman's work as cablecasting operator for the access channel inspired the idea. He noticed that openings in the program schedule matched opportunities to fill them, because he had at his disposal a variety of short videos that could fill the gaps, and in a style reminiscent of early MTV without VJs or commercials. So he came up with the idea to create a single program that brought these videos together, organized around various artistic and other content themes. It first aired on September 1, 1990.

The half-hour program exhibited video and film art shorts by a number of student and local producers. It was curated into bi-weekly shows that aired until December 1990. It included collaborative work between Bowman and future co-producer Scott Noegel.



*Reefer Madness*  
Kenneth Thomas



*Viva Las Vegas* Bill Davis

*Home Is Where the Heart Is* Sian Evans





# OffLine

Creative and  
independently  
produced videos



OffLine is a cable access television series of works by regional and national artists. The show's format is experimental, airing weekly on access channels around the country. Submissions should not exceed 20 minutes in length. Longer works will be considered for serialization. Formats: 3/4", SVHS, or VHS. Please include sufficient postage for return of tapes.

Off  
Lin  
e

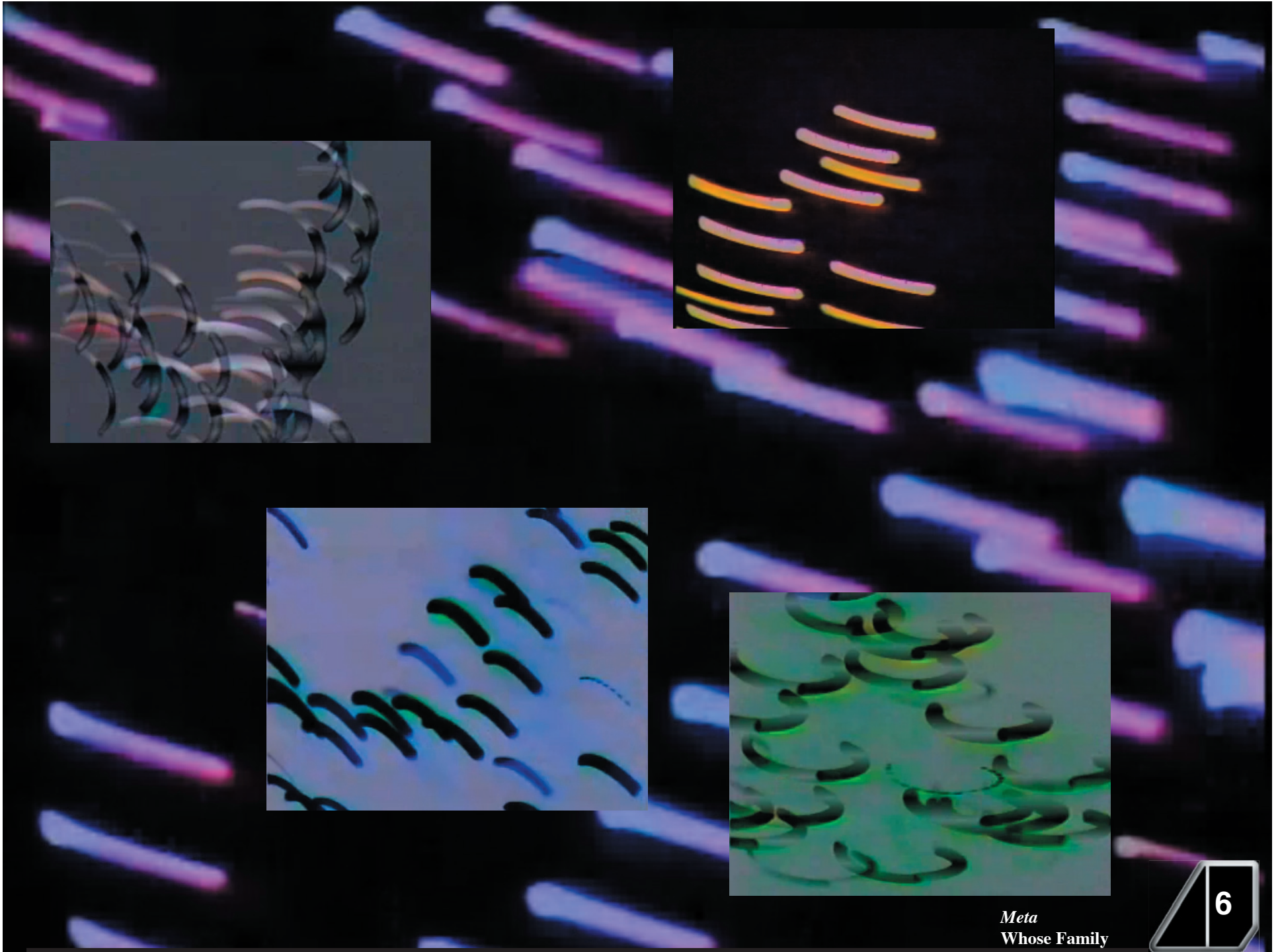






*Mirror Man*  
Andres Tapia-Urzu





*Meta*  
Whose Family



In 1991 OffLine produced a special four-hour television program in cooperation with another local video anthology program, Video Underground, which was produced by Paul Belodeau. The OffLine/Video Underground Marathon aired on April 29th, 1991, and included a live musical performance and interview with Scott Noegel of Alien Farm. The show presented many videos and films collected between 1990 and 1991. A presentation of film and performance work by New York City artists Bradley Eros and Jeanne Liotta highlighted the latter part of the program (due to the strong sexual theme of their work, it aired later after 10:00pm in a segment subtitled "After 10").

## Media Ithaca grants

Media Ithaca announces four winners of the Regrant Awards. Each winner will receive \$400 for a specific film or video project. The winners are:

- Greg Bowman — assistant access coordinator at the PEGASYS Community Access Studio — will develop "Off-Line," a nine-episode video series featuring local and regional experimental work.

*Ithaca Journal*, Arts & Leisure, July 1st 1993

# 1993

From 1990 to 1993 Bowman and Noegel spent significant time creating videos for Alien Farm's latest CD release, *Now Fix Me*. With the accumulation of these new videos and other works created at Cable 13 (PEGASYS), the two artists decided to present these works via the television medium. While attending an Upstate Media Conference in Syracuse, NY in early April 1993, Bowman met Branda Miller, a Professor of Video at Rensselaer Polytechnic Institute in Troy, NY. At that time Miller was producing a series of video art works for the graduate program in Integrated Electronic Arts at Rensselaer (iEAR). Miller was looking for new distribution venues for her program *hOUR iEAR*. And so *hOUR iEAR* aired on the Ithaca channel in exchange for distributing a new version of OffLine starting in the fall of 1993.

With new energy from the collaboration with iEAR, Bowman and Noegel created a new hour-long series of programs under the name "OffLine," as in the 1990 series. However, they added interviews with local artists. The first season of OffLine featured interviews with a number of well known area artists. The Second Hand Dance Company, composer David Borden, and future success story designer Josh Owen all featured during the first season.

Offline also received a grant from Media Ithaca, which annually awarded five grants as part of a Regrant program funded by the New York State Council on the Arts (NYSCA). With the funding in place to cover basic operating costs OffLine, as an organization, is born.



*5 Part Inventions* Stan Bowman

SKOK Whose Family





## VIDEO Public-access television walks on the wild side

It's off-beat. It's off-center  
It's 'OffLine.' And it's on  
Channel 13 Monday nights.

By ANDREA ROMEO-HALL  
Special to the Journal

**G**RAB your clicker, a new show is coming to cable access. Starting at 8 p.m. Monday, Channel 13 will part those familiar blue curtains and venture beyond the beloved talk-show format.

The show is called OffLine and it's about art — the broad definition including music, dance, poetry, visual art, performance art and experimental film and video. It's about delivering these art forms — and the people who create them — to the public via weekly, one-hour episodes.

OffLine is co-produced by Greg Bowman, Channel 13's assistant coordinator for community access, and Scott Noegel, a Cornell University graduate student in Near Eastern Studies. The show came about because the producers are on a "quest for the alternative, to show art work that has not gotten exposure elsewhere."

The best way to describe the program — which is more offbeat than one might expect — is to say that each episode is a string of collected art works.

Season highlights will include:

- Weekly features by Bowman and Noegel, documentary-type segments interviewing an artist or group on location;
- Visits with Binghamton's Second Hand Dance company and Ithaca's avant garde composer David Borden;
- A weekly movie from the archives of Cornell Cinema and works by George Kuchar; and
- A disturbing, four-part series by Peter Greenaway called "TV

### OffLine

What: Mixed-media arts show

Where: Channel 13

When: Premieres at 8 p.m. Monday; a new episode runs every other Monday through January and is repeated the following week

To submit videos: write to Greg Bowman, 203 Pine Tree Road, Ithaca

Dante."

But the majority of airtime is saturated by tapes independent video makers send to the show. There's no host or "veejay"; the viewer floats through the mind fodder, an ocean of images. Brief appearances of the OffLine logo mark beginnings and endings to the often structure-free pieces.

The viewer should not expect this series to be entertainment in television's usual, spoon-fed sense. The experimental sections of OffLine are more like having an art gallery — or video art gallery — in the living room.

For the uninitiated, experimental video can be trippy, like watching abstract painting in motion — sometimes set to music, sometimes computer generated, seldom plot driven. It could be animation. It could be (in fact one video is) a man sitting in a room saying "I'm sorry," over and over.

If this program sounds familiar to our local airwaves, it's because OffLine is actually a resurrection of an earlier, 1990, effort by Bowman. At that time, the series ran for one season, then was put off because Bowman wanted to focus on his own creative film and video work.

Bowman's interest for OffLine was rekindled when he collected a lot of new videos to air, and he got the brainstorm to expand the show



Photo by ANDREA ROMEO-HALL

**ACCESS ACES:** 'OffLine' co-producers Greg Bowman and Scott Noegel pose in the control room of the Channel 13 public-access television studio.

beyond Ithaca. Going national, by including non-area artists and networking to get the series on other access stations (so far it's booked in Albany, Schenectady, Troy, Rensselaer, and Rochester, plus Pittsfield, Mass., and San Francisco, Calif.) got the project going again.

"We network," explains Noegel, "to get enough material to put out more episodes, and to receive enough grant money to cover expenses. There is no profit."

Both producers are artists themselves. Bowman, a native Ithacan, studied theater arts at Cornell. In 1986, he took ACC's training classes and over the next several years, started experimenting with video. Today, he also composes music and does animation, funneling it all together with video. His own work, including a video called "Convention Cut Up," is included in the OffLine series.

Noegel studied fine arts in his native Milwaukee, Wis., in the early '80s, and today considers himself a "multi-media artist." His band, Alien Farm, based in San Francisco, is featured in an interview on OffLine and several of the band's videos sprinkle the season.

One of the things Bowman and

**'We let artists be interviewed any way they want. If they want to sit in the middle of a field and talk into a microphone, we'll do it.'**

— Scott Noegel,  
'OffLine' co-producer

Noegel love is going on the road for the feature segments they produce.

"We don't necessarily look for big-name cities," Bowman says, "but rather try to focus on places where specific art is happening."

Getting to talk with people in their own environment makes them more at ease, Noegel adds.

"It's more aesthetically pleasing than the talk-show format," Noegel says. "We let artists be interviewed any way they want. If they want to sit in the middle of a field and talk into a microphone, we'll do it."

And Noegel says it's interesting to "discover the common threads that tie the artistic community together."

For example, he says, many

artists want to make art that simply frees them up, rather than being focused on making a so-called important work. Also, Noegel was struck by how much the artists enjoy their work.

"And then there's the common thread of how important coffee is," Noegel adds, amused. "One visual artist keeps having it show up in his art."

Bowman says the best part is being able to meet so many creative people and give them an environment in which to show their pieces.

"We try not to get into judging the work that is submitted," Bowman says. "As long as it comes across technically, it will probably get shown."

□



Peek-a-Boo Eun-Ha Paek



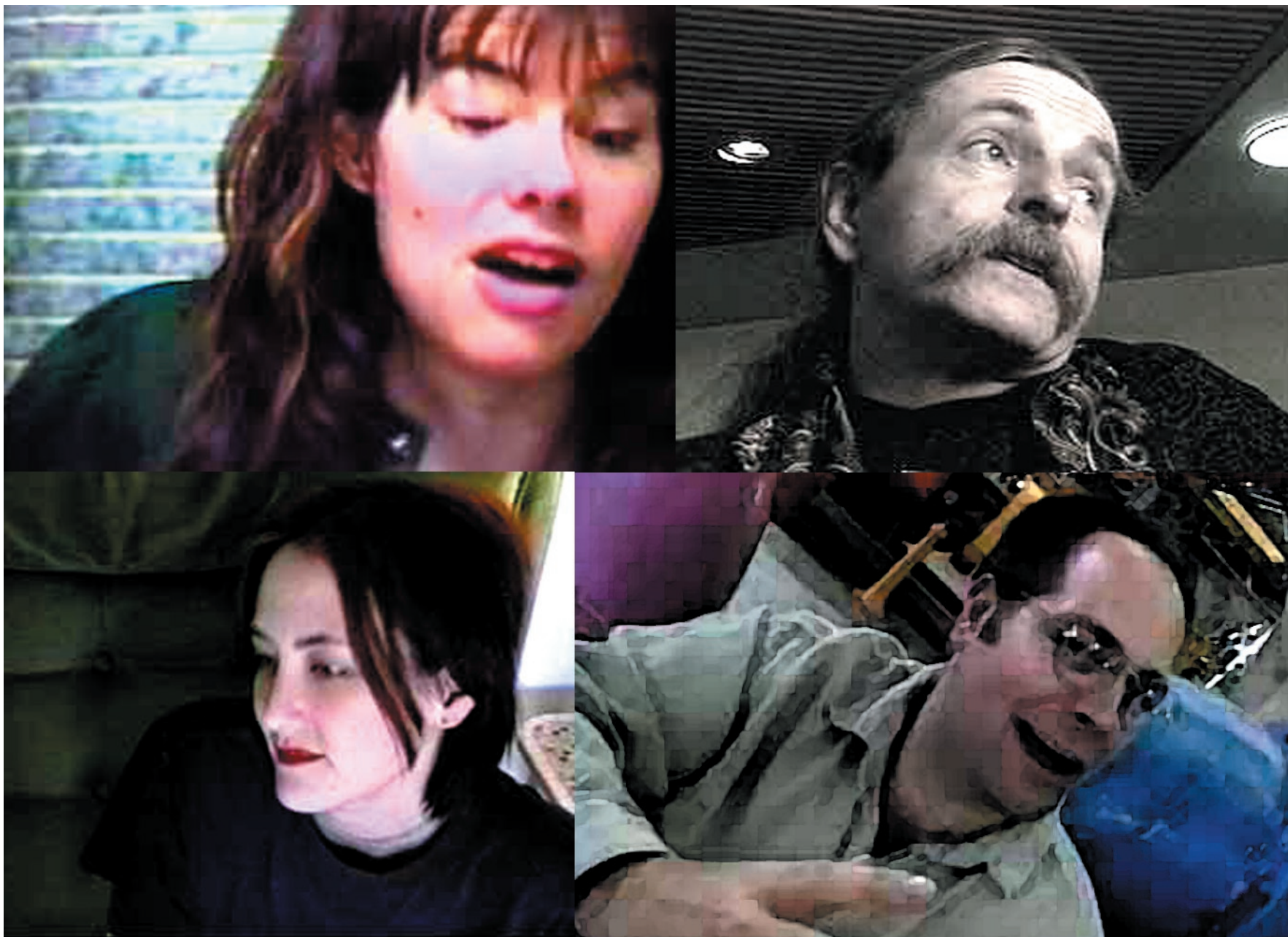
Baby Killer James Shepard



Euphaedra Erik Deutschmann



Artist expressions: OffLine interviews with:  
Greta Snider, Krzysztof Wodiczko, Yoko Ott, and Frank Harlan







# 1994

With the success of an initial season in the Ithaca area, it was realized that there were other opportunities for exhibition on public access channels in other cities regionally in upstate New York. Cortland, Binghamton, Syracuse, the Capital District, and Rochester quickly became new venues for OffLine, and they were received with great enthusiasm by both the access stations and the communities. It became apparent that there was a growing demand for OffLine's diverse arts programming in a public access environment. At that time, public access channels were dominated by live talk shows and religious programming. The producers of OffLine felt that this was an opportunity for the arts.

The producers of OffLine then consulted with the county-based Community Arts Partnership of Tompkins County and filed for a "New York State Charities Registration" to become a non-profit organization in New York State. Richard Driscoll, President of CAP, provided invaluable assistance.

In January 1994 OffLine filed its forms with the State, formed a board of directors, and began its official life as an arts organization. The first funding OffLine received from NYSOA came from a special program called the Technical Assistance Program. With an increased funding base OffLine expanded the number of cities that had aired OffLine. It also distributed publicity brochures and a "Call for Works."





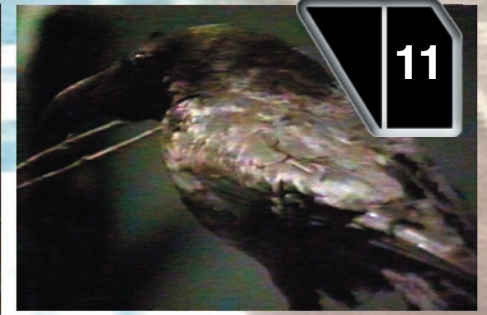
*The Castle is Burning* Daniel J. Martinez



Ronald Gonzalez



Amalia Mesa-Bains



*Nimbus of Tears* Ronald Gonzalez

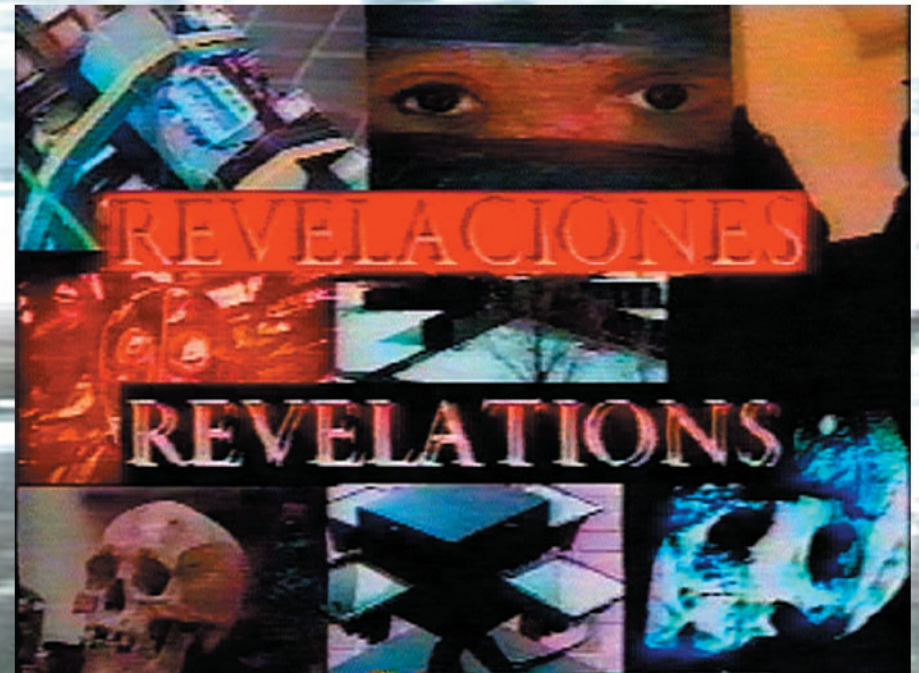
## Revelaciones

In the fall of 1993, a unique art exhibit took place at the Herbert Johnson Museum of Art at Cornell University. Latino and Hispanic art took focus in OffLine's cameras in a special presentation on the site-specific installation *Revelaciones/Revelations: Hispanic Art of Evanescence*. OffLine followed eight artists around the museum and the Cornell campus over the course of three weeks documenting the process of creating their pieces and talking with them about their art. The nationally acclaimed artists involved: Amalia Mesa-Bains, Ronald Gonzalez, Maria Brito, Celia Alvarez Muñoz, Daniel Martinez, Raphael Montañez, Rimer Cardillo, and Gronk. The result was an hour-long special program that weaved through the daily experiences of these artists, catching glimpses of pieces in progress and the changes that occurred.

Daniel J. Martinez



*Vanitas: Evidence, Ruin, and Regeneration*  
Amalia Mesa-Bains







Rimer Cardillo



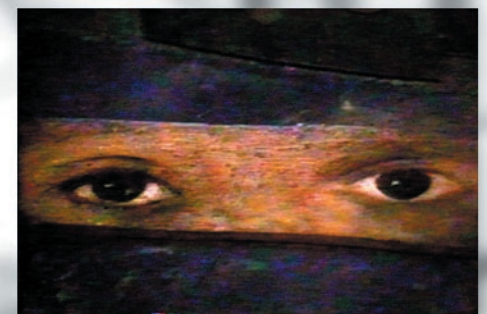
*Explosive Ideas-Books and Bombs*  
Raphael Montañez Ortiz



*La Quebrada de los Cuervos* Rimer Cardillo



Celia Muñoz



Installation by Maria Brito



Maria Brito

Raphael Montañez Ortiz



Untitled mural by Gronk

Gronk



12 Arts & Leisure, Thursday, April 14-21, 1994

# BEST BETS

**OffLine airs 'Revelaciones' spot**

The Ithaca-produced and nationally distributed art series **OffLine** premieres the special presentation of "Revelaciones-Revelations" Sunday on Channel 13.

"Revelaciones-Revelations" is a documentary on the controversial site-dependent installation held at Cornell's Johnson Museum in November and December of 1993. The episode features in-depth interviews with each of the artists involved with the exhibit, as well as footage of the student protests and takeover of Day Hall sparked by the exhibit.





*Death and a Salesman* Joe Grisaffi

Michael DiMilo  
interview  
“in the field”

*Your Guilt Is Our Guilt* Timothy Johnson





# 1995-1997

OffLine's interest in airing the program in other cities outside New York naturally grew. The list of cities on OffLine's "map" soon included Minneapolis, Washington D.C., Philadelphia, Seattle, Santa Fe, Iowa City, San Francisco, and West Hollywood.



*Jack and Jill* David Hodes



*AmBUSHed* Jared Katsiane

In 1995, after finishing his Ph.D. at Cornell University, co-producer Noegel moved to Seattle to take a post-doctoral position at the University of Washington. This move facilitated OffLine's expansion into other regions and provided a backdrop for Noegel's co-founding of the Seattle Independent Film and Video Consortium. The SIFVC soon became one of Seattle's most visible advocacy coalition of arts groups and organizations. Working at a distance, Bowman and Noegel continued to produce the series.

The new influx of films from the West Coast bolstered Offline's already strong showing of New York work.



OffLine launched its web site in June of 1996, a time when web sites, it seemed, were still a "phenomenon." The site contained extensive information about OffLine's history and exhibition schedule.

OffLine was experiencing a fast and steady growth in exhibition venues. New sources of funding expanded its distribution and publicity efforts. OffLine now was able to pay artists for showing their excellent works on the show. In addition, artists were seen on television throughout the country. In 1997 OffLine then received a grant from the National Endowment for the Arts with the support of the Community Arts Partnership.

With an ability to pay artists and an increased emphasis on web-based publicity and information the NEA awarded OffLine a two-year project contract. OffLine's ensuing years were extremely productive and innovative.



*Emergence Michael Shuman*

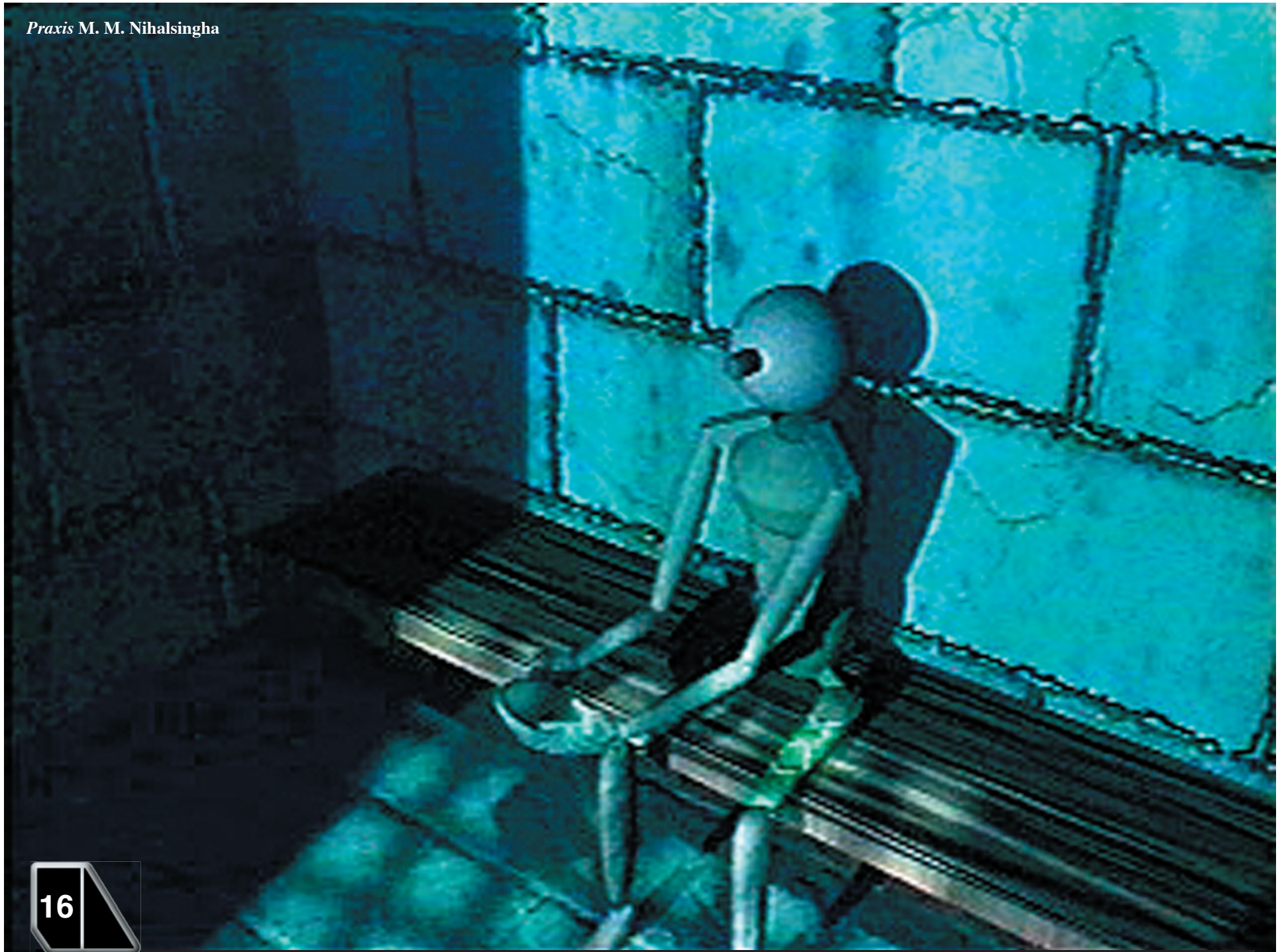
For immediate release,

3/12/94

#### ARTS CABLE SERIES EXPANDS

OffLine has grown. The locally produced and nationally distributed cable series dedicated to the arts has now become a non-profit media arts organization. Producers Greg Bowman and Scott Noegel are excited by the change. "The move enables us to achieve still higher standards of technical quality and to pay our contributors more than we have in the past by allowing us to apply for larger available arts funding," Bowman remarked. Noegel added, "The new status both gives corporate sponsors a better incentive for investing in the program and increases our distribution exponentially. This comes at a propitious time for us, on the eve of a promising Spring season full of unique high quality pieces from all over the country." Bowman continued, "This will be a benefit to our contributors and to the artists which we feature. The new potential for exposure is incredible!" To celebrate the change, the producers have moved the series, which airs locally on channel 13, to Sundays at 8:00 pm.







### Where we air...

OffLine airs on public access channels in the following locations. If your community is not listed here and you'd like to see OffLine there, contact us to find out how.

<u>City</u>	<u>Channel</u>
Ithaca, NY	PEGASYS
Cortland, NY	Empire Cable
Binghamton, NY	Time Warner
Syracuse, NY	Adelphia Cable
Rochester, NY	RCTV
New York, NY	NYU-TV
Brooklyn, NY	Spring Creek TV
Milwaukee, WI	MATA
Minneapolis, MN	MTN
San Francisco, CA	SFCTC
Mexico, MO	Mex TV
Missoula, MT	MCAT
Washington D.C.	DCTV
Mamaoneck, NY	MLTV
W. Hollywood, CA	W.H. Public Access
Seattle, WA	TCI
White Bear Lake, MN	SCC
Santa Fe, NM	PEG Access TV 6
Tampa, FL	TEC
Madison, WI	WYOUCommunityTV
Philadelphia, PA	DUTV
Tucson, AZ	Access Tucson
Muncie, IN	

**OffLine** welcomes creative and independently produced videos. The hour long show airs on public access channels around the country. Submissions should not exceed 25 minutes in length. Longer works will be considered for serialization. Formats: 3/4", SVHS, Hi8 or VHS. Include sufficient postage for return of tapes.

**OffLine** has received funding from the Technical Assistance Program and the Electronic Media and Film Program of the New York State Council on the Arts. **OffLine** also has received funding from the Experimental Television Center's Electronic Arts Grant Program.



**OffLine**  
203 Pine Tree Road  
Ithaca, NY 14850  
607-272-2613  
INTERNET:  
[offline@lightlink.com](mailto:offline@lightlink.com)  
<http://www.lightlink.com/offline>







Paul D. Miller aka DJ Spooky That Subliminal Kid

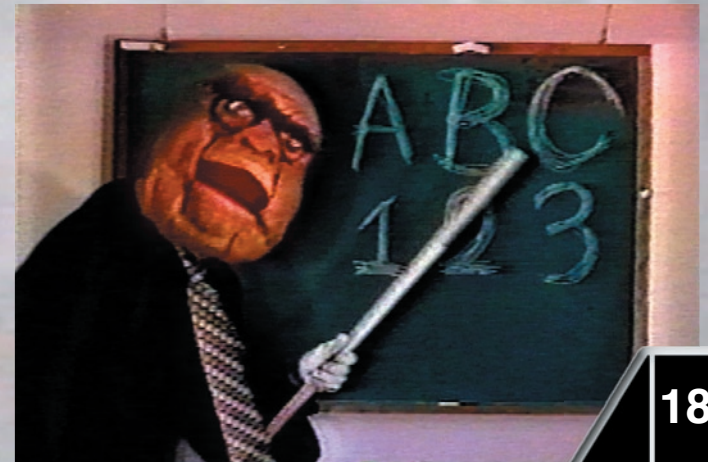


Gardner Post, Emergency Broadcast Network

## 1997-1999

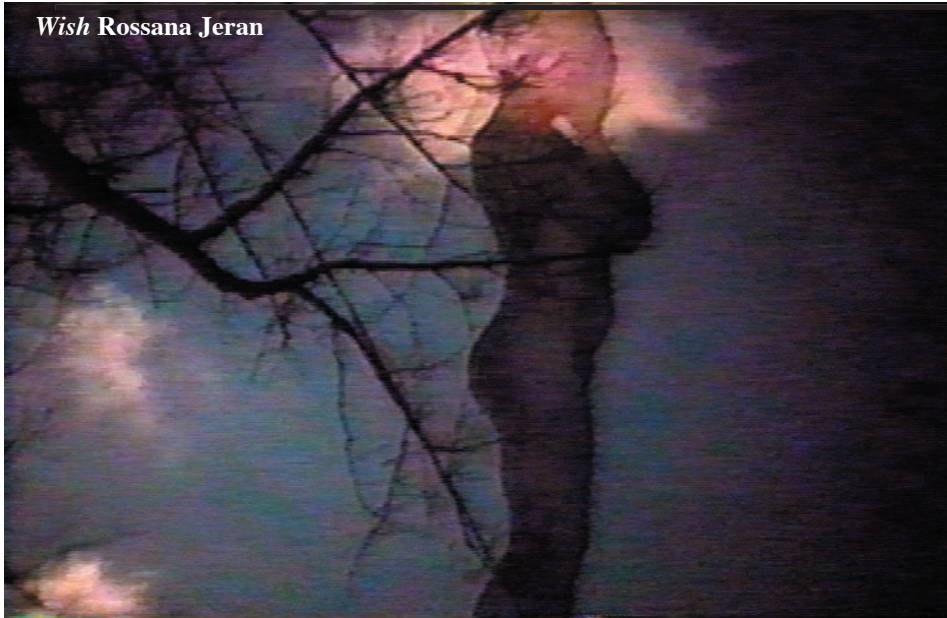
From 1997-1999 the Electronic Arts in the iEAR program made OffLine part of its regular programming. This also created access to a variety of visiting artists in iEAR's Electronic Arts Performance series and led to a new series of interviews with Chip Lord, Krzysztof Wodiczko, Troika Ranch, DJ Spooky, and Mark Hosler of Negativland, among others. Meanwhile Noegel was conducting interviews in Seattle with Artis the Spoonman, Joel Bachar, Lynn Basa, Frank Harlan, Takahiko Iimura, Yoko Ott, Mamoun Sakkal, Umo, and others, OffLine interviews became a more central part of the program.

*Liberty Beast Lev*

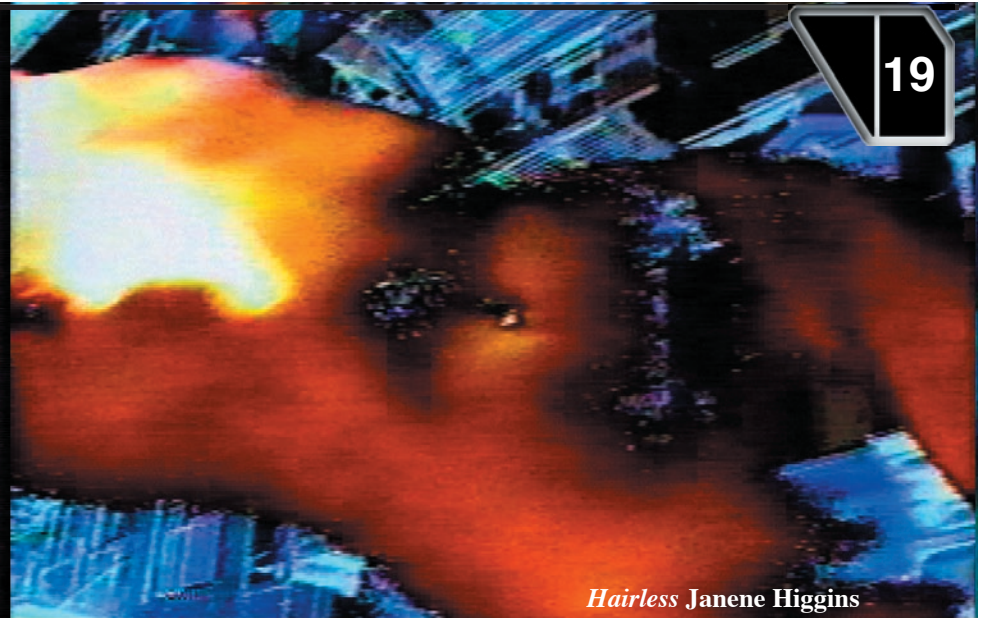




*Wish* Rossana Jeran



*Hairless* Janene Higgins



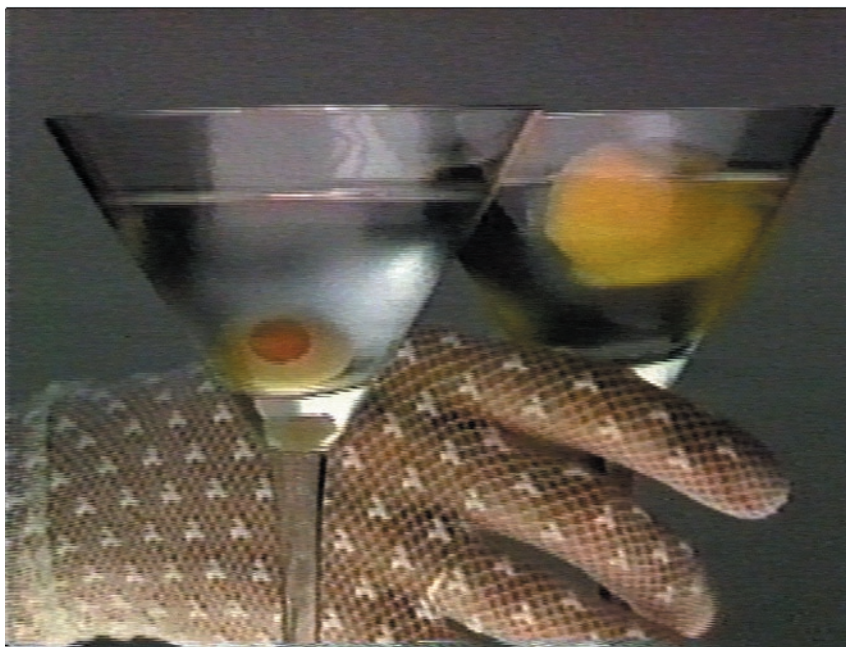
*She Said* Lynette Kessler







*Eat Hot Death* Trav SD



*Martini* Robert Jaye



# 2000

With the turn of the millennium, OffLine began video-streaming its programming over the internet. Its initial focus was on one of the cornerstones of its original program concept—its artist interviews. The fall of 2000 also marked OffLine's eightieth episode. Our hope was that the exposure of artists made possible by television would be made even greater on the internet. The year 2000 also marked the year of OffLine's final television season.



*Union Center Inheritance* Mary Flanagan



## OffLine Film Fest

[mail this to a friend](#)

LOCATION:  
Fentron Building  
2815 NW Market St  
Seattle

HOURS:  
Aug 14 Sat 2:00pm- 3:30pm  
6:00pm- 7:30pm

WEBSITE:  
[Official OffLine site.](#)

 **buzz**  
post your comments!

### editorial profile

To investigate film's complex relationship with its creators—and to kick off Ballard's Artfeast—OffLine Networks will present a screening of independent short works on the theme of art and industry. As an NEA-funded organization started in 1993, OffLine has supported independent film, video and digital projects by distributing them for screenings and through its public access show (on channel 29 every first and third Saturday at 10pm). The group's ethos is to provide "a cavalcade of diverse material," so expect an appropriately hearty meal for the senses in these eight shorts. The program includes an interview with kinetic sculptor George Rhodes about his giant pinball machines. Other works demonstrate the poetic aesthetics of machinery such as OffLine co-producer Greg Bowman's "Fulton St.," which crisscrosses train images with industrial sound, Anne Farrell's "Goddess and Machine," and music videos.

Modern art inventor and dada wizard Marcel Duchamp once marveled at an airplane and concluded that the value of art was in its twilight; the true modern medium of human ingenuity was in industrial technology. This provocation has launched a century of conversation, and while film was birthed from such marvelous mechanics, its function as art can be at odds with its maker. While the artistic sensibility of filmmakers has opposed industry as the foundation for humanity's decay, technological advance is also the hand that feeds it. OffLine's screening at Artfeast probably won't be the final, grand reconciliation, but will offer much food for thought. —Brian Goedde, citysearch.com contributor



*Checkmating* William Azaroff



# International Artists



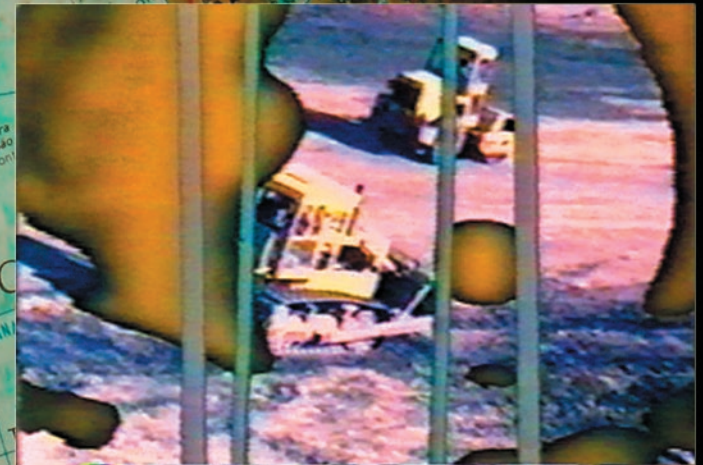
*William Shatner Lent Me His Hairpiece* Ken Hegan, Canada



*OffLine artist interview* Taka Imura, Japan



*Blue Gene Baby* Christine Robertson, United Kingdom



*7 Minutes To Live My Life* Dider Oustrie, France



# 2001-2003

These years were spent researching, collecting, and historicizing a variety of information about the artists it featured and creating a new web-infrastructure for the presentation and promotion of its interviews. Key features of the new site included:

1. An online library of interviews.
2. A home page for every artist interviewed that included a brief description of the artist and links to other relevant sites.
3. Search engines that allowed browsers to locate artist interviews and media artists exhibited on the OffLine television program.
4. Archives of the television program's content and distribution records.

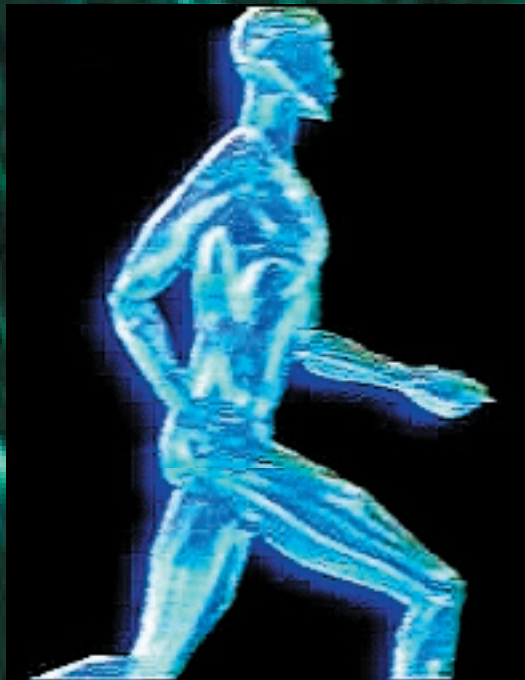
Artist interviews were scheduled and promoted three at a time at monthly intervals. This new emphasis allowed OffLine's producers a unique forum for presentation of the diversity inherent in the arts—one of the foundational goals of the Offline idea. OffLine also was represented at the 2002 National Alliance for Media Arts and Culture conference, held in Seattle.









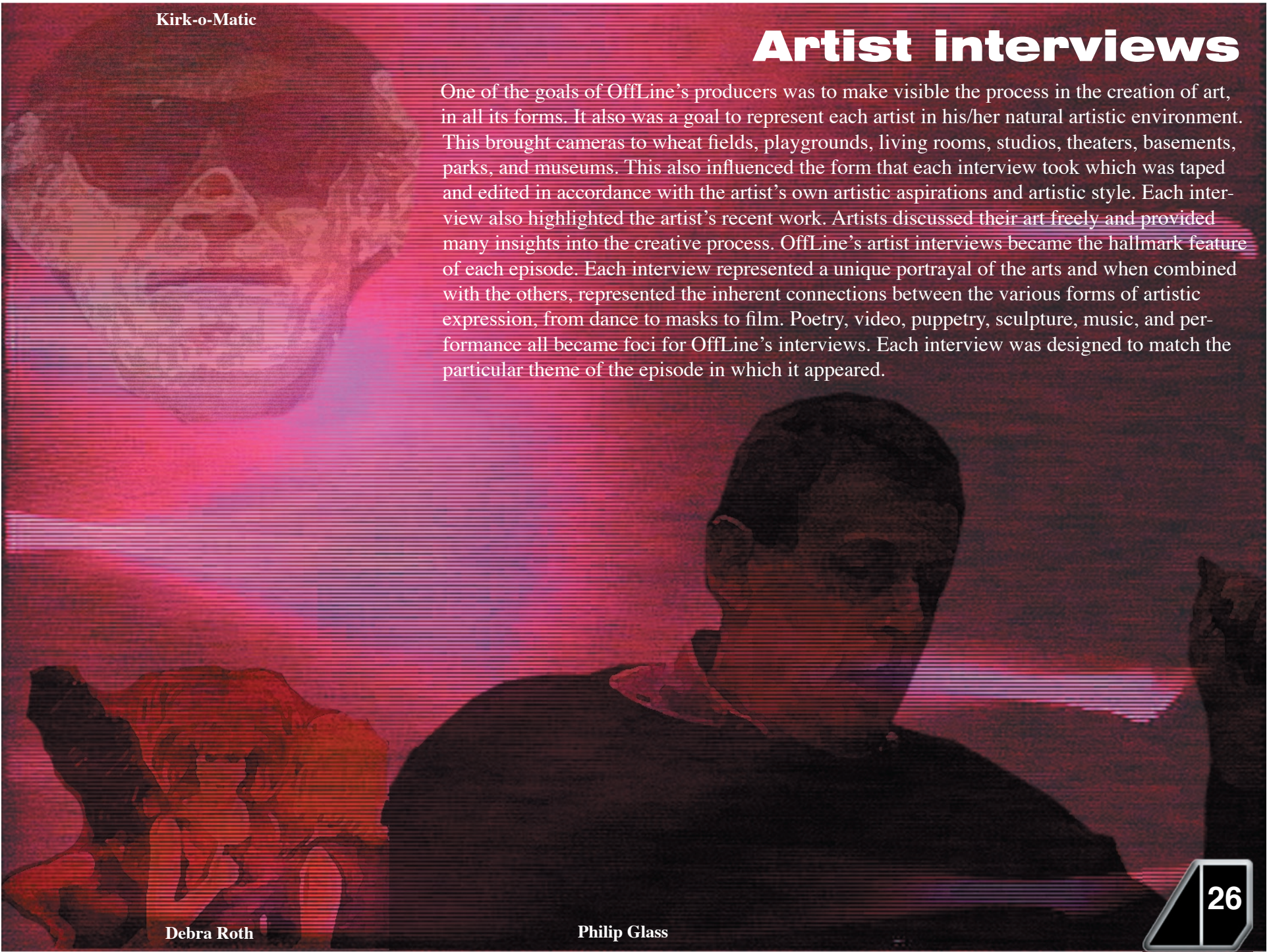


*Waterman Tom Ross*



*Malachi Blackchair Productions*





Kirk-o-Matic

## Artist interviews

One of the goals of OffLine's producers was to make visible the process in the creation of art, in all its forms. It also was a goal to represent each artist in his/her natural artistic environment. This brought cameras to wheat fields, playgrounds, living rooms, studios, theaters, basements, parks, and museums. This also influenced the form that each interview took which was taped and edited in accordance with the artist's own artistic aspirations and artistic style. Each interview also highlighted the artist's recent work. Artists discussed their art freely and provided many insights into the creative process. OffLine's artist interviews became the hallmark feature of each episode. Each interview represented a unique portrayal of the arts and when combined with the others, represented the inherent connections between the various forms of artistic expression, from dance to masks to film. Poetry, video, puppetry, sculpture, music, and performance all became foci for OffLine's interviews. Each interview was designed to match the particular theme of the episode in which it appeared.

Debra Roth

Philip Glass



### George Rhoads

"What you see is what you get. That's what I strive for. I don't want anything mysterious about it. I'd even open up the motors if I could see a way to do it so that they could study how it worked."



### The Pool

"Right now, people are less concerned with whether art fits into a particular category. I mean yeah, there's fads and movements. New York City is certainly like the headquarters of silly fads of what's supposed to be acceptable and all that, but I think that right now worldwide there's great stuff going on in the arts."



### Second Hand Dance Company

"When we first started out, not only did we make our own costumes but we had absolutely no money so we made our own costumes from things we found in the garbage. We are at a point now where we will go out and buy fabric at a thrift store!"







**Steina Vasulka**

"I like to show work in warehouses and kind of unsanctioned spaces. There is nothing wrong with a museum or gallery. The problem I have is that they want to be so nice to me and they say "we're going to give you the lobby" and I don't want the lobby. I want the last little quiet room where people can sit down and really stay with the work. The usual equation is one monitor and a thousand people. I would rather have a thousand monitors and a single person viewing."



**Dorothy Riester  
Stone Quarry Art Park**

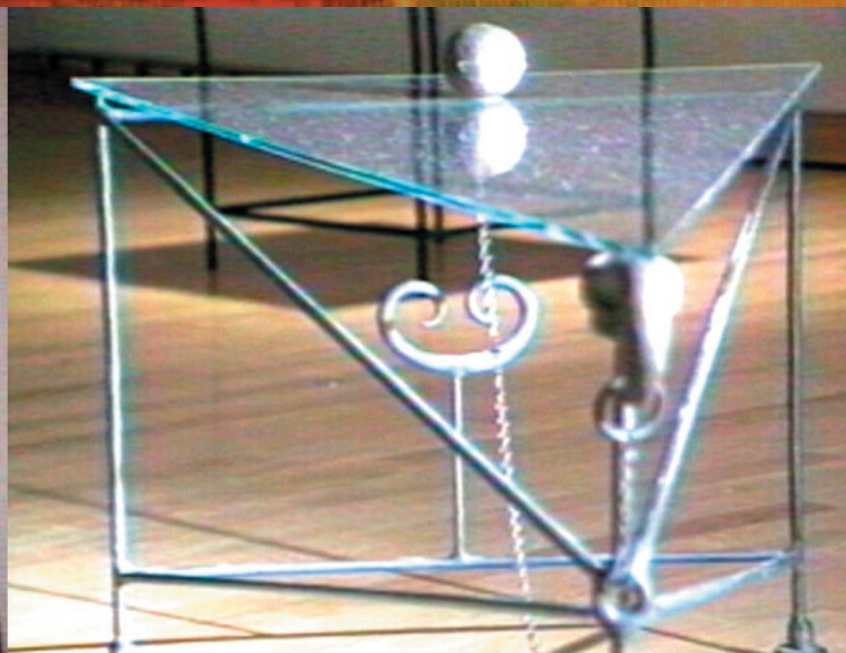
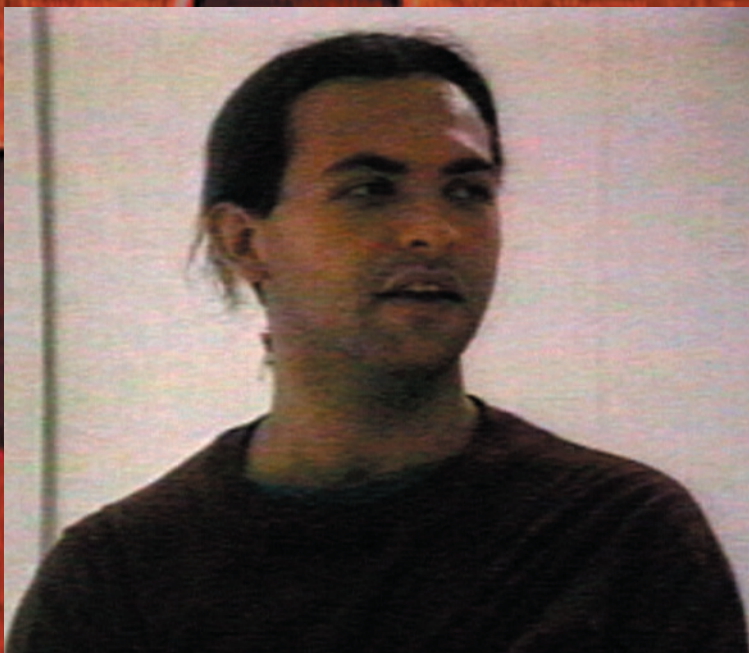
"If you believe in something, you do it. I think that every day should be live it to the fullest, do something and not just sit. I think that so many people live their whole life with never ever doing what they thought they would like to do. They would say 'I wish I had done this.' I think you should do. And some times if it doesn't work, but you've done it, so on to the next. I think that's how you should live."





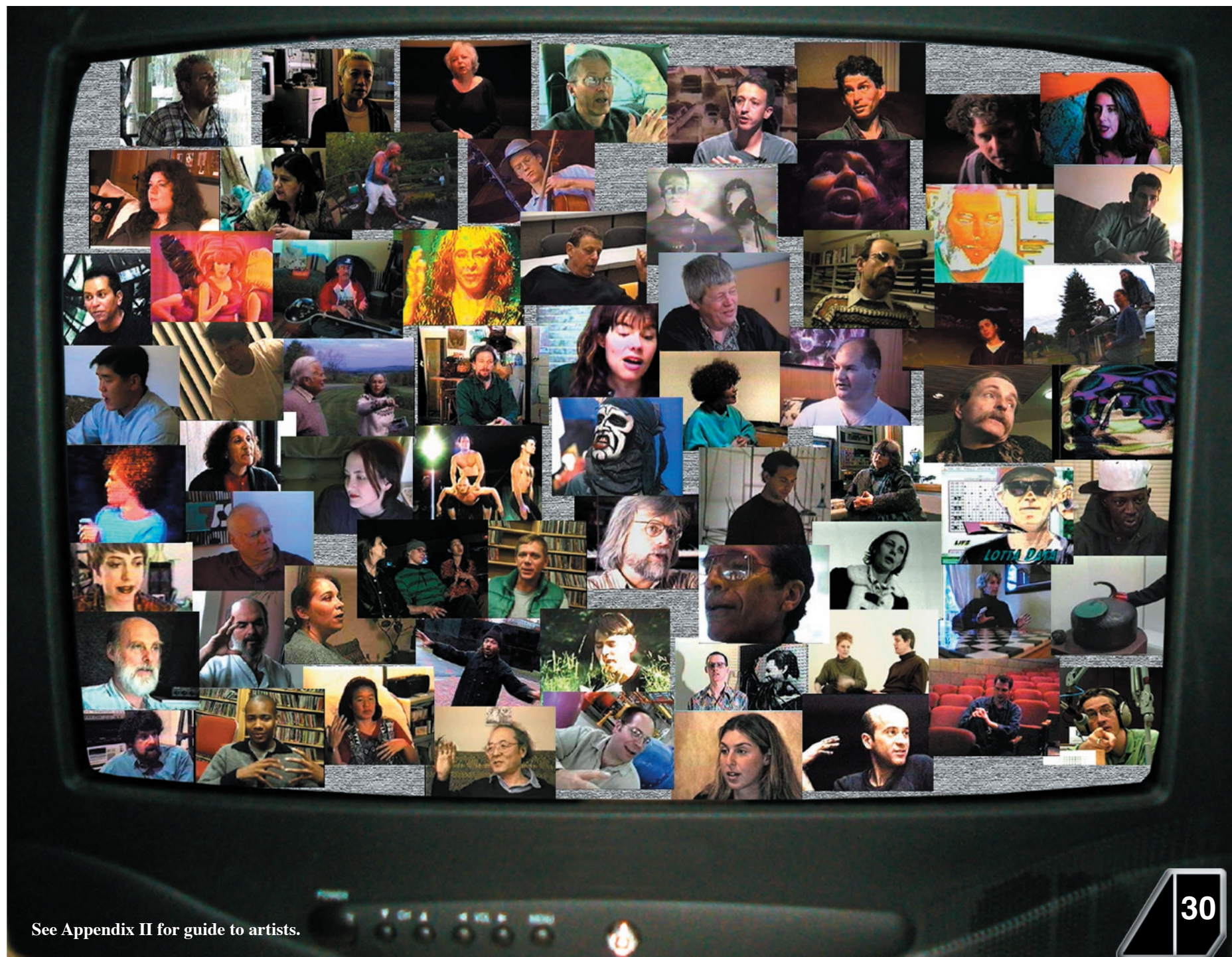
**Josh Owen**

"Sometimes you make pieces because you have something very specific to say. Sometimes you make pieces and they form a statement, and sometimes you just make pieces."

**Carolee Schneeman**

"I was very shy and frightened about this footage, whether it would be considered obscene. And what I didn't know was that this lab had a mafia porno production in the basement. So they thought I was just adorable with my 100 feet. They pushed the original fat collage though sprocket by sprocket on a foot pedal."



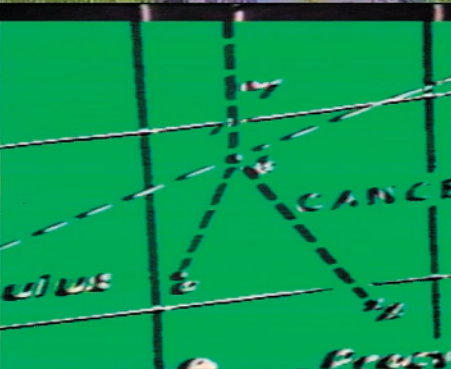
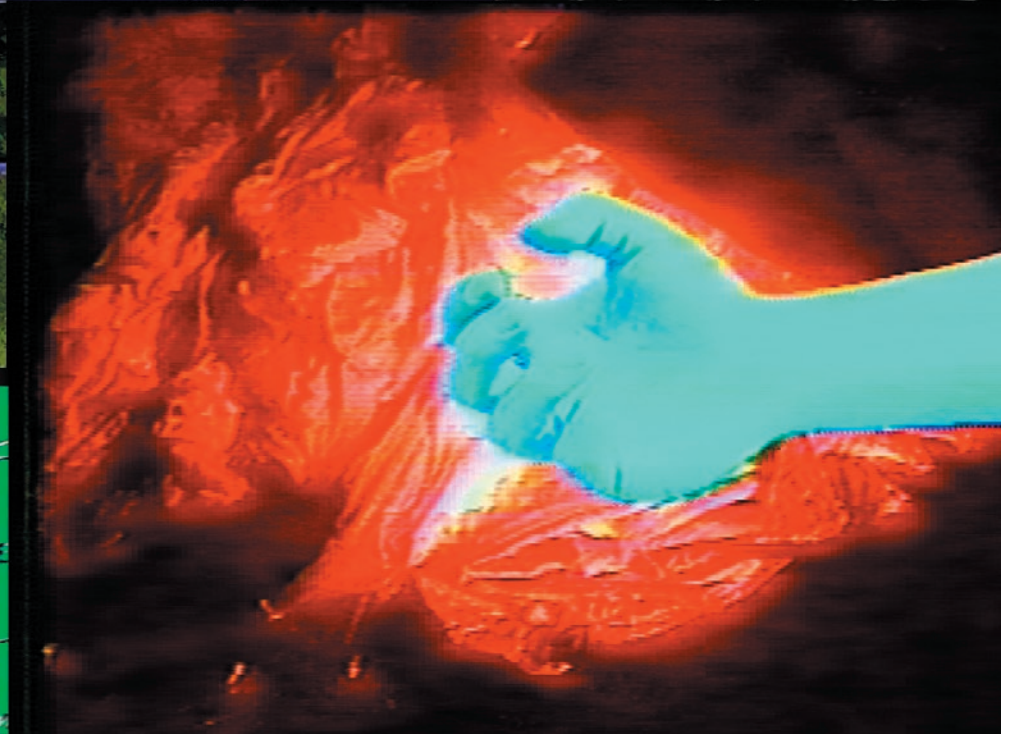
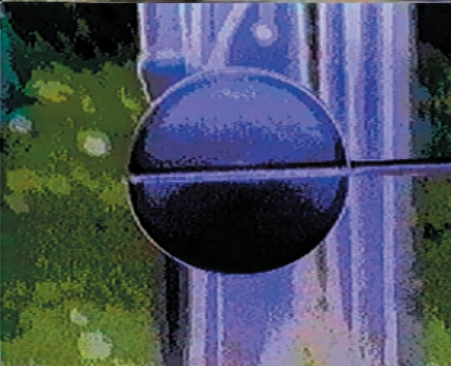
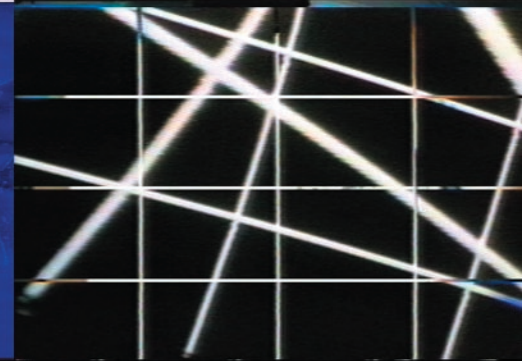
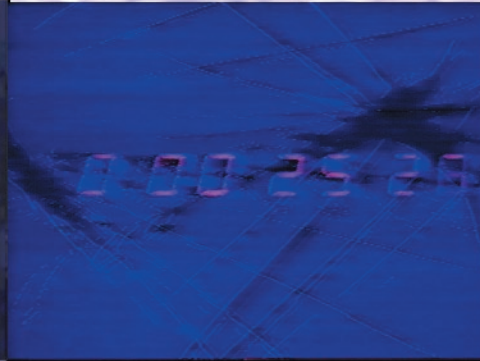


See Appendix II for guide to artists.

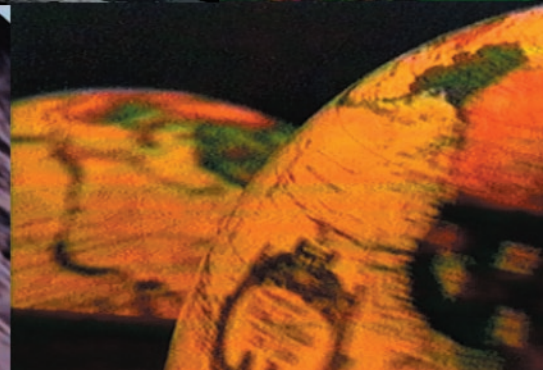
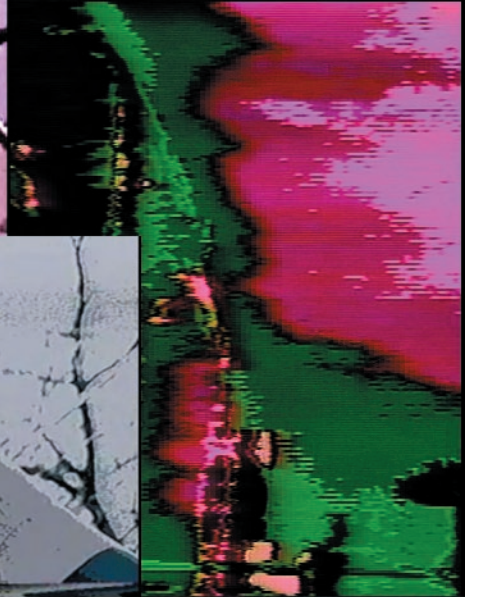
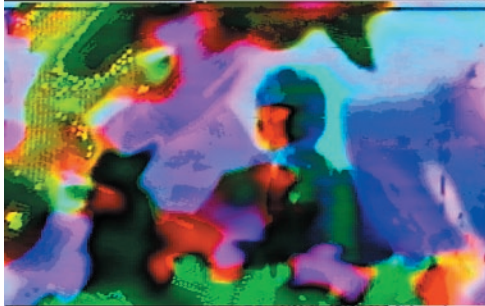
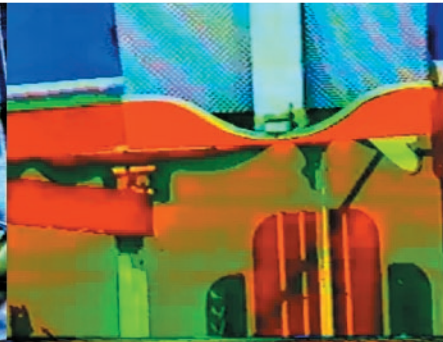
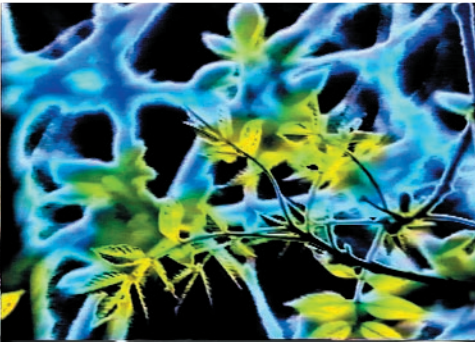
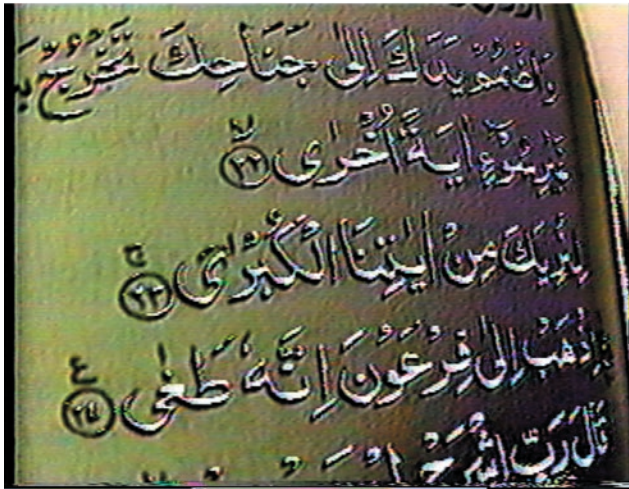


# The Blurbs

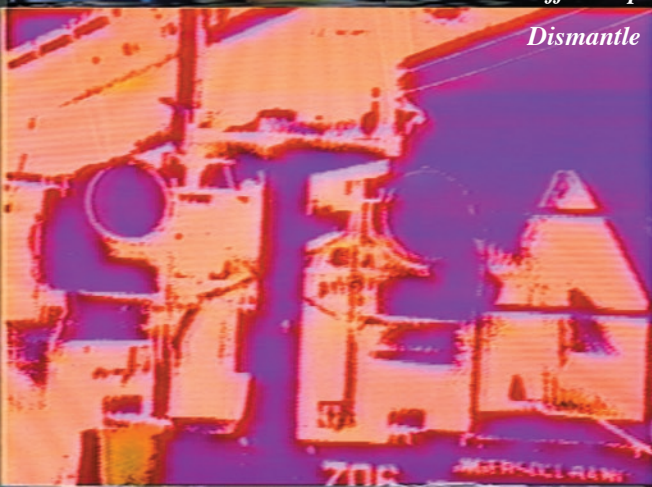
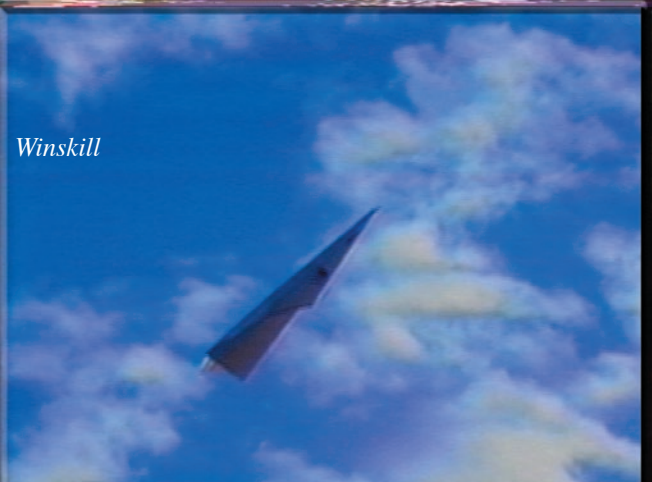
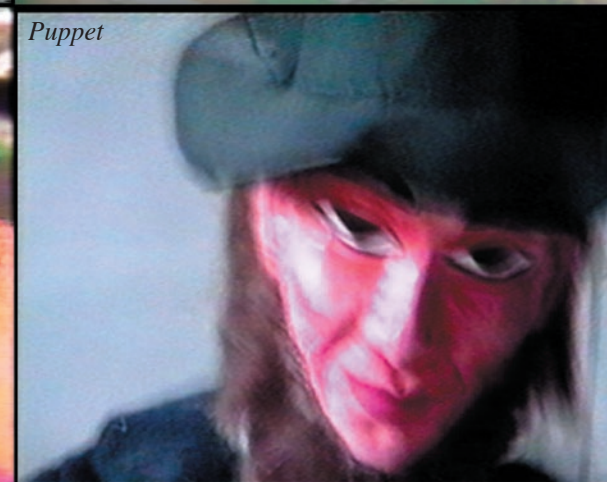
Appearing between each of the contributions were the interstitials, or “blurbs,” as we referred to them to in the production process. These short pieces provided an audiovisual transition between the featured works, often reflecting the theme of the episode. Part of the inspiration drew from the concept of a commercial; but rather than selling a product, the blurb provided an artistic moment for reflection. We thank Whose Family for providing the music for the blurbs.









*Coffee Cup**Dismantle**Haven**Winskill**Crisp**Puppet*

# Whose Family

The symbiotic relationship between sound and image was critical for OffLine. The interviews lacked soundtracks and many contributors requested that OffLine add music or soundtracks to their works. OffLine's producers solved this dilemma by integrating Whose Family. Whose Family soundtracks painted the musical landscapes of many artist interviews and interstitials. More than seven hundred Whose Family songs were integrated into OffLine.





*Slip Alien Farm*





OffLine web site, 1996

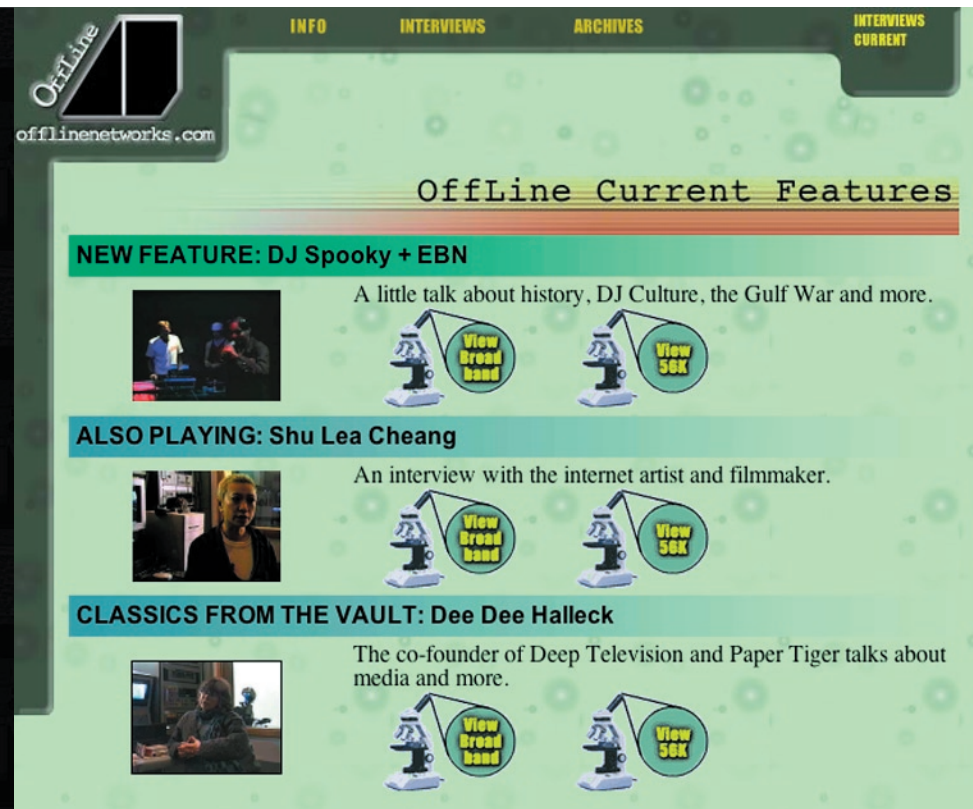


OffLine web site, 1999





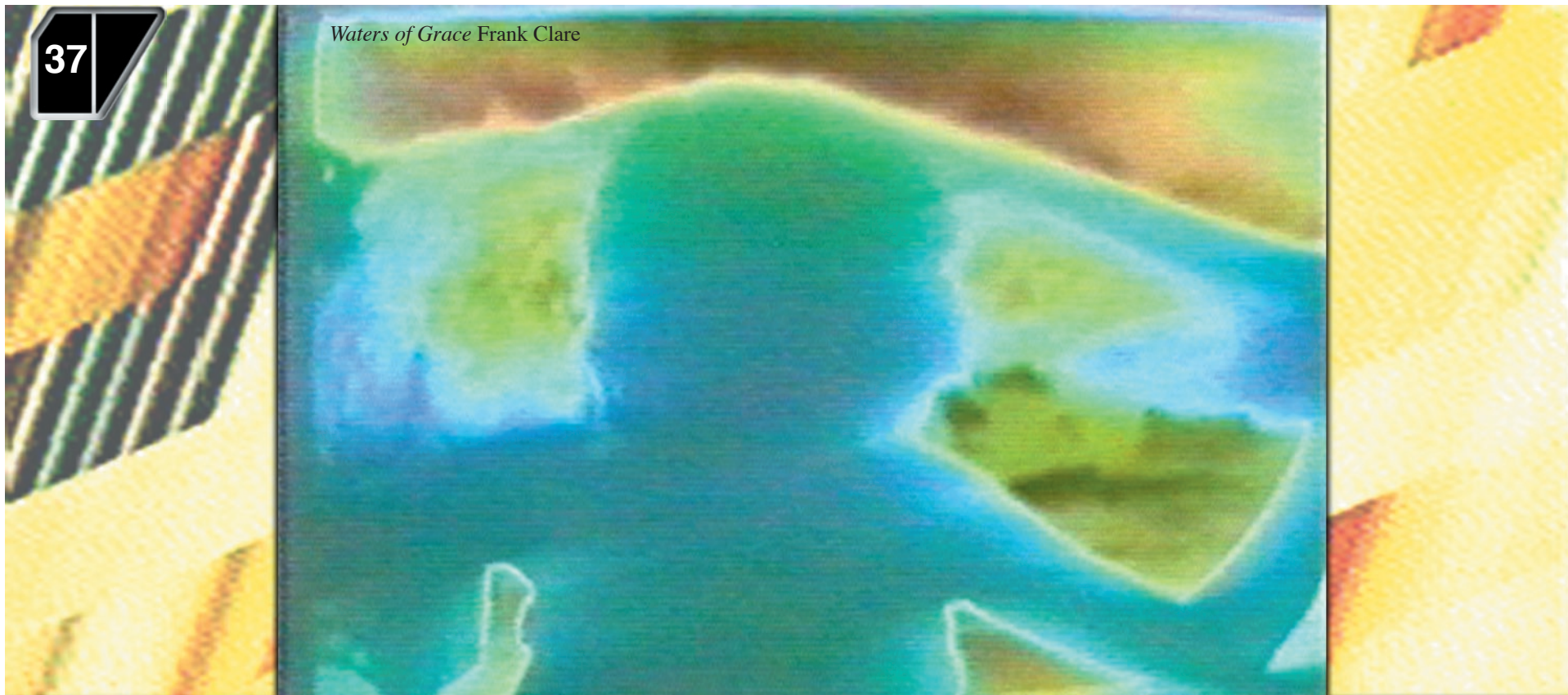
OffLine's Indieplex web site, 1999



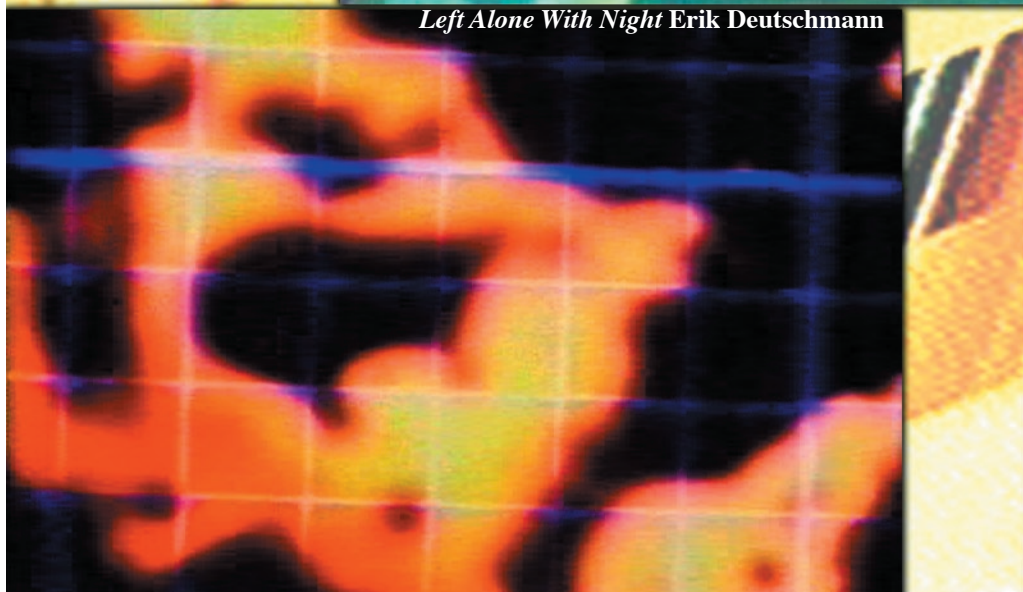
OffLine web site, 2002



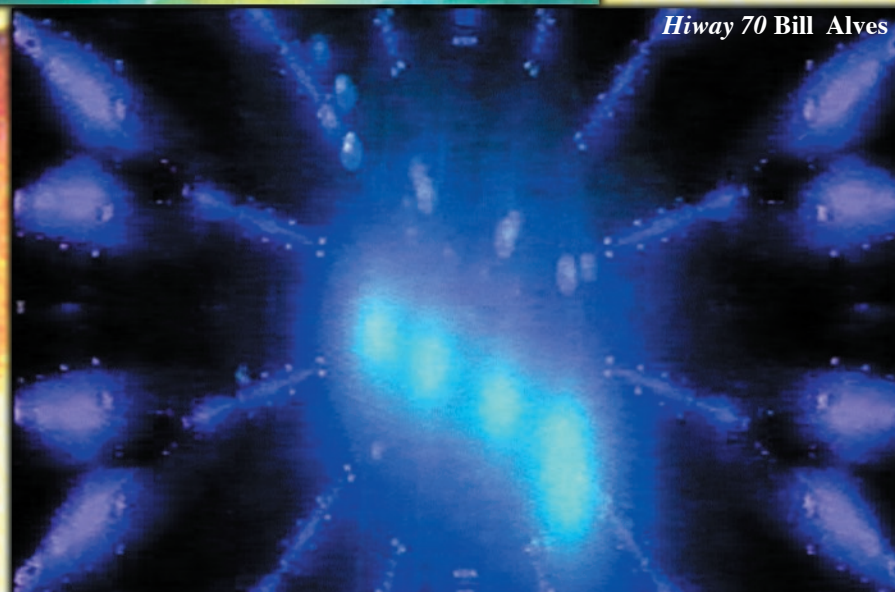
*Waters of Grace* Frank Clare



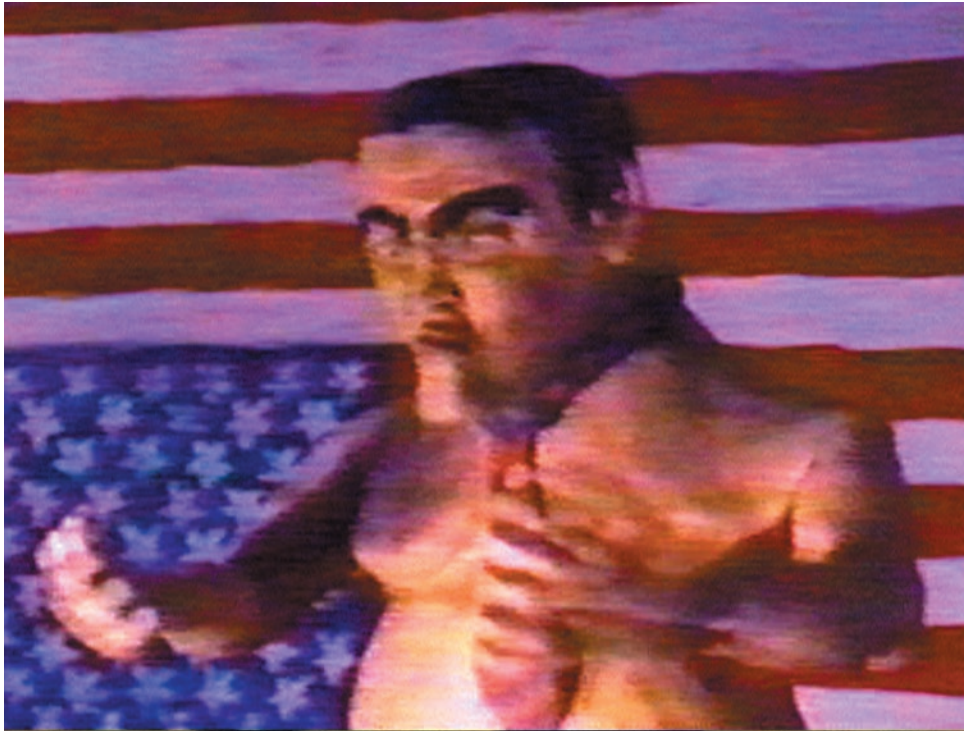
*Left Alone With Night* Erik Deutschmann



*Hiway 70* Bill Alves







*Shed Your Skin* Chad Bracken



*We Hate You Little Boy* Janene Higgins



**JUST GO OUT AND DIE.**



*Produkt* Brent Watanabe



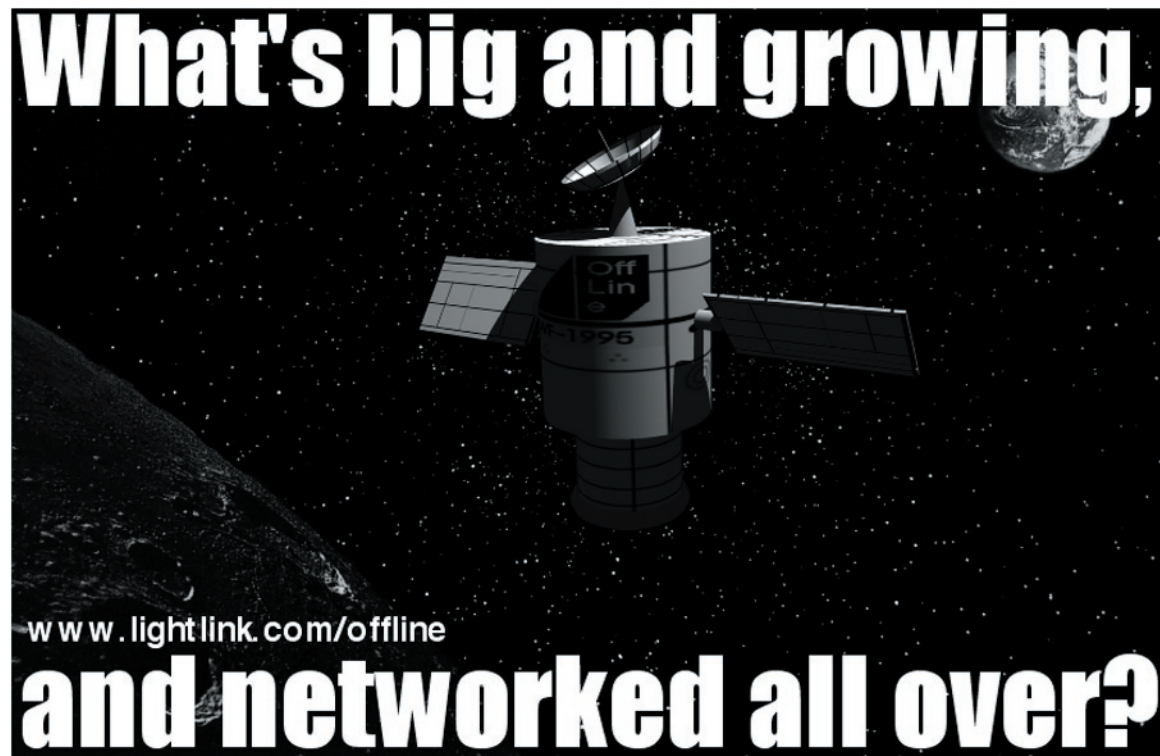


**APCO-2 2/3**

**ASEA-3/16**

**ASTEC-8**





Promotional post card, 1998

Promotional post card, 2002

OffLine could not have achieved any degree of success without the support of the many artists interviewed, film/video makers, access stations, and media organizations. From Binghamton to San Francisco, OffLine distributed its vision of independent arts and helped to create a vibrant arts community in New York State in the process. In just a few years OffLine evolved from a cable television series to a global artist internet resource.





# Our community

OffLine would like to thank the following individuals for their support, ideas, kindness, contributions, and inspiration. Without them OffLine would not have been possible.

Robin Acree  
Melanie Arnold  
Cat Ashworth  
Joel Bachar  
Joel Baird  
Frank Barnas  
Lynn Basa  
Kristen Baumlier  
Tom Bellows  
Paul Belodeau  
Julie Borkosky  
Stan Bowman  
Maryann Bowman  
Chad Bracken  
Laura Brenton  
Nancy Brown  
Brad Carr  
Andrew Christ  
Paul Congo  
Stan Cook  
Margaret Cooper  
Pia Cseri-Briones  
Jorge Cuevas  
Rob Danielson  
Gabriel Diamond  
Richard Driscoll  
Steve Dunne  
Allan Dunning  
Linda Earle

John Efroymsen  
Matthew Ehlers  
John Ewing  
Cecil Felton  
Chriss Filzen  
Elizabeth Forbes  
Eric Galatas  
Carol Goss  
Eloise Greene  
Coleen Greer  
Lucy Griggs  
Mike Hanson  
Bob Harris  
Roderick Hatfield  
Jim Haverkamp  
Richard Herskowitz  
Dan Hintz  
Rachel Hogancamp  
Cheryl Jackson  
Michele Jensen  
Mona Jimenez  
Elise Kermani  
Jamie Kravitz  
Rick Lawrence  
Graham Leggat  
Jamie Litty  
Joey Manley  
John Masters  
Job Matusow

George McCullough  
Claude Meyer  
Branda Miller  
Liz Miller  
Sherry Miller Hocking  
Paul Molina  
Lisa Murray Greenly  
Richard Nadon  
Tracy Navratil  
Chon Noriega  
Sean Nowland  
Reed O'Beirne  
Maciej Ochman  
Doreen Ortiz  
Shane P. Rodrigues  
Jorge Perez  
Don Pollock  
Alex Quinn  
Theodore Radford  
Stuart Rasmussen  
Kevin Reynolds  
Guy Rittel  
Marilyn Rivchin  
Debbie Rudman  
Kevin Saisi  
Jerry Salata  
Robin Schwartz  
Debbie Silverfine  
Mary Smith

Frank Soler  
Brian Springer  
Lauren Stefanelli  
Jim Sullivan  
Denise Tanguay  
Elana Trident  
Leslie Tullio  
Toni Urbano  
Nici Voss  
Kate Walsh  
Ray Watters  
James Wehrheim  
Eric Winter  
Eric Zipf



# Our community

OffLine also would like to thank the following organizations for their support.

Access Monterey Peninsula, Monterey, CA  
Access Tucson, Tucson AZ  
Adelphia Cable Communications  
Alliance For Community Media  
Alliance Of New York State Arts Councils  
Articulated Spectation  
Artists' Television Access  
Ashland University, Ashland OH  
Association of Independent Video and Filmmakers  
ATV, Aspen CO  
CATV, Bismarck ND  
CATV, Boulder CO  
Cornell Cinema  
DCTV, Washington DC  
Deep Dish TV  
Derry Cable Television, Derry NH  
Double Helix Community Television, St. Louis MO  
DUTV, Drexel University, Philadelphia PA  
Experimental Television Center  
Film Arts Foundation  
Finger Lakes Television, Canandaigua NY  
Free Speech TV  
Herbert F. Johnson Museum of Art  
Integrated Electronic Arts at Rensselaer  
Ithaca College Television  
KDOL "Indie Hour," Oakland CA  
Latino Studies Program, Cornell University  
LMCTV, Mamaroneck NY

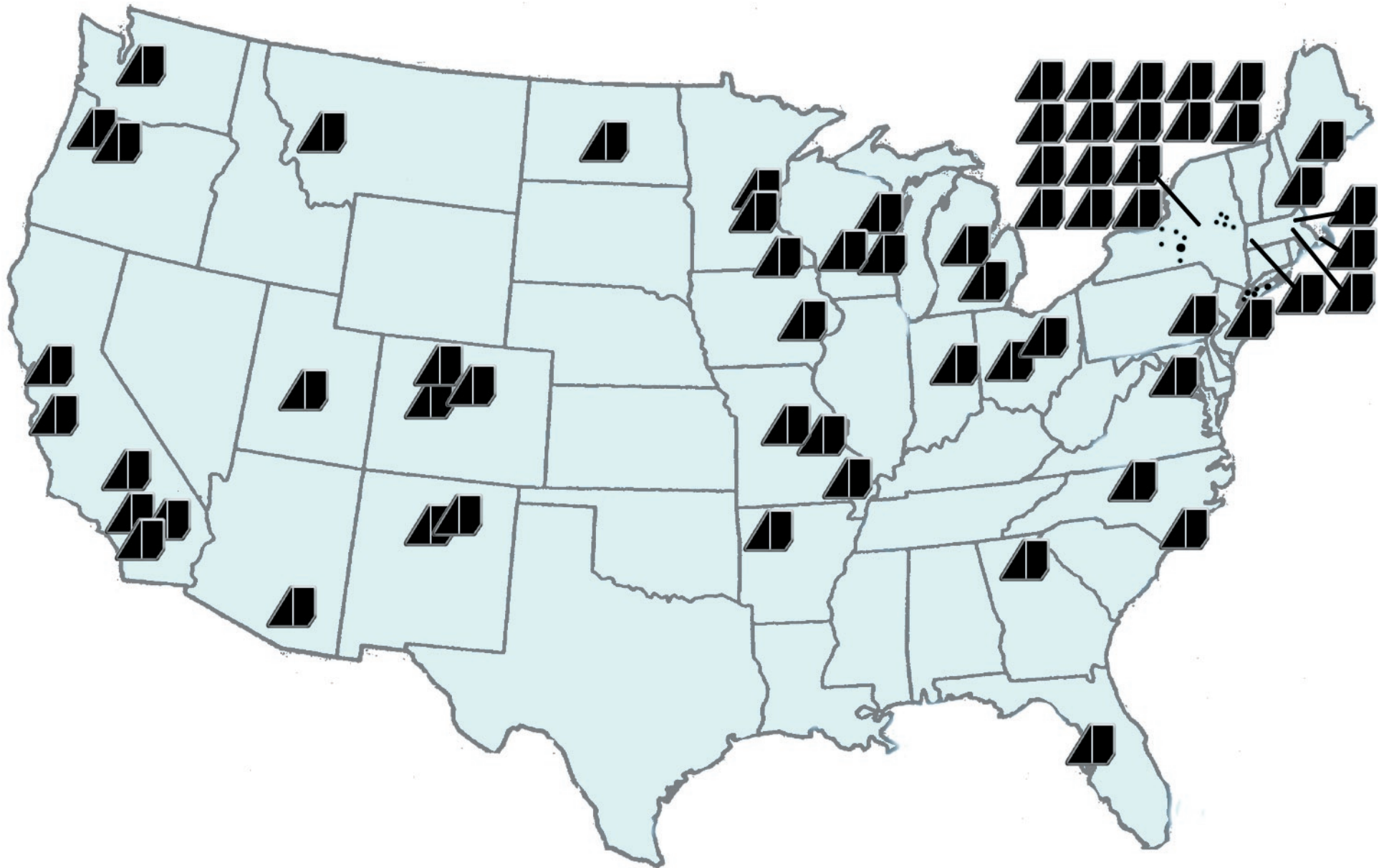
Lowell Telecommunications Corporation, Lowell MA  
LVTN-3, Laverne MO  
Maine Community Television, Dixfield ME  
Manhattan Neighborhood Network, New York NY  
MATA, Milwaukee WI  
Media Alliance  
Media Ithaca  
Mex-TV, Mexico MO  
Minneapolis Telecommunications Network, Minneapolis MN  
Mission Viejo Television, Mission Viejo CA  
MMTV, Melrose MA  
Multnomah Community Television, Gresham OR  
National Alliance for Media Arts and Culture  
National Endowment for the Arts  
New York Foundation for the Arts  
New York State Cable Commission  
New York State Council On The Arts  
NYUTV, New York University, New York NY  
Oshkosh Community Access Television, Oshkosh WI  
PATV, Iowa City IA  
PCA-TV, Portland OR  
PEG Access TV 6, Santa Fe NM  
PEGASYS Access Television Studio, Ithaca NY  
Pittsfield Community Television, Pittsfield MA  
PVTN, Perryville MO  
Rensselaer Cablevision, Rensselaer NY  
Rochester Community TV, Rochester NY  
SCAT-TV, Glenwood UT

Schenectady Community Access TV, Schenectady NY  
Spring Creek TV, Brooklyn NY  
Squeaky Wheel  
St. Paul Neighborhood Network, St. Paul MN  
Suburban Community Channels, White Bear Lake MN  
TCI Media Services, Athens GA  
The Arts Channel, Tampa FL  
The Education Channel, Tampa FL  
The Stockton Channel, Pomona NJ  
Time Warner Cable, Binghamton NY  
Time Warner Cable, Cortland NY  
Tompkins County Public Library  
Troy Newchannels, Troy NY  
Troy Public Broadcasting, Troy OH  
UNCW-Television, Wilmington NC  
Vail Valley Community Television, Vail CO  
Video Out Distribution  
Visual Studies Workshop  
VSU-TV, Valdosta GA  
West Hollywood Public Access, West Hollywood CA  
Windham Community TV, Windham NH  
Winthrop Community Access Television, Winthrop MA  
WRPI, Troy, NY  
911 Media Arts Center



# Appendix I: Distribution Map

43





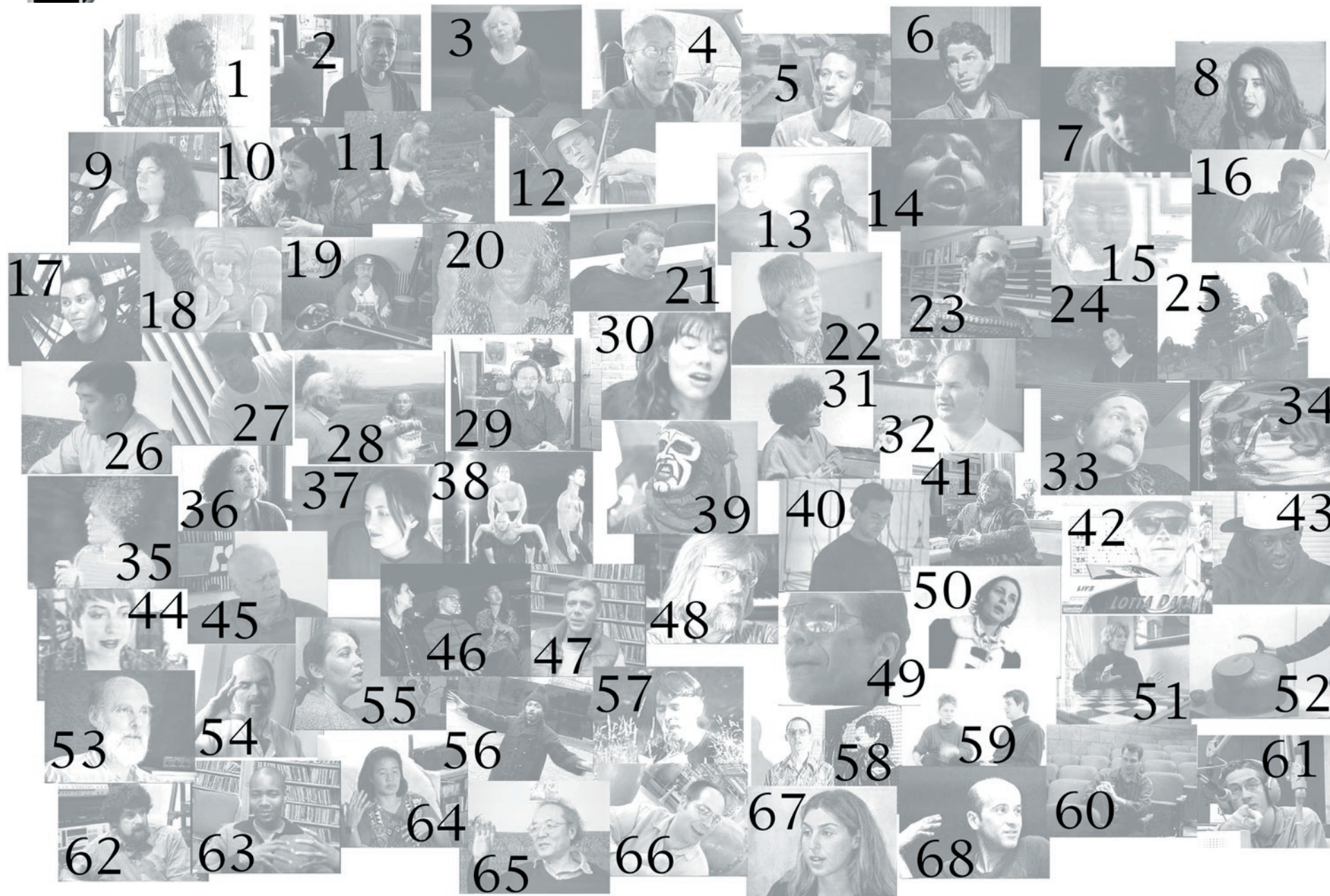
# Appendix I: Distribution List

AR	Fayetteville, AR	UATV	NC	Wilmington, NC	UNCW-Television
AZ	Tucson, AZ	Access Tucson	ND	Bismarck, ND	CATV
CA	LaVerne, CA	LaVerne Community TV	NH	Derry, NH	Derry Cable Television
CA	Mission Viejo, CA	MVT	NJ	Pomona, NJ	The Stockton Channel
CA	Monterey, CA	Access Monterey Peninsula	NM	Albuquerque, NM	CC27
CA	Ridgecrest, CA	Ridgecrest Community TV	NM	Santa Fe, NM	PEG Access TV 6
CA	San Francisco, CA	SFCTC	NY	Albany, NY	Time Warner
CA	West Hollywood, CA	W.H. Public Access	NY	Binghamton, NY	Time Warner
CO	Aspen, CO	ATV	NY	Brooklyn, NY	Spring Creek TV
CO	Boulder, CO	Boulder Public Access	NY	Canandaigua NY	Finger Lakes Television
CO	Vail, CO	Vail Valley Community TV	NY	Cortland, NY	Time Warner
DC	Washington D.C.	DCTV	NY	Ithaca, NY	PEGASYS
FL	Tampa, FL	TEC	NY	Mamaroneck, NY	MLTV
GA	Athens, GA	ONtv	NY	New York, NY	NYU-TV
IA	Iowa City, IA	PATV	NY	Queens, NY	QPTV
IN	Muncie, IN	Adelphia Cable	NY	Rensselaer, NY	Time Warner
MA	Cape Cod, MA	CCCTV	NY	Rochester, NY	RCTV
MA	Lowell, MA	LTC	NY	Saratoga Springs, NY	Time Warner
MA	Pittsfield, MA	Pittsfield Community Television	NY	Schenectady, NY	Schenectady Public Access
MA	Winthrop, MA	Winthrop CAT	NY	Staten Island, NY	SICTV
ME	Portland, ME	MCT	NY	Syracuse, NY	Adelphia Cable
MI	Ann Arbor, MI	Ann Arbor Public Access	NY	Troy, NY	Time Warner
MI	Midland, MI	MCTV	OH	Ashland, OH	Ashland University
MN	Minneapolis, MN	MTN	OH	Troy, OH	Troy Public Broadcasting
MN	Spring Valley, MN	King 11	OR	Gresham, OR	MCTV
MN	White Bear Lake, MN	SCC	OR	Portland, OR	PCA
MO	Mexico, MO	Mex TV	PA	Philadelphia, PA	DUTV
MO	Perryville, MO	PVTV	UT	Glenwood, UT	SCAT-TV
MO	St. Louis, MO	Double Helix TV	WA	Seattle, WA	TCI
MT	Missoula, MT	MCAT	WI	Madison, WI	WYOU Community TV
NC	Greensboro, NC	GCTV	WI	Milwaukee, WI	MATA
			WI	Oshkosh, WI	Oshkosh Public Access



## Appendix II: Artists interviewed

See page 30 for full detail image





## Appendix II: Artists interviewed

- |                         |                               |                               |
|-------------------------|-------------------------------|-------------------------------|
| 1. Rimer Cardillo       | 24. Joel Baird                | 47. Gardner Post              |
| 2. Shu Lea Cheang       | 25. Umo                       | 48. David Borden              |
| 3. Thelma Schoonmaker   | 26. Mark Chung                | 49. Raphael Montañez Ortiz    |
| 4. Chip Lord            | 27. Joel Bachar               | 50. Kelly Kempe               |
| 5. Lewis Klahr          | 28. Dorothy & Robert Riester  | 51. Francesca Sundsten        |
| 6. Jeff Burnett         | 29. Richard Thompson          | 52. Gail Scott White          |
| 7. Craig Baldwin        | 30. Greta Snider              | 53. Stan Bowman               |
| 8. Hillary Joyce        | 31. Maria Brito               | 54. Fernando Llosa            |
| 9. Lynn Basa            | 32. Dan Wolf                  | 55. Tall                      |
| 10. Amalia Mesa-Bains   | 33. Krzysztof Wodiczko        | 56. Daniel J. Martinez        |
| 11. Artis the Spoonman  | 34. M.R. Petit                | 57. Michael DiMilo            |
| 12. Hank Roberts        | 35. Tom Williams              | 58. Erik Deutschmann          |
| 13. Alien Farm          | 36. Celia Muñoz               | 59. Troika Ranch              |
| 14. Carmelita Tropicana | 37. Yoko Ott                  | 60. Tim McCann                |
| 15. Hungry Ghost        | 38. Second Hand Dance Company | 61. Mark Hosler               |
| 16. William Azaroff     | 39. Malachi                   | 62. Peter Rothbart            |
| 17. Gronk               | 40. Josh Owen                 | 63. Paul Miller aka DJ Spooky |
| 18. Debra Roth          | 41. Dee Dee Halleck           | 64. Rii Kanzaki               |
| 19. Tom Ross            | 42. Kirk-o-Matic              | 65. Taka Iimura               |
| 20. Carolee Schneeman   | 43. Flava Flav                | 66. Frank Harlan              |
| 21. Philip Glass        | 44. Mary Flanagan             | 67. Pier DiCarlo              |
| 22. Steina Vasulka      | 45. George Rhoads             | 68. Ronald Gonzalez           |
| 23. Mamoun Sakkal       | 46. The Poool                 |                               |



# Appendix III: Episodes

## Volume 1: Fall 1993

47

Episode	Title	Artist	Episode	Title	Artist
1 – Welcome To OffLine	Generation X Trip To The Dentist Sivad Lung Train Viva Las Vegas Convention Cut-Up Josh Owen feature Trinity	Bill Davis Mary Flanagan Tom Williams Mary Flanagan Bill Davis Greg Bowman OffLine George Kuchar		Time to Register with Uncle Sam Evidence of Ghosts	Andrew Pogson Erin Obodiac
2 – Computers	Back Mask What Became of the Monk? Stan Bowman feature Four Eyes Four Eyes 3D Clouds Water Man The Inferno: Canto I Phantasie At Minds Edge	Alien Farm Tom Ross OffLine Tom Ross Tom Ross Tim Swope Tom Ross Peter Greenaway Scott Hopper	5 – Eco	Nightflower North Shore, Oahu Second Hand Dance Company feature Flora Isleton Parking Lot Land/Architecture/Body	Whose Family Bob Harris OffLine Rii Kanzaki George Kuchar Greg Bowman Elissa Ico
3 – Nonsense	Space Man Michael DiMilo feature Pictures of Fido Skull Dance Heads Sorry Doggie Daze The Deafening Goo Godzilla Hey  Fruit Random Guns 'R U.S.	Paul Smith OffLine Michael DiMilo Tom Ross Nathan MacFayden Craig Mains Tom Ross George Kuchar Megan Roberts/ Ray Ghirardo Jean Claude Greg Bowman Greg Bowman	6 – On The Road	Union Center Inheritance Alien Farm feature SKOK I'm Talkin' To You New York Mixes The Inferno: Canto III	Mary Flanagan OffLine Whose Family Ilonna Pinion Paul Belodeau Peter Greenaway
4 – Ghosts	Innards Stream of Unconsciousness Deixis Spider Dance Simulation Malachi feature Ulao The Inferno: Canto II	Mary Flanagan Greg Bowman Alien Farm Paul Belodeau Whose Family OffLine John Reimer Peter Greenaway	7 – The Dark Side	War Tax Plata Royale Tom Williams feature Threshold 2 Generation 13 Containment	Greg Bowman Aaron Sternlicht OffLine Elissa Ico AmyLisewski Whose Family
			8 – Music	Love Dance of the Gypsy Woman Keep On Movin' David Borden feature Give Me My Diploma Nuclear Crap untitled The Inferno: Canto IV	Tom Williams Amy Rosenberg OffLine Greg Bowman Jorge Cuevas Peter Nesbitt Peter Greenaway
			9 – Winter	High Frequency Vibration Double Negative Ice LandArchitecture/Body Black Determination: Crisis At Cornell A Very Short Flick Starring Joe The Impaler Red Squad	Tom Williams Paul Smith Whose Family Elissa Ico Ralo Diamant Don MacDonald Alien Farrn



# Appendix III: Episodes

## Volume 2: Spring 1994

Episode	Title	Artist	Episode	Title	Artist
10 – Revelaciones		OffLine	15 – Maps	T.G.: Psychic Rally in Heaven	Derek Jarman
11 – Fauna	Breach Baby	Mary Flanagan		Hungry Ghost feature	OffLine
	She Said	Lynette Kessler		Home Is Where the Heart Is (part 2)	Sian Evans
	Tom Ross feature	OffLine		Threshold	Elissa Icso
	Jabberwocky	Tom Ross		To Top It Off	Leonraymond Mitchell
	Pod	Ben Weinstein	16 – Abstractions	Enchantments	Eliot Sirota
	Family Jewelfish	Mary Flanagan		This, That, & the Other...	Tari Abranovich
12 – Graffiti	Dismantle	Whose Family		Holding the Lens (part 2)	Lawrence Sullivan
	Heart Core	Penny Poor		Carolee Schneemann feature	OffLine
	Rii Kanzaki feature	OffLine		Studio Xee	Marchette Dubois
	Holding the Lens (part 1)	Lawrence Sullivan		A Search for Center	Kirk-o-Matic
	Marianne Faithful videos	Derek Jarman	17 – Women	Little Women	Jennifer Hoffercker
	Be All You Can Be	Ben Weinstein		Crisp	Whose Family
13 – Kitchenware	Kokeyed Solitude	Elena Dubrovsky		Hillary Joyce	OffLine
	Kitchen	Marchette Dubois		The Power of Men	Amy Lisewski
	Greta Snider feature	OffLine		Mel's Shoot	Joy Parker
	Coffee Cup	Whose Family	18 – Subversions	Tear-Jerker	Joel Baird
	Video Underground Excerpts	Paul Belodeau		Living on the Moon	Joel Baird
	A Few Protests and a Parade	Russ and Taly Johnson		La Blanchisseuse	Rohesia Hamilton Metcalfe
14 – Cities	Home Is Where the Heart Is (part 1)	Sian Evans		Subliminal Proprierty	Craig Mains
	Bus Ride	Elite Kedan		Pirate Tape	Derek Jarman
	Mary Flanagan feature	OffLine		The Evil Cleric	Joel Baird
	Manhatta	Paul Strand/ Charles Sheeler		Inversion Traps in Los Angeles	Heather Kerr
	Camping	R.T. Marcy			



# Appendix III: Episodes

## Volume 3: Fall 1994

Episode	Title	Artist	Episode	Title	Artist
19 – Masks	With the Good Witch Ego Diminutive Experiment #1 12/19/93 Richard Thompson feature Phenomena of Materialisation Do Asteroid	Joel Baird Erik Deutschmann Steve Witt OffLine C. Clerc/K. Coyne Andrew Fort Whose Family	23 – Bridges	Can't Get Out of the Ghetto amBUSHed Conflicting Signals Peter Rothbart feature An Abbreviated Catalog of the Achievements...	Justin F. Nathanson Jared Katsiane Deborah Orloff OffLine Andrew Fort Chuck Furoy
20 – Languages	Seven Days in 1994 Color Slivers Carmelita Tropicana feature Glyphs Mirror Man	Kristin Tripp Maureen Nappi OffLine Robert Renfrow Andres Tapia-Urzu	24 – Family	Mysogyny  She Went Back My Imaginary Irish Grandmother Missing Linck Hank Roberts feature The Hope Chest Post Partum Letter	Mary Flanagan Joel Baird Erin Crysdale OffLine Sandy Dyas Ju Pong Lin
21 – Carpe Diem	Miracle Euphaedra Art Park feature Early Winter The Moment  Skateboards	Joel Baird Erik Deutschman OffLine Sandy Dyas Amy Brown/ Leo O'Sullivan Paul Belodeau	25 – Flight	Euphobia Processional Erik Deutschman feature Adrift Mr. & Butterfly Storybook (Blow-Pops) Winskill	Tad Roebuck Maureen Nappi OffLine Erik Deutschmann Hsieh/Severtson Steve Witt Whose Family
22 – Patterns	Left Alone With Night Persistence Faulty Technology Photon Discharge Dan Wolf feature Salient Evincement Library JFX	Erik Deutschmann Maureen Nappi Eliot Sirota Greg Bowman OffLine Anthony Stephenson Marchette Dubois Kirk-o-Matic	26 – Structures	TV Dinner/Carhenge History Januray '91: A Video Diary Dream Girl Ratta Tat Tat The Punishment	Kirk-o-Matic Joel Baird Helga Weiss Kelly Murray Joel Baird Marcelle Pécot
			27 – Boundaries	The Joy Ride Five Spot Elemental Abstractions Nove Hranice Coilvalve	Kirk-O-Matic Jeff Dark Maureen Nappi Jenny Perlin Whose Family



# Appendix III: Episodes

## Volume 4: Fall 1995

Episode	Title	Artist	Episode	Title	Artist
28 – Machines	Cityshore Goddess and Machine George Rhoads feature Dream Nuts & Bolts Colorganic Continuum Nick Slick, Cheap Peeks,	Ronaldo Kiel/Anita Cheng Anne Farrell OffLine Tall Debra Roth/Pink Inc. Stephan Larson Maureen Nappi Always Moist Kirk-o-Matic	32 – Faces	Slugmation Prendle Jeff Burnett feature Dinner Welcome to Nocturnia I New Right Angle Roof Run	Stan Bowman Whose Family OffLine Danielle Katz Frank Fitzgerald Julius Vitali Joel Bachar
29 – Streets	See You Your Guilt Is Our Guilt Free Mumia Now Flavor Flav feature Suspect House of Cards Cafe Voltaire Hollywood Undercover	Tall Timothy Johnson Posr A. Posr OffLine Eitan Hakami Matthew Ehlers Julius Vitali Aileen MacCormack	33 – Stadium	Journeys Fulton St. Hungreed Steina Vasulka feature Pearl White Blue Beach	Stephan Larson Greg Bowman Ira Israel OffLine Aileen MacCormack Joel Bachar
30 – Relations	Ruby Lovers Can't Think Joel Baird feature The Good Witch Repression	Matthew Ehlers Tall OffLine Joel Baird Bill Mueller	34 – Fire	Eat Hot Death Gail Scott White feature –10 'N Cookin' NYPD 68 & Land of Never	Trav S.D. OffLine Carl Geiger/Amy Hufnagel Aileen MacCormack
31 – Dance	Point of Departure Debra Roth feature Tale of the Dog Entropy: Reverse to Omega Hey, Spirit	Timothy Johnson Offline Debra Roth/Pink Inc. Achmed Valk Gillian Barnes	35 – Seasons	Road Suite Philip Glass Dos Mexicanas Life Is Short Why Die?	Stan Bowman OffLine Sam Mithani/Denise Lugo Kirk-o-Matic Aileen MacCormack
			36 – Colors	Impasse At The Corner of Error and Perfection Welcome to Nocturnia II Bottled Words	Joel Bachar Julius Vitali Frank Fitzgerald Bill Millios



# Appendix III: Episodes

## Volume 5: Fall 1996

51

Episode	Title	Artist	Episode	Title	Artist
37 – Portals	Hiero Matrix Romp Hairless Mark Chung interview Black and White Van Gogh's Ear	Manfred Smollich Janene Higgins OffLine Blackchair Productions Wen-Chung Wu	42 – Water	Water Trout Wish Waters of Grace Tall feature Forgetting We Are Water	Kelly Murray Whose Family Frank Clare OffLine Lynn Shelton
38 – Birds	Orange Julia Desecration Change To the Other Side Tim McCann interview We're Pastie to be Grill You Same Old Song and Dance Dimache. 1er. Regina. Le Vent	Tom Ross Dante Tomaselli Lisa Karp OffLine Rachel Roth Sandy Dyas Marie-Helene Cousineau	43 – Rebirth	Shed Your Skin Ishtar  Sacrifice She Slept but a Few Hours Ronald Gonzalez's Incantations Peas 'n Corn Rebirth of Larry Goodnight Irene	Chad Bracken Scott Noegel/ Greg Bowman Leslie Streit Sandy Dyas OffLine Tag Purvis Helden Sun Gretchen Miller-Stephan
39 – Humor	Stop Pickin' at His Bones Oh Shit That's My Mind Death and A Salesman Kirk-o-Matic feature 9 Brief Pieces Field Sequence	PWB Matt Wilkins Joe Grisaffi OffLine Russ and Taly Johnson Nancy Ghertner			
40 – Boxes	Boxes Shadow Boxes Mamoun Sakkal feature Little Cube Fur Film	George Nadeau Barbara Rosenthal OffLine Jason Simmons Alak Films			
41 – Insects	To See or Not to See From the Journal of a Fly Thelma Schoonmaker feature The Chameleon Ignorance is Bliss Don't Deal Dirt Conjugations	Terese Svoboda Tom Ross OffLine Charles Wilson unnamed Alak Films Elouise Oyzon			



# Appendix III: Episodes

## Volume 6: Spring 1997

Episode	Title	Artist	Episode	Title	Artist
44 – Orbit	Peek-a-Boo Satellite Sacred Spaces Wish Dream from Darkness to Light Craig Baldwin feature Monolith	Eun-Ha Paek Whose Family Charles Henry Rossana Jeran James Lee Byrd OffLine Blackchair Productions	48 – Yesterday	Tales from the Lower East Side His Neighbor's Cat Coming Down	Alak Films Hugh Morris John Altman
45 – Strangers	Jack and Jill Planet in my Pocket Strangeness in the Night Stranger Voices	David Hodes Beverly Seckinger Ted Pratt Max Grimm	49 – Ships	Haven Joel Bachar feature Train Suite Sweet 'n Sour Ghostpainter	Whose Family OffLine Stan Bowman Tag Purvis John DeVault
46 – Games	Instinct A Lad and His Game 4 Point Breakdown Bingo Inferno Ball Machine 1 Watch Out for Invisible Ghosts I Spray Perfume Hysteria Fractal	Manfred Smollich Clement Lachance Michael Schuman David Russell John Schwartz Kristin Lucas Lisa Goldring John Schwartz	50 – Razor	Thumbtack The Fair Dee Dee Halleck feature Long Into the Night...	Whose Family Jackie Pardon OffLine Reynold Weidenaar
47 – Communications	Cable Xcess Mnemonia Teletouch Drive Messengers Shu Lea Cheang feature Translate {} Expression Road Suite 2	Kristin Lucas Joseph Cafferelli Rodney Evans Leslie Streit OffLine Tina LaPorta Stan Bowman			



# Appendix III: Episodes

## Volume 7: Fall 1997

Episode	Title	Artist	Episode	Title	Artist
51 – Subways	Token City	Muriel Magenta/ Michael Udow	55 – Extremes	Synagogues on Fire	Jeremy Newman
	Watch the Closing Doors	Joseph Spaid		Artist Books	Rick Iacovelli
	Umo feature	OffLine		Is Essential	Peter Freund
	Fish Out of Water	Tall		Queen of the Mist	Rohesia Hamilton Metcalfe
	Keep Moving	Rohesia Hamilton Metcalfe		Art for Our Sake	Moirra Lauten
	What You Thoughtlessly Discount	Peter Freund	56 – Smoke		
	Cyber Hippies	Su Rynard		Something To Do With the Weather	Joel Baird/ Rick Phillips
52 – Ambience				Lucy	Christopher Wasmer
	Bombardment	Sam Rosenthal		Artis the Spoonman feature	OffLine
	OIC Select Videos	Joel Baird/Rick Phillips		Reefer Madness '93	Kenneth Thomas
	Denise Pelletier exhibit	OffLine		Marihuana Pagoda	Reagan Revolution/ Reed O'Beirne
	Caserole	Brian Moonan	57 – Caverns		
	Empty	Jason Seudath		I Remember	Russ and Taly Johnson
	Form & Movement	Moirra Lauten		Awake Marilyn	Stephanie Vittas
53 – Parents				Someone to Love	Shawn Goldberg
	M(other)	Rossana Jeran		Megan Roberts/Ray Ghirardo exhibit	OffLine
	The Settlement	David Hodes		Freds, Fish, Fresh Air	Russ and Taly Johnson
	An Idea of Mother	Marisa Vitiello		38 Geary	David Gebroe
	Baby Killer	James Shepard			
	Back Roof	Sue Wrbican			
54 – Mutations					
	Blue Gene Baby	Christine Robertson			
	8 Men Called Eugene	Su Rynard			
	Edward Mayer exhibit	OffLine			
	Malachi	Blackchair Productions			
	in Vivo	Robert Wyrod			
	October	Brian Moonan			
	Escarpment	Kirk-o-Matic			



# Appendix III: Episodes

## Volume 8: Spring 1998

Episode	Title	Artist	Episode	Title	Artist
58 – Frames	Emergence Swan's Painting The Chain Circle Lewis Klahr feature Corridor Boobs in Toyland Empty Hand Jive Fences	Michael Shuman Anne Farrell Manfred Smollich OffLine Mary Hazelwood Jeff Rappaport Michael Trainor Tom Ross George Elyjiw		Chip Lord feature The Lost World Rolling Blunder Allergy for Life	OffLine Kenneth Thomas John Yung Reed O'Beirne
59 – Dates	Liberty Beast part 1 Deadman's Cliff Part Two The Michelson-Morley Experiment  Screen Sure Thing Anklebrace	Lev Fae Yamaguchi Robert Jaye Sam Rosenthal Allan Heifetz Andy Gose Whose Family	63 – At the Movies	FBI Warning Don't Forget to Die on the Way Out  William Azaroff feature Checkmating Peck Peck Facial Experiment Album The Final Cut	Lisa DeLillo P. Milspaugh/A. Margolis OffLine William Azaroff Whose Family Allan Heifetz Serge Gregory Dan Trezise
60 – Drowning	Beneath the Surface Trempen Pier DiCarlo feature The Drowning Man Liberty Beast part 2	John Yung Tall OffLine Christopher Barbur Lev	64 – Spirits	Free Dancing with the Virtual Dervish Fernando Llosa feature feature Illuminations Suite II Sisyphus and the Scientists Toilet	Rich Sullivan Diane Gromala OffLine Don Slepian Lisa DeLillo Keith Cole
61 – Cocktails	William Shatner Lent Me  Balloon I Am TV Vampire Condom Smooch Martini Liberty Beast part 3 Mauro: About Love	His Hairpiece Ken Hegan Robert Jaye Allan Heifetz Manasseh Productions Jeff Frederick Robert Jaye Lev Laureen Clair/SOL	65 – Travel	Dom Tourist Landscape.001 Going Dutch Japan Made Simple Temple Doors to Hong Kong Buni	Manfred Smollich Rich Sullivan Rich Sullivan Michael Shuman Susan McNally Pretty Mary Sunshine Rozalinda Borcila
62 – Cars	HIWAY 70 The Trilogy	Bill Alves Cheever/Phillips	66 – Experiments	Puppet The Horse Farm Dialogues of Early Sound Film The Probe Tape The Floor Was Hard But Home My Nature Is To The Ground	Whose Family Fae Yamaguchi Terry Cuddy Doug Lane Sam Rosenthal Dennis Summers

# Appendix III: Episodes

## Volume 9: Fall 1999

55

Episode	Title	Artist	Episode	Title	Artist
67 – Synthesis	Adrenaline (r)emerge Beach M.R. Petit feature 5 Part Inventions All Or Nothing	Matthew Scott Stephan Iarson Mark O'Connell OffLine Stan Bowman Tim Clague	72 – Situations	The Fulle Del Monte Bird's Wing If You Need Oil Pitcures in Ireland The Succubus	Andy Collen Joel Baird Dave Gebroe Dave Johnston Denise Wellenstein
68 – Business	Capitalism Sucks Produkt Detour Krystof Wodiczko feature Horn Chase Bringing It To You	Mark O'Connell Brent Watanabe Greg Bowman OffLine Whose Family ®TMark	73 – Out and Beyond	Trans I've Got a Problem O/C Dry Open Air Stain Laetita M Tabernacle Once Upon a Time We Hate You Little Boy	Shawn Chappelle Joel Baird Andrew Power Terry Steyn Rae Staeseson Sandra Stevenson Tony Gault Joel Baird Janene Higgins
69 – Feedback	N.O.D. Dinitrophenol Swing Bridge The Poool feature Subnautica Love Street Crosstalk	Keith Knudson OffLine Reynold Weidenaar OffLine The Poool Mark O'Connell Greg Bowman			
70 – Addictions	Writing in the Dark Kelly Kempe feature The Gift Touch The Virtuous Woman Praxis	Joseph Cafferelli OffLine Tony Gault Joe Pelletier Riho Katagiri M.M. Nihalsingha			
71 – Culture Jam	What to do Before the Movie Starts X Minutes of Original Programming Culture SPF 2000 Grapes: A Love Story She Was Good	Mike McCool Doug Henry Chris Uren Patrick McGuinn Jesse Spencer Michael Trainor			



# Appendix III: Episodes

## Volume 10: Fall 2000

Episode	Title	Artist	Episode	Title	Artist
74 – History	William Bill Jefferson Clinton DJ Spooky interview Silent Voices Gilgamesh The Cowboy and the Ballerina	Taly & Russ Johnson OffLine Taly & Russ Johnson Scott Noegel Mark Isham	78 – Reality	Civil Twilight The Day Jesus Melted Francesca Sundsten interview Transition Naked Reality Money Changes Everything	John Harrigan Su Rynard OffLine Wendy Smith Trent Harris Denise Wellenstein
75 – Time	Two Minutes on a Subway Train 7 Minutes to Live My Life Yoko Ott interview Prey Solomon's Nightmare El Compromis	Paul Catanese Dider Oustrie OffLine Chris DeBoer C.F. Shelton Amanda DeLuis	79 – The Gallery	Museum of Shuttered Exhibits Static Cling Troika Ranch interview Interior Latex Portrait of Lloyd	Bill Gibson Bill Alves OffLine Matt Wilkins Lisa Shannon
76 – Punk	Ugly Actual Life: Tatoo ABC Living Room Frank Harlan interview No Joy in Pudville Andre the Giant Has a Posse Buni #8 Actual Life: Peter Berg	Nick Kunin David McLane Brent Watanabe OffLine Nick Kunin Helen Stickler Rozalinda Borcila David McLane	80 – Roll Credits	Organ Cranker Rock 'n Roll Frankenstein The Taste of a Generation Love-a-Thon Ronnie, Pinkie & Pepperpot Eyewitness Palite	Jon Foulk Brian O'Hara Alan Schechner Brown Cuts Neighbors Brown Cuts Neighbors Leslie Streit Whose Family
77 – Speaking Of	When People Say: Saving the World Solo  Taka Iimura interview Two Nights Akia Mer Mare Mere The Angel Under My Skin	Pamela Sackett OffLine Brent Watanabe Anne Farrell Hannah Beadman C.F. Shelton Taryn Fitzgerald			





